

Master Thesis Topic: Simulating Waste Treatment for Amine-Based Carbon Capture Plants

What?

- Simulating Waste Treatment for Amine-Based Carbon Capture Plants

How?

- Utilization of ASPEN and MATLAB for simulation modelling
- Interaction and collaboration with project members from European and UK universities and institutions

Why?

- Contribution to prospective Life Cycle Assessment (pLCA) and techno-economic assessment of the HiRECORD EU Project
- Advancing sustainability and environmental responsibility.

Duration: Approximately 4 months, depending on student commitment

Task: Develop and Optimize Waste Treatment in Process Simulator

Skills: Simulation Modeling, Environmental Engineering

Programming Tools: ASPENplus, MATLAB

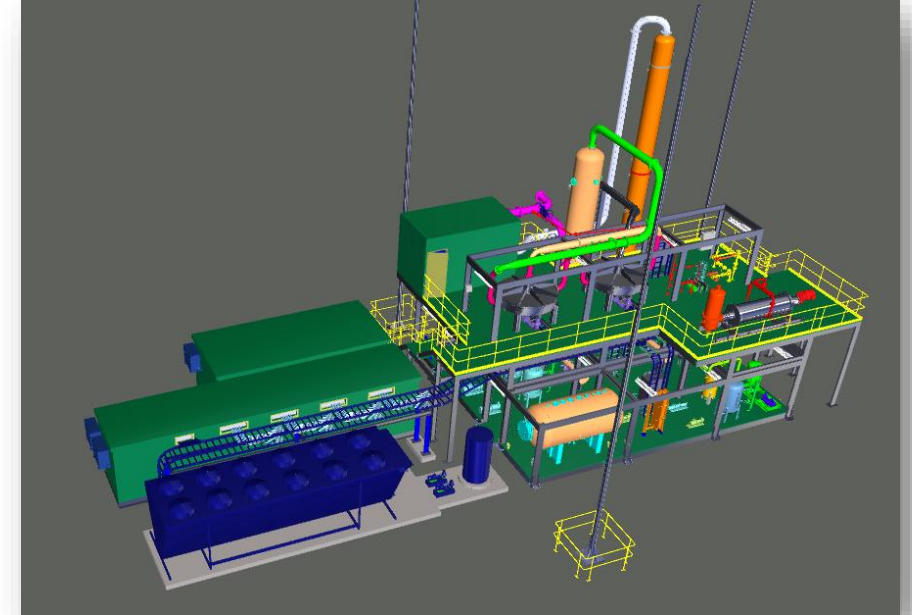


Fig. HiRECORD Project Modular Skid, by Richard Alan Engineering

