

# Recombinant *Aspergillus* $\beta$ -galactosidases as a robust glycomic and biotechnological tool

Martin Dragosits · Stefan Pflügl · Simone Kurz ·  
Ebrahim Razzazi-Fazeli · Iain B. H. Wilson ·  
Dubravko Rendic

Received: 17 June 2013 / Revised: 8 August 2013 / Accepted: 11 August 2013  
© The Author(s) 2013. This article is published with open access at Springerlink.com

**Abstract** Galactosidases are widespread enzymes that are used for manifold applications, including production of pre-biotics, biosynthesis of different transgalactosylated products, improving lactose tolerance and in various analytical approaches. The nature of these applications often require galactosidases to be present in a purified form with clearly defined properties, including precisely determined substrate specificities, low sensitivity to inhibitors, and high efficiency and stability under distinct conditions. In this study, we present the recombinant expression and purification of two previously uncharacterized  $\beta$ -galactosidases from *Aspergillus nidulans* as well as one  $\beta$ -galactosidase from *Aspergillus niger*. All enzymes were active toward *p*-nitrophenyl- $\beta$ -D-galactopyranoside as substrate and displayed similar temperature and pH optima. The purified recombinant galactosidases digested various complex substrates containing terminal galactose  $\beta$ -1,4 linked to either *N*-acetylglucosamine or fucose, such as *N*-glycans derived from bovine fibrin and *Caenorhabditis elegans*. In our comparative study of the recombinant galactosidases with the commercially available galactosidase from *Aspergillus oryzae*, all enzymes also displayed various degrees of activity toward complex

oligosaccharides containing  $\beta$ -1,3-linked terminal galactose residues. All recombinant enzymes were found to be robust in the presence of various organic solvents, temperature variations, and freeze/thaw cycles and were also tested for their ability to synthesize galactooligosaccharides. Furthermore, the use of fermentors considerably increased the yield of recombinant galactosidases. Taken together, we demonstrate that purified recombinant galactosidases from *A. niger* and from *A. nidulans* are suitable for various glycobiological and biotechnological applications.

**Keywords** *Aspergillus* · Galactosidase · Recombinant protein · *N*-glycans · Biotechnology · *Pichia pastoris*

## Introduction

$\beta$ -Galactosidases ( $\beta$ -D-galactohydrolases, EC 3.2.1.23) are ubiquitous enzymes capable of hydrolyzing terminal  $\beta$ -D-galactosyl moieties from substrates such as disaccharides, diverse glycoconjugates, and polysaccharides. They belong to the glycoside hydrolase clan A (GH-A), which encompasses, among others,  $\beta$ -galactosidase families 35 and 42. Under distinct reaction conditions,  $\beta$ -galactosidases can also catalyze transglycosylation reactions using various acceptor molecules, a capability used for the synthesis of, e.g., galactooligosaccharides (GOS) (Park and Oh 2010).  $\beta$ -Galactosidases have been widely used to hydrolyze lactose and render dairy products consumable for lactose-intolerant individuals. Further applications of these enzymes range from analytical studies (Titz et al. 2009) to glycan remodeling (Iskratsch et al. 2009) and include various processes of biotechnological and medical importance (Husain 2010).

The  $\beta$ -galactosidases in general use are mainly derived from microbial sources, which include both prokaryotic and eukaryotic organisms. They can be purified at high yields

**Electronic supplementary material** The online version of this article (doi:10.1007/s00253-013-5192-3) contains supplementary material, which is available to authorized users.

M. Dragosits · S. Kurz · I. B. H. Wilson · D. Rendic (✉)  
Department of Chemistry, University of Natural Resources and Life Sciences, Muthgasse 18, Vienna 1190, Austria  
e-mail: dubravko.rendic@boku.ac.at

S. Pflügl  
Department of Biotechnology, University of Natural Resources and Life Sciences, Vienna, Austria

E. Razzazi-Fazeli  
VetCORE Facility for Research, University of Veterinary Medicine, Vienna, Austria

directly from fungal organisms (Tanaka et al. 1975; Husain 2010; Sen et al. 2012) or produced in a recombinant form at high levels in different expression systems (Wang et al. 2009; Oliveira et al. 2011). Other commonly used sources of  $\beta$ -galactosidases include bacteria (e.g., bifidobacteria (Hung et al. 2001; Hsu et al. 2005) and *Streptococcus pneumonia* (Hughes and Jeanloz 1964)), yeasts (e.g., *Kluyveromyces lactis* (Dickson and Markin 1978)), plants (e.g., from jack bean (Arakawa et al. 1974; Li et al. 1975)), and animals (e.g., bovine testes  $\beta$ -galactosidase (Distler and Jourdan 1973)).

One of the most widely used fungal  $\beta$ -galactosidase originates from *Aspergillus oryzae*. As such, detailed data on its characteristics and many applications have been reported (Scheckermann et al. 1997; Zeleny et al. 1997; Torres et al. 2003; Vera et al. 2011). The  $\beta$ -galactosidase from *Aspergillus niger* was previously used to overcome the Lac<sup>-</sup> phenotype of *Saccharomyces cerevisiae* (Kumar et al. 1992) and its heterologous expression in various yeast hosts as well as its use in lactose hydrolysis and transgalactosylation reactions was reviewed recently (Oliveira et al. 2011). A closely related recombinant  $\beta$ -galactosidase from *A. niger* van Tiegh has been recently described as a highly acid-stable enzyme with prospective use in the treatment of lactose intolerance (Hu et al. 2010) and a purified native  $\beta$ -galactosidase from this strain possesses a rather low pH optimum (O'Connell and Walsh 2010). In 2008, two  $\beta$ -galactosidases secreted by *Aspergillus carbonarius* ATCC6276 were purified to homogeneity and were shown to be resilient to simulated gastric conditions (O'Connell and Walsh 2008). Most recently, a  $\beta$ -galactosidase was purified from *Aspergillus alliaceus* and partially characterized; this enzyme, unlike various other fungal galactosidases, has a pH optimum in the neutral range, an enzymatic property suitable for the preparation of low-lactose milk (Sen et al. 2012).

Since the *Aspergillus* spp. are obviously an established source of robust but different  $\beta$ -galactosidases, we sought to thoroughly characterize pure forms of recombinant  $\beta$ -galactosidases using various substrates and conditions. In addition, as the *A. oryzae*  $\beta$ -galactosidase only digests terminal  $\beta$ -1,3-linked galactose residues at a very slow rate (Zeleny et al. 1997), we examined whether any of the galactosidases from other *Aspergillus* spp. display higher activity toward these residues, a feature interesting for glyco-biological analyses. In this study, we report on the expression and characterization of two  $\beta$ -galactosidases from *Aspergillus nidulans* and one  $\beta$ -galactosidase from *A. niger*. We have expressed C-terminally His-tagged versions of these previously putative  $\beta$ -galactosidases in *Pichia pastoris* as an expression host and purified the recombinant enzymes to apparent homogeneity. In-depth characterization of the recombinant proteins and comparison with the commercially available, native galactosidase from *A. oryzae* were performed. Additionally, we emphasized the evaluation of the recombinant enzymes as an

analytical tool, such as for glyco-biological analyses, which is an important application of  $\beta$ -galactosidases rarely evaluated for novel enzymes. The obtained data show that these recombinant  $\beta$ -galactosidases are promising as reagents for a variety of glyco-biological and biotechnological applications.

## Materials and methods

### Cloning of sequences encoding *Aspergillus* $\beta$ -galactosidases

Open reading frames (ORF) from *A. niger* (*lacA*, gene ID 4977988) and *A. nidulans* (*lacA*, gene ID 2876531; *lacB*, gene ID 2876757) were polymerase chain reaction (PCR) amplified (Expand Polymerase) from cDNA templates (*A. niger* ATCC1015 and *A. nidulans* A713 strain (Pisanelli et al. 2010)) using the following primers: KpnI\_Aniger\_lacA\_fw (AGGTACCGCGTCCATTAAGCATCGAATCAAT), NotI\_Aniger\_lacA\_rv (AGCGGCCGCGTATGCACCCTCCGCTTCTTGTA), EcoRI\_Anidulans\_lacA\_fw (TGAA TTCGTTGCTCTTACCCACAAGCTCAAT), NotI\_Anidulans\_lacA\_rv (TGCGGCCGCATAGACACCCTTCCTAGACTGATAACG), EcoRI\_Anidulans\_lacB\_fw (AGATTCCAGAATAGTTCCCAATCCGAATG), and NotI\_Anidulans\_lacB\_rv (AGCGGCCGCTAGTTGAAGACATTCGAATATGTAGACG). RNA samples, extracted with TRIzol reagent (Invitrogen) according to the manufacturer's protocol from standard *A. niger* and *A. nidulans* cultures, were kindly provided by Matthias Steiger and Clemens Peterbauer (both from the University of Natural Resources and Life Sciences, Vienna, Austria). cDNA was produced from 500 ng total RNA using the SuperScript III (Invitrogen) reverse transcriptase according to the manufacturer's guidelines. The PCR products, which lacked the region encoding the original signal peptide and native stop codon, were digested with the respective enzymes (New England Biolabs), ligated (NEB T4 Ligase) in frame with the digested pGAPZ $\alpha$  vector (Invitrogen), and used to transform *E. coli* Top10F'. Positive clones were selected on LB<sup>Zco</sup> (25  $\mu$ g mL<sup>-1</sup>) plates and the insert sequence was verified by Sanger sequencing.

### Expression in *P. pastoris*

pGAPZ $\alpha$  vectors carrying the ORF of the galactosidases were linearized with *Dra*I and transformed into *P. pastoris* X-33 for secreted expression mediated by the *S. cerevisiae*  $\alpha$ -factor leader sequence. Positive clones were selected on YPD<sup>Zco</sup> (2 % (w/v) peptone, 1 % (w/v) yeast extract, 2 % (w/v) agar, 2 % (w/v) glucose, 100  $\mu$ g mL<sup>-1</sup> zeocin, pH 7.4) plates and used for an initial screening in YPD<sup>Zco</sup> (100  $\mu$ g mL<sup>-1</sup>) medium. From 8 to 12 clones, the one with the highest activity in the culture supernatant was chosen for cultivation in 200 mL YPD medium (2 % (w/v) peptone, 1 % (w/v) yeast extract,

2 % (w/v) glucose, pH 7.4) at 25 °C on an orbital shaker at 180 rpm for a total of 48 h. Cultures were supplemented with an additional 1 % glucose after 24 h.

For large-scale expression of *A. niger* and *A. nidulans* rIacA in fermentors, the cultivation conditions and growth medium were essentially as described previously (Gasser et al. 2010). In short, batch cultivations in 1.5 L minimal mineral medium with glycerol as carbon source were performed in Minifors (Infors HT) bioreactor units. After a batch phase of approximately 25 h (25 g L<sup>-1</sup> yeast dry mass), a constant glucose feed at a rate of 0.269 g min<sup>-1</sup> was initiated and performed for a total process time of 100 h (100 g L<sup>-1</sup> final yeast dry mass). Temperature was set to 25 °C, diluted oxygen concentration was kept at 20 % via stirrer speed, and pH was kept at pH 5.0 by the addition of ammonia throughout the cultivations. Samples for biomass determination and activity assays were taken in regular intervals. For biomass determination, 5 to 10 mL of culture samples were collected by centrifugation, washed twice with RO-H<sub>2</sub>O, and dried to constant weight at 80 °C.

#### Protein purification

Galactosidase-expressing *P. pastoris* clones were cultivated in 10 mL YPG<sup>Zco</sup> (2 % (w/v) peptone, 1 % (w/v) yeast extract, 1 % (w/v) glycerol, 100 µg mL<sup>-1</sup> zeocin, pH 7.4) at 28 °C, 200 rpm on an orbital shaker overnight. From these cultures, main cultures in 200 mL YPD medium were inoculated at an OD<sub>600</sub>=0.05. Cultures were grown at 25 °C, 200 rpm for a total of 48 h, including feeding with additional 1 % glucose after 24 h. Cells were harvested by centrifugation at 4 °C and culture supernatants were collected for protein purification. All subsequent steps were performed at 4 °C. Culture supernatants were concentrated using an Amicon ultrafiltration unit (Millipore) with a 30 kDa NMWL filter (Millipore), followed by buffer exchange to Ni-NTA column loading buffer (20 mM Tris, 20 mM NaCl, 5 mM Imidazole, pH 8.5). Protein-containing solutions were mixed with pre-equilibrated 1 mL of Ni-NTA agarose slurry (Qiagen) and incubated on a rotator for 1 h. Then, the mixture was transferred to a plastic column and, after three washing steps with loading buffer containing 20 mM imidazole (two column volumes per step), recombinant proteins were eluted with 500 mM imidazole (one column volume per elution fraction). Purity of the recombinant enzymes was evaluated by Tris–glycine sodium dodecyl sulfate polyacrylamide gel electrophoresis (SDS-PAGE; resolving gel: T12.5/C1, stacking gel: T5.7/C2.2). Pure fractions were pooled and imidazole was removed by buffer exchange to the storage buffer (20 mM Tris–Cl, 25 mM NaCl, pH 7.5) using Vivaspin columns (30 kDa NMWL; Millipore). All three recombinant proteins were stored at 4 °C and, as such, remained active with only minor loss of activity (<15 %) for at least 18 months.

#### Determination of protein concentration

Protein concentration of purified products was measured after the removal of imidazole using a bicinchoninic acid protein quantification kit (Sigma) with bovine serum albumin (BSA) as standard protein.

#### Product verification by peptide mass fingerprinting

Tryptic digests were essentially performed as described previously (Paschinger et al. 2012a). Briefly, protein bands were cut from Coomassie Brilliant Blue G-250-stained SDS-polyacrylamide gels and, after several washing steps, “in-gel” tryptic digestion was performed at 37 °C overnight. Peptides were released from the gel, dried in a SpeedVac, and resuspended in 10 µL 50 % acetonitrile/0.1 % trifluoroacetic acid prior to analysis in positive ion mode on an Autoflex Speed matrix-assisted laser desorption/ionization–time of flight mass spectrometer (MALDI-TOF/TOF MS; Bruker Daltonics) using 1 % α-cyano-4-hydroxycinnamic as matrix. The obtained list of different *m/z* ratios was used to verify protein identity using MS-Fit (ProteinProspector, UCSF; <http://prospector.ucsf.edu/prospector/mshome.htm>).

#### Removal of *N*-glycans using PNGase F

Approximately 2 µg of purified recombinant protein was supplemented with 1 % SDS and incubated at 95 °C for 5 min. After cooling on ice, 0.5 µL PNGase F (glycosidase F, NEB) or water was added as well as 1× G7 buffer (50 mM sodium phosphate, pH 7.5) and 1 % NP-40 (Nonidet P-40, octylphenoxypolyethoxyethanol) in a total volume of 20 µL. Reactions were incubated at 37 °C for 48 h before Tris–glycine SDS-PAGE (resolving gel: T12.5/C1, stacking gel: T5.7/C2.2) and Coomassie Brilliant Blue G-250 staining were performed.

#### Enzyme activity assays using *p*-nitrophenyl-monosaccharides as substrate

Standard enzymatic activity assays were performed in triplicate with either *P. pastoris* culture supernatants or purified products using *p*-nitrophenyl-β-D-galactopyranoside (PNPG; Sigma) as substrate. Standard assays were performed at a substrate concentration of 5 mM in McIlvaine buffer (citrate–phosphate buffer (McIlvaine 1921)), pH 4.5, at 37 °C in a reaction volume of 40 µL for 2 h. All purified enzymes were also tested for additional activities using a range of *p*-nitrophenyl-sugars as substrates (Table 2). After the addition of 200 µL of 0.4 M glycine/NaOH pH 10.4, *A*<sub>405 nm</sub> was determined on a Tecan Infinite M200 microtiter plate reader (Tecan, Austria). Enzymes were appropriately diluted in order

to measure reactions within the linear range of the assay. Enzyme units are given in micromoles of product (nitrophenol) per minute and specific activity as units per milligram of purified protein.

Determination of the pH optimum, temperature optimum, temperature stability, and metal ion susceptibility

Tests were performed as described above at 37 °C with 5 mM PNPG as substrate. McIlvaine buffers with a pH range from 3 to 8 were used. Tests for the determination of temperature optimum were performed with 5 mM PNPG at different temperatures in a Gradient PCR Thermocycler (Bio-Rad) using the McIlvaine buffer at the pH determined to be optimal for the specific galactosidase. For the determination of temperature stability, aliquots of 10 µL of the respective enzyme, diluted in storage buffer (20 mM Tris-Cl, 25 mM NaCl, pH 7.5), were incubated at 4, 30, 45, 55, 65, and 75 °C for 2 h. Remaining activity was determined using standard PNPG assays at 37 °C. For the reactions supplemented with BSA, the final concentration of BSA was 500 µg mL<sup>-1</sup>. The effect of divalent metal ions was tested using the standard PNPG assay mixtures supplemented with either 1 or 10 mM of the respective metal chloride salts at 37 °C.

Impact of organic solvents on activity and freeze/thaw experiments

Diluted enzyme was used in the setup with 5 mM PNPG as described previously, with the exception that McIlvaine buffer was partially replaced by acetonitrile, acetone, isopropanol (IPA), ethanol (EtOH), methanol (MeOH), or RO-H<sub>2</sub>O to yield the final concentrations of 0, 10, 25, 50, and 75 % (v/v) of the added solvents. The pH of the reaction mixture was adjusted to the optimal pH of the tested enzyme. For freeze/thaw experiments, aliquots of galactosidases with a concentration of 100 µg mL<sup>-1</sup> (±1 mg mL<sup>-1</sup> BSA) were stored in storage buffer (20 mM Tris-Cl, 25 mM NaCl, pH 7.5) at -20 °C. After each freeze/thaw cycle, activity was measured using the standard PNPG assay as described previously.

Determination of  $K_m$ , specific activity,  $k_{cat}$ , and  $K_i$

Standard assays were performed at 37 °C in McIlvaine buffers of the optimal pH for the respective enzyme. Substrate concentrations in the range of 0.1 to 10 mM PNPG were used. Michaelis constant ( $K_m$ ), specific activity, and  $k_{cat}$  were calculated using the nonlinear curve fitting function available in the OriginPro 8 software package. For  $K_i$  determination of galactose, PNPG assays were supplemented with galactose (1–1,000 mM) and IC<sub>50</sub> was calculated based on exponential curve fitting using OriginPro.  $K_i$  was calculated based on the Cheng-Prusoff equation:  $K_i = IC_{50} / (1 + [S] / K_m)$  with IC<sub>50</sub>

being the half maximal inhibitory concentration of galactose,  $[S]$  the PNPG concentration (5 mM), and  $K_m$  the Michaelis-Menten constant. For Dixon plots (Dixon 1953), standard assays were performed at 37 °C with PNPG concentrations of 5, 2.5, and 0.5 mM and supplemented with galactose in the range of 0 to 50 mM.

Determination of α-mannosidase side activity

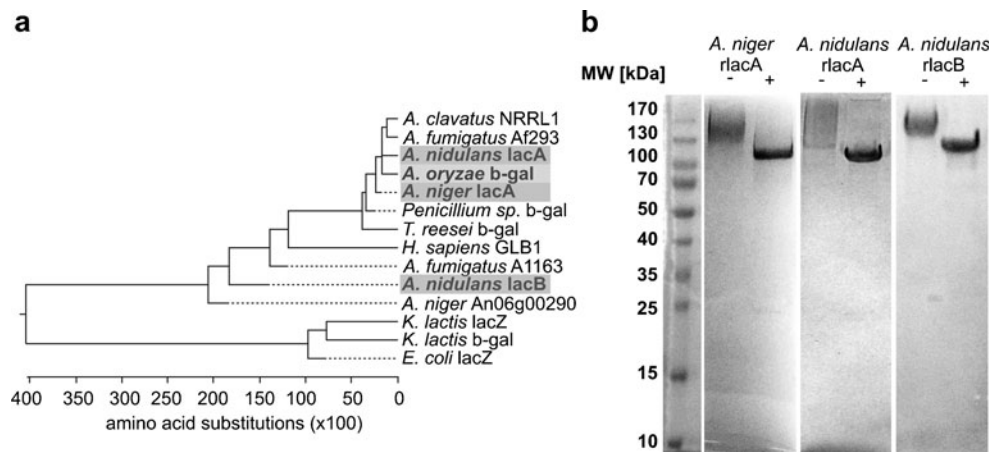
2-Aminopyridine (PA)-labeled Man9 (Takara) was used. Ten picomoles (1 µL) of substrate was mixed with 1 µL MES pH 4.5 or 6.9 and 0.25 µL 0.2 M CaCl<sub>2</sub> and combined with water and 0.5 µg purified enzyme (1.5 µg in case of *A. oryzae* galactosidase) to a total reaction volume of 5 µL. Reactions were incubated for 16 h prior to analysis by reverse-phase high-performance liquid chromatography (HPLC) using a Shimadzu HPLC system equipped with a fluorescence detector (either RF 10AXL or RF 20AX) and a Hypersil ODS Column (5 µm, 4×250 mm) equilibrated with 0.1 M ammonium acetate, pH 4.0 (solvent A). Runs were performed at a flow rate of 1.5 mL min<sup>-1</sup> with a 1 % increase of solvent B (30 % MeOH) per minute for a total of 25 min.

Enzyme activity assays using dabsylated-GalGal glycopeptide as substrate

Dabsylated-GalGal [Gal-β-1,4-GlcNAc-β-1,2-Man-α-1,6(Gal-β-1,4-GlcNAc-β-1,2-Man-α-1,3)Man-β-1,4-GlcNAc-β-1,4-GlcNAc-β-1-Asn] glycopeptide (0.25 nmol) derived from bovine fibrin and possessing the common peptide sequence GENR (Gly-Glu-Asn-Arg) (Altmann et al. 1995) was used in a total reaction volume of 10 µL with galactosidases in McIlvaine buffer pH 4.5. Purified enzyme (0.2 µg) was added in 24-h intervals. Assays were performed at 37 °C (or at 50 °C for *A. nidulans* rIacB) for a total of 120 h (or 240 h for *A. nidulans* rIacB). Removal of galactose moieties was monitored in regular intervals on an Autoflex Speed MALDI-TOF/TOF MS in positive ion mode using 1 % α-cyano-4-hydroxycinnamic as matrix.

Enzyme activity assays using PA-labeled *N*-glycan structure carrying the Galβ1,4Fuc epitope as substrate

PA-labeled *N*-glycan structure carrying the Galβ1,4Fuc epitope derived from *Caenorhabditis elegans* (Yan et al. 2012) was used as substrate. Reactions were performed in McIlvaine buffer (pH 4 to 5, i.e., at the optimal pH for each galactosidase tested) at 37 °C for 24 h with 0.5 µg purified enzyme per assay and analyzed using an Autoflex Speed MALDI-TOF/TOF MS in positive ion mode using 0.3 % 6-aza-2-thiothymine (Sigma) as matrix.



**Fig. 1** Galactosidase phenogram and SDS-PAGE analysis of recombinant enzymes. **a** Protein alignment based on the ClustalW method was performed in MegAlign 7.2.1 (DNASTar Lasergene software package) using full-length protein sequences of galactosidases as obtained from the GenBank database. The phenogram was prepared using the MegAlign's built-in phylogenetic tree function. The enzymes described in this study are indicated by a gray background (including the *A. oryzae* enzyme used for comparative purposes). The amino acid sequences with the following IDs were used: *A. niger* lacA ID XP\_001389622, *A. niger* ID A2QL84, *A. nidulans* lacA ID XP\_658360, *A. nidulans* lacB ID XP\_658584, *A.*

*clavatus* ID XP\_001268843, *A. fumigatus* ID XP\_752787, *A. fumigatus* ID XP\_748360, *A. fumigatus* ID XP\_752787, *A. fumigatus* ID XP\_748360, *A. oryzae* ID XP\_001727461, *Penicillium* sp. ID Q700S9, *Trichoderma reesei* CAD70669, *Homo sapiens* ID NP\_000395, *K. lactis* XP\_452194, *K. lactis* 3OB8\_A, and *Escherichia coli* ID NP\_414878. **b** SDS-PAGE (Tris-glycine; resolving gel: T12.5/C1, stacking gel: T5.7/C2.2) analysis of purified recombinant enzymes. Each galactosidase was obtained free from visible contaminations as judged by Coomassie Brilliant Blue staining. Purified recombinant proteins were incubated with (+) or without (-) PNGase F to verify whether they carry *N*-glycans. *MW* molecular weight in kilodaltons

#### Determination of $\beta$ -1,3 and $\beta$ -1,4 specificity

Fifty micrograms of lacto-*N*-tetraose [Gal- $\beta$ -1,3-GlcNAc- $\beta$ -1,3-Gal- $\beta$ -1,4-Glc] and lacto-*N*-neotetraose [Gal- $\beta$ -1,4-GlcNAc- $\beta$ -1,3-Gal- $\beta$ -1,4-Glc] (Dextra Laboratories) were labeled with PA as described previously (Paschinger et al. 2012b). PA-labeled substrates (final concentration, 40  $\mu$ M) were used for enzymatic assays in McIlvaine buffer pH 4.5, 37  $^{\circ}$ C with 0.5  $\mu$ g purified enzyme in a total reaction volume of 10  $\mu$ L for a total of 48 h. Samples were taken at 2, 24, and 48 h and analyzed by using an Autoflex Speed MALDI-TOF/TOF MS in positive ion mode using 0.3 % 6-aza-2-thiothymine (Sigma) as matrix.

#### Lactose substrate assays and galactooligosaccharide formation

Lactose was used as substrate at a concentration of 20 % (*w/v*) in McIlvaine buffer optimal for the respective galactosidase activity (pH 4 to 5). Four micrograms of purified galactosidase enzyme was added and reactions were performed in a total volume of 50  $\mu$ L for 24 h. Samples were taken at 4 and 24 h for analysis by HPLC (Shimadzu) and an RI detector (Knaur) using a Rezex RHM column (Phenomenex) with 4 mM H<sub>2</sub>SO<sub>4</sub> as solvent at a flow rate of 1 mL min<sup>-1</sup> at 60  $^{\circ}$ C. Monosaccharides and disaccharides used as HPLC standards were purchased from Sigma. GOS were obtained from Agrana Stärke GmbH, Austria.

*A. oryzae*  $\beta$ -galactosidase was purchased from Sigma and purified by cation-exchange chromatography (Zeleny et al.

1997). The DNA sequences of the recombinant galactosidases, as they were obtained in this study, will be available under the GenBank accession numbers KC175324 (*A. niger* lacA), KC145279 (*A. nidulans* lacA), and KC145280 (*A. nidulans* lacB).

## Results

### Expression and purification of recombinant galactosidases

For the *A. niger* lacA and the *A. nidulans* lacA genes, the obtained sequences<sup>1</sup> matched the sequences deposited in the NCBI database (GenBank gene IDs 4977988 and 2876531). Sequence analysis of the PCR products amplified from an *A. nidulans* cDNA corresponding to the ORF of the *A. nidulans* lacB gene identified in this study revealed small differences between the amplified transcript<sup>1</sup> and the predicted ORF deposited in the NCBI database (GenBank gene ID 2876757). The observed differences are most probably due to improper in silico prediction of introns and intron splicing sites as the relevant database entries currently contain only predicted open reading frames based on the genome of *A. nidulans*. All three enzymes contain conserved sequence motifs that are typical for glycoside hydrolase family 35, a member of the glycoside hydrolase clan A (GH-A) (Henrissat and Bairoch 1996;

<sup>1</sup> The DNA sequences described in this paper will appear in DDBJ, ENA, and GenBank<sup>®</sup> Nucleotide Sequence Databases under the accession numbers KC175324 (*A. niger* lacA), KC145279 (*A. nidulans* lacA), and KC145280 (*A. nidulans* lacB).

Cantarel et al. 2009). The protein sequence alignment of the three enzymes (Online Resource 1, Supplemental Fig. S1), as well as a phylogenetic comparison with other galactosidases (Fig. 1a), showed that the sequence similarity between the translated *A. niger lacA* and *A. nidulans lacA* ORF is higher, to each other as compared with the *A. nidulans lacB* gene product. After cloning of the three ORF and initial expression screening, proteins of approximately 130 kDa in size (denoted as *A. niger* and *A. nidulans* rIacA and rIacB hereafter) were secreted into the supernatant of *P. pastoris* cultures and could be detected by Western blotting (via C-terminal Myc/His-tag; data not shown) and by Coomassie Brilliant Blue staining. Furthermore,  $\beta$ -galactosidase activity was confirmed in *P. pastoris* supernatants using PNPG as substrate, whereas  $\beta$ -galactosidase activity was absent in the supernatants of control “empty plasmid” clones. After selection of the best expressing clone for each recombinant galactosidase, the *P. pastoris* supernatants were subject to a single-step His-tag affinity batch purification using Ni-NTA agarose. As judged by SDS-PAGE analysis, pure proteins were obtained (Fig. 1b). Peptide mass fingerprinting (tryptic digests followed by MALDI-TOF/TOF MS analysis) was performed in order to verify the identity of the recombinant proteins. Sixty-seven to eighty percent of the tryptic peptides covering 40–51 % protein sequence could be identified (Online Resource 1, Supplemental Fig. S2). None of the three recombinant proteins contained tryptic peptides that would match the secretion signal peptide. This indicates that signal peptide cleavage by the Kex2 protease occurred correctly. For *A. niger* rIacA, we observed peptides that contain the double glutamine–alanine repeat sequence that follows the Kex2 site. Although not analyzed further, this may indicate that the cleavage at the glutamine–alanine repeats by the Ste13 protease in *P. pastoris* is not efficient in the case of *A. niger* rIacA, a phenomenon that was reported to occur in a protein-dependent manner in *P. pastoris* (Ghosalkar et al. 2008; Invitrogen 2010). Additionally, each galactosidase contains several potential N-glycosylation sites (*A. niger* rIacA has 13, *A. nidulans* rIacA has 7, and *A. nidulans* rIacB has 10 putative N-glycosylation sites; Online Resource 1,

Supplemental Fig. S2) and SDS-PAGE analysis shows a smear suggestive of heterogeneous N-glycosylation of the recombinant proteins (Fig. 1b). Thus, we performed a PNGase F digest with all three enzymes in order to remove potential high mannose N-glycan structures typical for *P. pastoris* (Hamilton et al. 2006). As expected for glycosylated proteins, digestion with PNGase F led, due to removal of the N-glycans, to an increased mobility and a considerable reduction in heterogeneity of the protein bands as judged by SDS-PAGE (Fig. 1b).

#### Enzyme kinetics and characteristics of recombinant galactosidases

We determined the basic enzyme kinetic parameters of the purified recombinant enzymes and compared them with the native *A. oryzae* galactosidase (Zeleny et al. 1997), which is widely used in glycobiotechnological research (Scheckermann et al. 1997; Torres et al. 2003; Vera et al. 2011). The  $K_m$  value of the *A. niger* rIacA and *A. nidulans* rIacA galactosidases toward PNPG was very similar and just below 2 mM, whereas the other two enzymes (*A. nidulans* rIacB and *A. oryzae* galactosidase) appear to have slightly lower affinity toward this substrate (Table 1). We also observed up to 30-fold difference in specific activity among the studied enzymes, with *A. niger* rIacA displaying the highest specific activity followed by *A. nidulans* rIacA. The low activity of *A. nidulans* rIacB was already observed in the initial screening of multiple *P. pastoris* clones that expressed the enzyme, as well as in multiple batches of purified enzyme. Similarly, different batches of the other two recombinant galactosidases showed consistent  $K_m$  values and specific activities (data not shown). Generally, the kinetic values obtained in this study, and shown in Table 1, are comparable to those previously reported for other  $\beta$ -galactosidases (Park and Oh 2010).

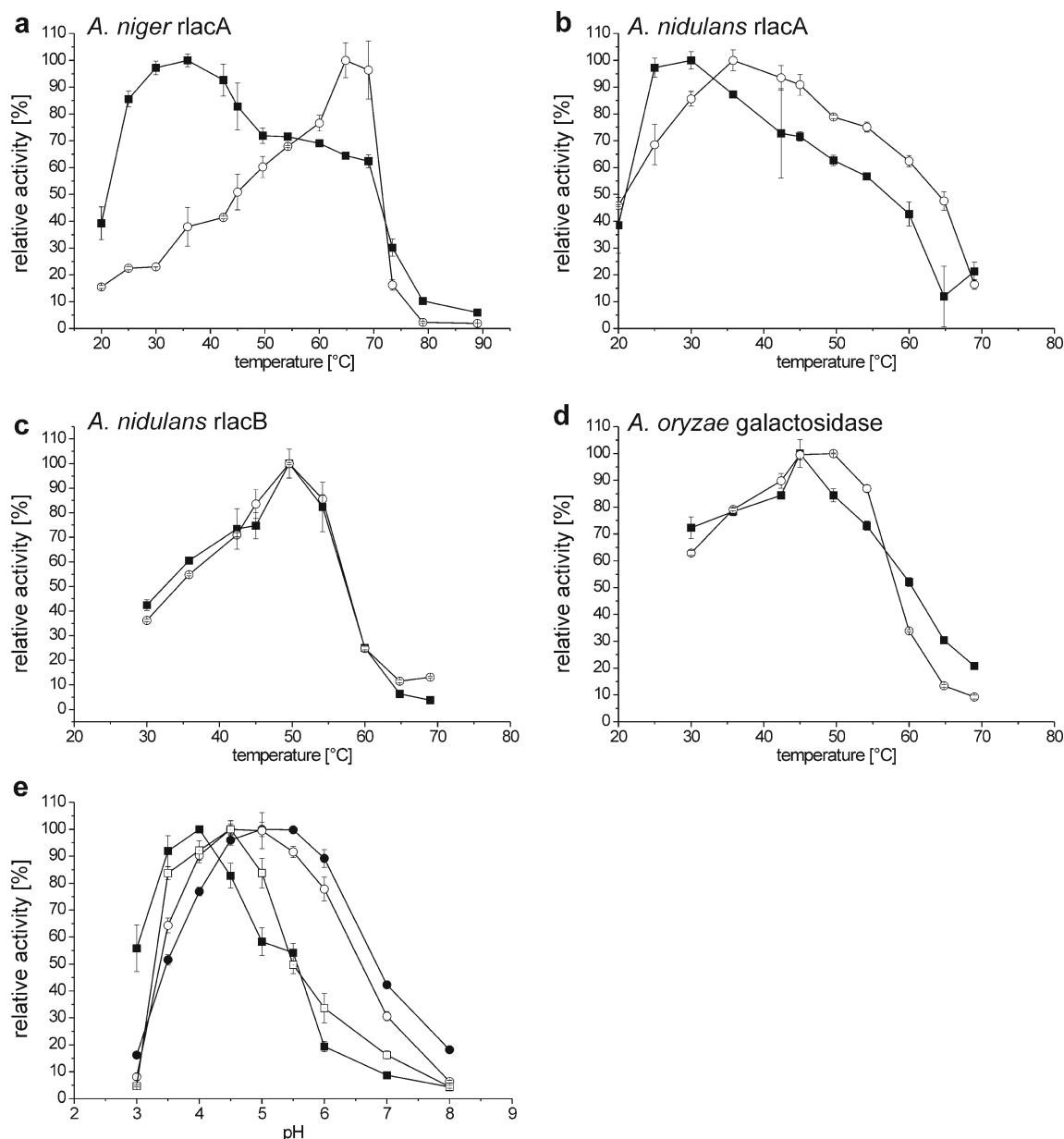
Since various galactosidases were shown to be sensitive to the presence of divalent metal cations (Tanaka et al. 1975; Sen et al. 2012), we evaluated the influence of selected metal ions on the activity of recombinant *Aspergillus* galactosidases.

**Table 1** Properties of *Aspergillus*  $\beta$ -galactosidases

	$K_m$ [mM]	specific activity [ $\mu\text{mol min}^{-1} \text{mg}^{-1}$ ]	$k_{\text{cat}}$ [ $\text{s}^{-1}$ ]	$k_{\text{cat}}/K_m$ [ $\text{mM}^{-1} \text{s}^{-1}$ ]
<i>A. niger</i> rIacA	1.84 $\pm$ 0.33	89.3 $\pm$ 5.6	195.9 $\pm$ 3.6	105.3 $\pm$ 15.2
<i>A. nidulans</i> rIacA	1.85 $\pm$ 0.21	29.2 $\pm$ 1.3	63.4 $\pm$ 0.9	34.1 $\pm$ 1.5
<i>A. nidulans</i> rIacB	3.33 $\pm$ 0.29	2.9 $\pm$ 0.1	6.6 $\pm$ 0.9	1.9 $\pm$ 0.3
<i>A. oryzae</i> $\beta$ -galactosidase <sup>a</sup>	3.02 $\pm$ 0.61	19.3 $\pm$ 1.4	46.4 $\pm$ 1.2	14.6 $\pm$ 0.6

$K_m$ , specific activity,  $k_{\text{cat}}$ , and  $k_{\text{cat}}/K_m$  (as determined with standard reaction conditions at 37 °C) of purified enzymes using PNPG as substrate are shown. Values represent averages of three measurements $\pm$ standard error

<sup>a</sup> Native *A. oryzae* galactosidase was obtained commercially and is presented for comparative purposes



**Fig. 2** Temperature and pH optima of *Aspergillus* galactosidases. The activity of the *Aspergillus* galactosidases was measured at various temperatures: **a** *A. niger* rlaA, **b** *A. nidulans* rlaA, **c** *A. nidulans* rlaB, and **d** *A. oryzae* galactosidase. *Black squares* represent data obtained without BSA supplementation and *open circles* represent data obtained with BSA supplementation ( $500 \mu\text{g mL}^{-1}$  BSA). The activity of the galactosidases

was also measured at various pH values (**e**): *black squares* *A. niger* rlaA, *black circles* *A. nidulans* rlaA, *open circles* *A. nidulans* rlaB, *open squares* *A. oryzae* galactosidase. Reactions were performed at  $37^\circ\text{C}$  (unless otherwise indicated) with  $5 \text{ mM}$  PNPG as substrate and  $0.02 \text{ U } \mu\text{L}^{-1}$  of galactosidase per reaction. All values represent averages  $\pm$  standard error

Using PNPG assays supplemented with different metal ions, we found no clear impact of these ions on the activity of the studied galactosidases (Online Resource 1, Supplemental Fig. S3).

For enzyme activity tests, diluted enzymes were used in order to ensure measurements in the linear range. We observed that the supplementation of the diluted enzymes with BSA (for all galactosidases) leads to enhanced activity ranging from two times for *A. nidulans* rlaB to ten times for *A. niger* rlaA (data not shown). The most probable explanation for this

observation are molecular crowding effects of proteins and solvents, which can have a stabilizing effect on diluted enzymes in solution (Homouz et al. 2008; Shen et al. 2009). The following tests were performed without and with BSA supplementation in order to account for this observation.

In terms of optimal temperature, we observed unexpected differences among recombinant galactosidases (Fig. 2). Without BSA supplementation, *A. niger* rlaA showed a temperature optimum of about  $35^\circ\text{C}$  with a very broad temperature range of activity, showing 60 % activity at temperatures as high

as 70 °C (Fig. 2a). However, the addition of BSA as a stabilizing agent resulted in a shift of the temperature optimum to 65 °C; this stabilizing effect was also evident when testing the temperature stability of different batches of *A. niger* rIacA. Similar to *A. niger* rIacA, recombinant lacA from *A. nidulans* also showed a rather low temperature optimum of about 30 °C (Fig. 2b), a result comparable to the previous study on a purified  $\beta$ -galactosidase from *A. nidulans* (Díaz et al. 1996); the addition of BSA also had a stabilizing effect on enzyme activity. *A. nidulans* rIacB and *A. oryzae* galactosidase showed a rather sharp temperature optimum between 45 and 55 °C irrespective of the presence of BSA (Fig. 2c, d). We also tested the thermal stability of the galactosidases and observed that BSA supplementation also had a stabilizing effect on the storage of enzymes at low temperatures, whereas at higher temperatures, BSA does not enhance the stability of the enzymes (Online Resource 1, Supplemental Fig. S4).

For all recombinant enzymes, the pH optimum was between pH 4 and 5.5 with both *A. nidulans* galactosidases retaining 80 to 90 % of their maximal activity at pH 6 (Fig. 2e). These findings are in contrast with recently reported lower pH optimum for the homologous protein derived from *A. niger* van Tiegh (O'Connell and Walsh 2010) and with data acquired on a purified *A. nidulans*  $\beta$ -galactosidase, which was shown to have a pH optimum of 7.5 (Díaz et al. 1996). The addition of BSA had no significant effect on the pH optima of the analyzed galactosidases.

For industrial applications in which large amounts of products accumulate, the tolerance of recombinant enzymes toward high product concentrations is a critical factor (Vera et al. 2011). We used standard PNPG assays, supplemented with different amounts of either glucose or galactose (as products from, e.g., lactose digestion), in order to investigate product inhibition. We found that all enzymes, including *A. oryzae* galactosidase, were strongly inhibited by galactose but not by glucose (Online Resource 1, Supplemental Table S1). *A. nidulans* rIacA proved to be the least inhibited by galactose, as it is also indicated by the calculated  $K_i$  values for galactose:  $K_i=3.0, 10.2, 1.4,$  and  $0.6$  mM for *A. niger* rIacA, *A. nidulans* rIacA, *A. nidulans* rIacB, and *A. oryzae* galactosidase, respectively. In order to further analyze the mode of enzyme inhibition by galactose, additional enzymatic assays with different substrate (PNPG) and galactose concentrations were performed. As expected, Dixon plots indicated that galactose acted as competitive inhibitor on all enzymes in this study (data not shown).

#### Substrate specificity of recombinant galactosidase preparations

*p*-Nitrophenyl derivatives also serve as good substrates in quickly screening enzyme activity. Thus, we used ten different *p*-nitrophenyl substrates in order to test the recombinant

enzyme preparations for potential activities toward other terminal monosaccharide residues, which, for example, could derive from contaminations with *P. pastoris* proteins. We show that the enzyme preparations exhibited extremely weak or negligible activity toward other substrates than PNPG and thus possess very high purity (Table 2).

In order to appraise the analytical value of these enzymes, we also tested several potential “natural” substrates: a glycopeptide containing a biantennary *N*-glycan with two terminal galactose residues, two tetrasaccharides having either  $\beta$ -1,3-linked or  $\beta$ -1,4-linked terminal galactose residues (lacto-*N*-tetraose and lacto-*N*-neotetraose) and an *N*-glycan structure with  $\beta$ -1,4-linked galactose attached to a core  $\alpha$ 1,6-linked fucose (the *N*-glycan containing the “Gal $\beta$ 1,4Fuc” epitope). In addition, we tested whether the preparations of recombinant galactosidase act on an oligomannosidic structure with nine mannose residues.

#### *N*-glycans as substrates for *Aspergillus* galactosidases

The dabsylated-GalGal glycopeptide derived from bovine fibrin carries two terminal galactose residues. The assays with the dabsylated-GalGal glycopeptide show that *A. niger* rIacA can be used to trim the galactose moieties from the substrate. Approximately 5 % of the galactose residues, as estimated from the MALDI-TOF/TOF MS data, were not cleaved, although assays were incubated for up to 96 h with additional enzyme being added every 24 h (Fig. 3a). Since it has been estimated that roughly 95 % of the galactose on the

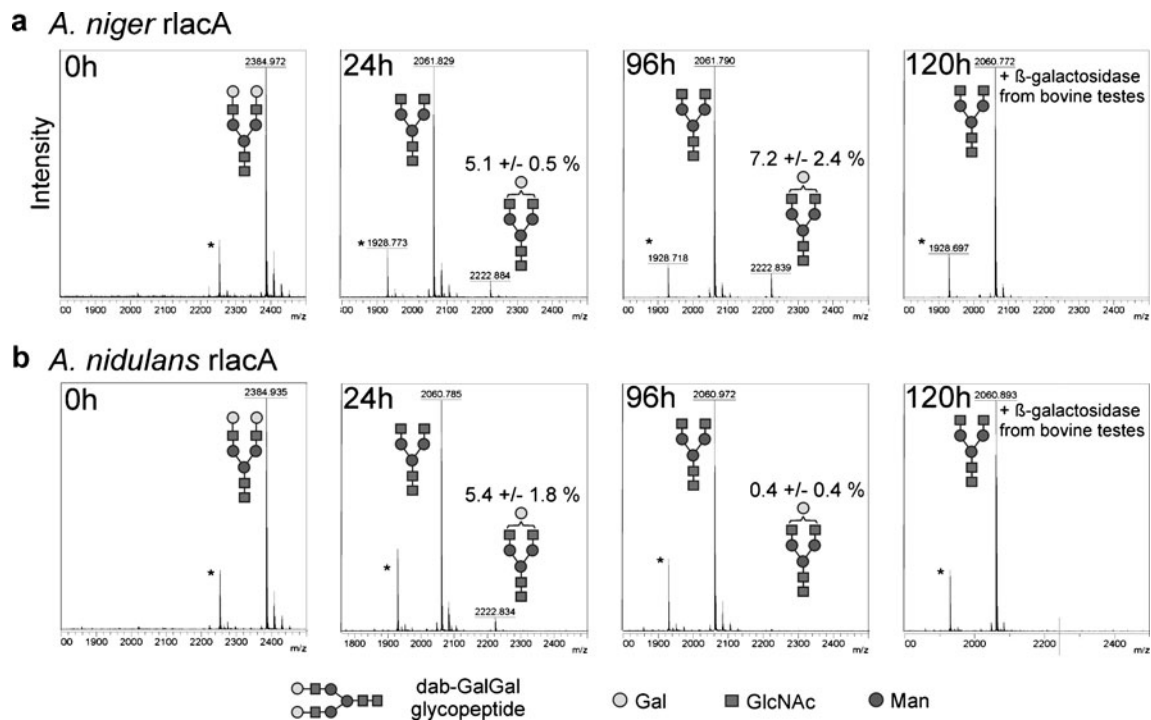
**Table 2** Activity of recombinant galactosidase preparations toward substrates not having a terminal  $\beta$ -galactose residue

Percent activity	<i>A. niger</i> rIacA	<i>A. nidulans</i> rIacA	<i>A. nidulans</i> rIacB
$\beta$ -Galactose	100	100	100
$\alpha$ -Galactose	<0.01	<0.1	<0.5
$\alpha$ -Glucose	<0.1	0	<2.0
$\beta$ -Glucose	<0.1	<0.1	<2.0
$\alpha$ -Xylose	<0.05	0	<2.0
$\beta$ -Xylose	<0.1	<0.05	<2.0
$\alpha$ -GlcNAc	0	<0.05	<0.15
$\beta$ -GlcNAc	0	<0.05	<0.1
$\alpha$ -GalNAc	0	<0.01	0
$\beta$ -GalNAc	ND	0	<1.0
$\alpha$ -Mannose	0	0	<0.5

Activities were determined with different *p*-nitrophenyl substrates in standard reaction conditions for 4 h. Values are given in percent, with PNPG substrate defined as 100 % activity

ND not determined, *GlcNAc* *N*-acetylglucosamine, *GalNAc* *N*-acetylgalactosamine



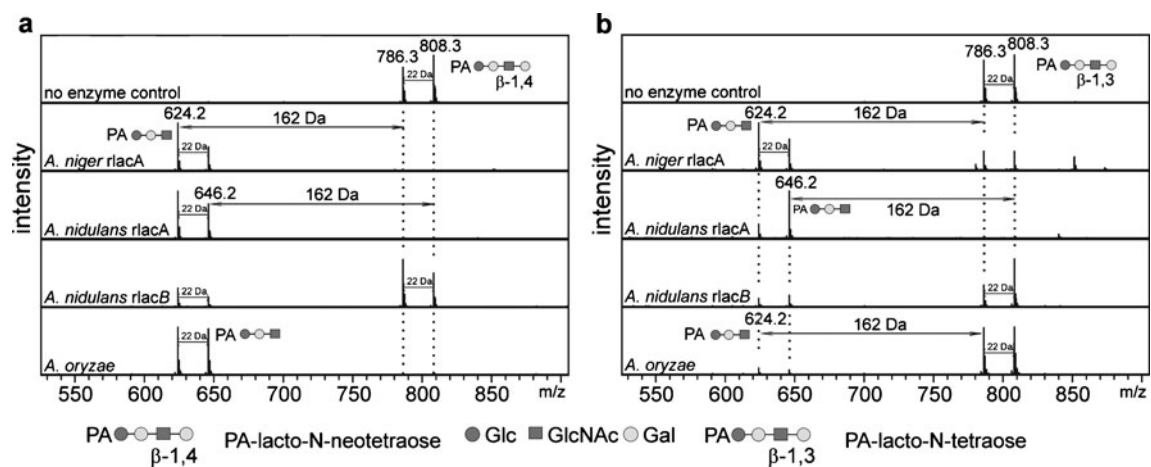


**Fig. 3** Complex *N*-glycans as substrates for recombinant galactosidases. Dabsylated-GalGal glycopeptide derived from bovine fibrin was used as substrate for **a** *A. niger* rIacA and **b** *A. nidulans* rIacA. Additional enzyme (0.2 μg) was added every 24 h. An approximate amount of 5 % non-cleavable galactose, which corresponds to β-1,3-linked

galactose remained in the *A. niger* rIacA reactions (**a**) and could be successfully removed upon the addition of bovine testes galactosidase at 96 h. The glycans are depicted following the glycan nomenclature of the Consortium for Functional Glycomics (<http://www.functionalglycomics.org>)

glycopeptide are β-1,4-linked, whereas the residual 5 % are β-1,3-linked (Pabst et al. 2007), the assays indicate a strict β-1,4 specificity of *A. niger* rIacA under these conditions. The residual 5 % of the galactose residues could be removed by addition of bovine testes β-galactosidase known to trim β-

1,3-linked galactose residues (Distler and Jourdan 1973). Similar to *A. niger* rIacA, *A. nidulans* rIacA and rIacB could also be used for the removal of galactose from the fibrin-derived dabsylated-GalGal glycopeptide. However, in contrast to *A. niger* rIacA, *A. nidulans* rIacA removed almost all



**Fig. 4** β-1,3 activity of recombinant galactosidases. PA-labeled lacto-*N*-neotetraose (contains terminal β-1,4-Gal) (**a**) and lacto-*N*-tetraose (contains terminal β-1,3-Gal) (**b**) were used as substrates for recombinant and native galactosidases (0.5 μg of each enzyme was used). After 24 h incubation, reactions were analyzed by MALDI-TOF/TOF MS.

Hydrogen (*m/z* 786.3 and 624.2) as well as sodium adducts (*m/z* 808.3 and 646.2) were detected. The removal of galactose resulted in Δ*m/z* 162 Da. The glycans are depicted following the glycan nomenclature of the Consortium for Functional Glycomics (<http://www.functionalglycomics.org>)

galactose residues (0.4 % remaining) within 96 h, indicating a  $\beta$ -1,3 hydrolyzing activity of this galactosidase (Fig. 3b). Due to the low efficiency of *A. nidulans* rlaC, higher temperatures and longer incubation times were necessary to achieve the same degree of substrate conversion and, similar to *A. niger* rlaA, no cleavage of  $\beta$ -1,3-galactose residues from the fibrin-derived dabsylated-GalGal glycopeptide occurred (data not shown).

#### $\beta$ -1,3 hydrolyzing activity of recombinant and native galactosidases

To further address the  $\beta$ -1,4 and  $\beta$ -1,3 specificity of the recombinant enzymes, pyridylaminated forms of lacto-*N*-tetraose [Gal- $\beta$ -1,3-GlcNAc- $\beta$ -1,3-Gal- $\beta$ -1,4-Glc] and lacto-*N*-neotetraose [Gal- $\beta$ -1,4-GlcNAc- $\beta$ -1,3-Gal- $\beta$ -1,4-Glc] were tested as substrates. As judged by MALDI-TOF/TOF MS analyses, all three recombinant enzymes, as well as the native galactosidase from *A. oryzae*, accept both linear substrates, although with different efficiencies (Fig. 4 and Supplemental Table S2). Although in most studies this aspect of family 35  $\beta$ -galactosidases is not addressed, these findings are in line with the data on purified  $\beta$ -galactosidase from *A. niger*, which was shown to act, among others, on Gal- $\beta$ -1,3-Gal- $\beta$ -PNP, Gal- $\beta$ -1,3-Gal- $\alpha$ -PNP, and to lesser extent, Gal- $\beta$ -1,3-GalNAc/GlcNAc substrates (Sykes et al. 1983).

#### Other tests on pyridylaminated *N*-glycans

In the experiments described previously, we could show that the recombinant galactosidases remove terminal galactose residues linked to *N*-acetylglucosamine (either from a branched biantennary *N*-glycan or a linear tetrasaccharide). Studies on some invertebrate *N*-glycans clearly demonstrate the existence of structures carrying galactose residues also directly  $\beta$ -1,4-linked to fucose (Gal $\beta$ 1,4Fuc epitope (Zhang et al. 1997b; Yan et al. 2012)). Using a PA-labeled substrate and MALDI-TOF/TOF MS analysis of the assays, we show that all three recombinant galactosidases were able to catalyze the removal of the galactose residue from the Gal $\beta$ 1,4Fuc epitope (Fig. 5 and Online Resource 1, Supplemental Fig. S5). In agreement with all previous tests, despite equal amounts of protein used, *A. nidulans* rlaC showed incomplete conversion due to lower efficiency of this enzyme.

As a final test of purity, we also tested preparations of both native and recombinant enzymes for potential mannosidase activity using PA-labeled oligomannosidic Man<sub>9</sub>, since *p*-nitrophenyl-mannoside is often poorly accepted by  $\alpha$ 1,2-mannosidases as a substrate (Forsee et al. 1989). Any mannosidase activity present in galactosidase preparations would be detrimental for the potential use in mass spectrometric *N*-glycan analyses, in which the analyzed glycans contain both mannose and galactose as terminal residues, since these

monosaccharides have the same mass (162.14 Da when bound to a glycan). Indeed, class I mannosidase activity was observed when using commercially available, native *A. oryzae* galactosidase (Online Resource 1, Supplemental Fig. S6). In contrast,  $\alpha$ 1,2-mannosidase activity was not observed in the preparations of recombinantly produced and purified *Aspergillus* enzymes (Online Resource 1, Supplemental Fig. S6), indicating the successful removal of endogenous *P. pastoris* mannosidases during protein purification.

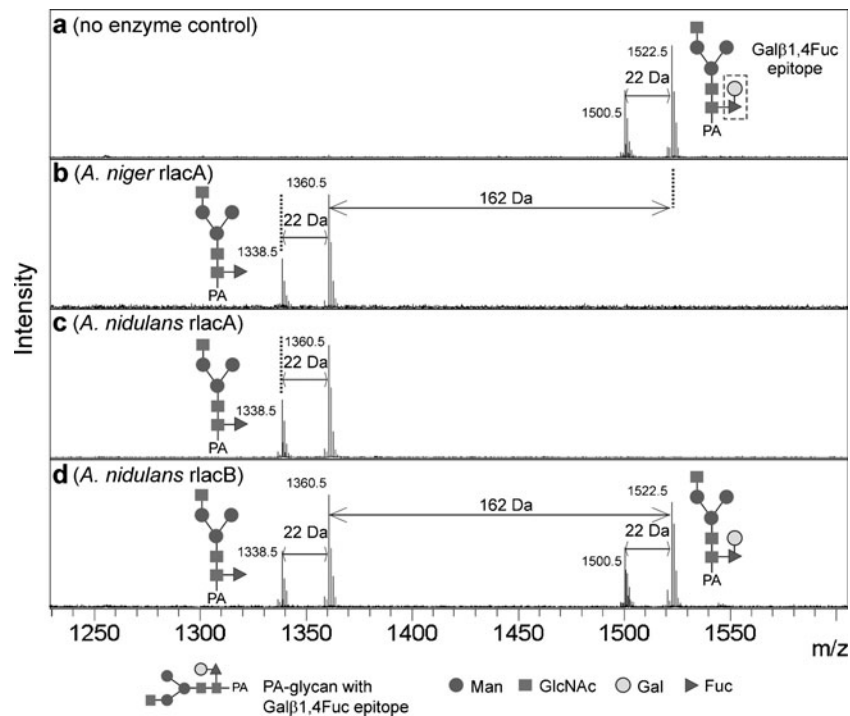
#### Lactose as substrate and galactooligosaccharide formation by galactosidases

We tested whether lactose is accepted as substrate and whether using lactose as a substrate could lead to GOS formation. At a lactose concentration of 20 %, all three recombinant galactosidases could be successfully used to hydrolyze lactose. After 4 h of incubation, additional peaks were detected, which co-eluted with trigalactooligosaccharides and tetragalactooligosaccharides in a commercial GOS preparation. Prolonged incubation for 24 h leads to degradation of GOS and lactose to glucose and galactose. The conversion efficiency to monosaccharides of the three recombinant enzymes was in agreement with the specific activities that were also observed for PNPG as substrate; *A. niger* rlaC showed the highest efficiency, followed by *A. nidulans* rlaC and rlaB (Online Resource 1, Supplemental Fig. S7).

#### Stability of recombinant galactosidases

For certain industrial applications such as transgalactosylation other than GOS formation, substantial amounts of organic solvents might be present in a reaction mixture in order to dissolve the substrate (Scheckermann et al. 1997). We examined the influence of organic solvents including acetonitrile, acetone, IPA, EtOH, and MeOH on the enzymatic activity using PNPG assays. The data obtained show that all three recombinant galactosidases retained high activity with considerably high amounts of these solvents; *A. niger* rlaC displayed the highest tolerance (Online Resource 1, Supplemental Fig. S8). Interestingly, in some cases, the highest enzymatic activity was observed at intermediate organic solvent concentrations. This effect, similar to the addition of BSA to the diluted enzyme, can be explained by refolding of partly misfolded protein and its subsequent stabilization induced either by molecular crowding effects or simply by altered properties of the solution (Homouz et al. 2008; Shen et al. 2009). In contrast, the addition of pure water to dilute the buffer, instead of organic solvent, had a minor effect on enzyme activity (Online Resource 1, Supplemental Fig. S8).

As described in the “Materials and methods” section, all three preparations of recombinant, purified galactosidases could be stored as concentrated enzyme solutions at 4 °C for



**Fig. 5** Unusual galactose-carrying *N*-glycan structures as substrates. A PA-labeled *N*-glycan structure carrying Gal $\beta$ 1,4Fuc epitope was tested as a substrate for recombinant galactosidases (**a** no enzyme, **b** *A. niger* rIacA, **c** *A. nidulans* rIacA, and **d** *A. nidulans* rIacB; 0.5  $\mu$ g of each enzyme was used). The substrate has an  $m/z$  of 1,500.5 (hydrogen adduct) and 1,522.5 (sodium adduct), whereas the product has an

18 months without major loss of activity (<15 %), indicating high stability. In order to further investigate the stability of the enzymes, we performed freeze/thaw experiments and show that all *Aspergillus* galactosidases, including the nonrecombinant *A. oryzae* galactosidase, could withstand at least ten freeze/thaw cycles without major loss of enzymatic activity (Online Resource 1, Supplemental Fig. S9). The enzymes were stable at a concentration of 100  $\mu$ g mL<sup>-1</sup> without the addition of glycerol as a cryoprotective agent. Furthermore, no significant positive effect of BSA supplementation to the storage solution for protein stability was observed.

#### Scale-up of *A. niger* rIacA and *A. nidulans* rIacB expression

The use of *P. pastoris* as an expression host followed by one-step His-tag purification was found to be an excellent choice for recombinant expression and subsequent purification of fungal  $\beta$ -galactosidases. Efficient low-cost production of recombinant proteins with high yields is of great importance, especially for enzymes of potential industrial use. As estimated by the specific activity of the purified enzymes, yeast culture supernatants contained recombinant protein in a concentration of more than 100  $\mu$ g mL<sup>-1</sup> after 48 h of growth in shaker flasks without optimization of the culture conditions at

expected  $m/z$  of 1,338.5 (hydrogen adduct) and 1,360.5 (sodium adduct). Additional MS/MS spectra show that the 162-Da loss attributes to the loss of the galactose moiety and not a mannose moiety (Online Resource 1, Supplemental Fig. S5). The glycans are depicted following the glycan nomenclature of the Consortium for Functional Glycomics (<http://www.functionalglycomics.org>)

low cell densities in complex medium. For *P. pastoris* as expression host, high cell densities can be achieved in fermentors in defined minimal medium; however, cultivation in minimal medium can also come at the cost of lower yields of recombinant protein as compared with complex medium (Macauley-Patrick et al. 2005). To examine this, we performed pilot expressions with *A. niger* rIacA and *A. nidulans* rIacA expressing *P. pastoris* clones in fermentors. We did not perform expression of *A. nidulans* rIacB in fermentors, since the characterization of this enzyme indicated limited value for glycobiochemical and biotechnological applications. A simple linear glucose feed protocol aiming at a final yeast dry mass of 100 g L<sup>-1</sup> and a total process time of 100 h resulted in very high recombinant protein titers with up to approximately 3.5 and 0.2 g L<sup>-1</sup> of recombinant protein for *A. niger* rIacA and *A. nidulans* rIacA, respectively (Online Resource 1, Supplemental Fig. S10).

#### Discussion

In this study, we cloned, expressed, purified, and analyzed properties of two previously uncharacterized  $\beta$ -galactosidases from *A. nidulans* and of the homologous enzyme from *A.*

*niger* previously expressed in various systems optimized for high-yield protein production (Oliveira et al. 2011) and used to study Lac<sup>-</sup> phenotype of *S. cerevisiae* (Kumar et al. 1992). The previously uncharacterized aspects of these three enzymes are compared to those of the commercially available, native enzyme from *A. oryzae*. We demonstrate that one of the recombinant enzymes, *A. nidulans* rIacA, has a number of exceptional properties, including reduced inhibition by galactose ( $K_i=10.2$  mM) and an increased activity toward  $\beta$ -1,3-linked terminal galactose (Fig. 3 and Online Resource 1, Supplemental Table S2). The enzymes were essentially free from other glycosidase activities (including  $\alpha$ 1,2-mannosidase activity) and performed up to ten times better when incubated in presence of BSA. As such, these enzymes are suitable for a wide range of applications. On the other hand, the *A. nidulans* rIacB underperformed in most aspects tested in this study.

To date, none of the  $\beta$ -galactosidases were shown to have absolute specificity toward either terminal  $\beta$ -1,3-linked,  $\beta$ -1,4-linked, or  $\beta$ 1,6-linked galactose. Most  $\beta$ -galactosidases (the ones from *E. coli*, *A. oryzae*, *Canavalia ensiformis* (jack beans), and *S. pneumoniae*) strongly prefer terminal  $\beta$ -1,4-linked galactose; these enzymes were also shown to process terminal  $\beta$ -1,3-linked galactose, albeit at a very low rate (Zeleny et al. 1997). On the other hand, bovine testes  $\beta$ -

galactosidase prefers terminal  $\beta$ -1,3-linked galactose, but can also process  $\beta$ -1,4-linked galactose efficiently (Distler and Jourdian 1973). Accordingly and similar to *A. niger* rIacA described in this study (Fig. 3), *A. oryzae*  $\beta$ -galactosidase activity toward  $\beta$ -1,3-galactose residues has proven insufficient for complete degalactosylation of a bovine fibrin-derived dabsylated-GalGal glycopeptide (Mucha et al. 2004). However, *A. nidulans* rIacA was shown here to have increased preference toward  $\beta$ -1,3-linked galactose and to possess the ability to remove  $\beta$ -1,3-linked galactose residues from the dabsylated-GalGal glycopeptide (Fig. 3 and Online Resource 1, Supplemental Table S2). In addition, this enzyme has already been used for the removal of terminal  $\beta$ -1,3-linked galactose from oyster (hybrid) *N*-glycans in our laboratory (K. Paschinger, personal communication).

The  $\beta$ -galactosidases also differ in their ability to process terminally galactosylated structures according to an *N*-glycan backbone. Recently, it was shown that *C. ensiformis* galactosidase is not able to remove galactose  $\beta$ -1,4-linked to a core fucose residue, a structure found in many species belonging to Protostomia, whereas *S. pneumoniae* galactosidase could digest that epitope (Takeuchi et al. 2011). All recombinant enzymes tested in the current study were shown to be able to remove galactose  $\beta$ -1,4-linked to a core fucose residue. The

**Table 3** Substrate preference of commonly used  $\beta$ -galactosidases in glycomic studies

Substrate type/complexity	monosaccharide (aryl)	linear tetrasaccharide	linear tetrasaccharide	biantennary <i>N</i> -glycan	biantennary <i>N</i> -glycan	<i>N</i> -glycan with galactosylated core
Substrate	<i>p</i> -nitrophenyl- $\beta$ -Gal	Lacto- <i>N</i> -tetraose (terminal $\beta$ 3-Gal)	Lacto- <i>N</i> -neotetraose (terminal $\beta$ 4-Gal)	$\beta$ 4Gal $\beta$ 4Gal-glycan/GP	$\beta$ 3Gal $\beta$ 3Gal-glycan/GP	Gal $\beta$ 1,4Fuc-glycan
<i>E. coli</i> <sup>b</sup>	+	+	+	—	n/d	n/d
<i>Canavalia ensiformis</i> (jack bean) <sup>b</sup>	+	+	+	+	n/d	— <sup>(a)</sup>
<i>Streptococcus pneumoniae</i> <sup>b</sup>	+	+	+	+	n/d	+ <sup>(a)</sup>
<i>A. oryzae</i> <sup>b</sup>	+	+	+	+ <sup>(c)</sup>	— <sup>(c)</sup>	+ <sup>(dd)</sup>
<i>A. niger</i> rIacA	+	+	+	+	—	+
<i>A. nidulans</i> rIacA	+	+	+	+	+ (weak)	+
<i>A. nidulans</i> rIacB	+(weak)	+(weak)	+(weak)	+(weak)	—	+(weak)
<i>Bos taurus</i> (testes) <sup>e</sup>	+	n/d	n/d	+	+	n/d

The analyses performed in this study are labeled with gray background *n/d* not determined, + activity detected, — activity not detected, *GP* glycopeptide

<sup>a</sup> Takeuchi et al. (2011)

<sup>b</sup> Zeleny et al. (1997)

<sup>c</sup> Mucha et al. (2004)

<sup>d</sup> Titz et al. (2009)

<sup>e</sup> Distler and Jourdian (1973)

activities displayed by recombinant and native *Aspergillus*  $\beta$ -galactosidases in comparison to other commonly used  $\beta$ -galactosidases in glycan analyses are summarized in Table 3.

Using high lactose concentrations for our assays to test the ability for lactose hydrolysis, we could show that all three recombinant enzymes were able to accept lactose as a substrate, although with large differences in terms of their efficiency. The commercial *A. oryzae*  $\beta$ -galactosidase has already been used in multiple studies on lactose hydrolysis and GOS production (Iwasaki et al. 1996; Park and Oh 2010; Guerrero et al. 2013). The kinetics of the GOS production process demand that the amount of enzyme, the lactose concentration, and the reaction conditions, such as temperature, pH, and reaction time, are tightly controlled in order to allow for efficient synthesis (Vera et al. 2011; Palai et al. 2012). In line with the dynamics of GOS production, we observed the appearance of GOS after 4 h of incubation with an initial lactose concentration of 20 % and their subsequent degradation after prolonged incubation for 24 h (Online Resource 1, Supplemental Fig. S7) It is beyond the scope of the current study to optimize the GOS production conditions; however, these initial results highlight that *A. niger* rlacA and *A. nidulans* rlacA are suitable for such a process in principle and may also serve for other transglycosylation reactions that are mediated by  $\beta$ -galactosidases such as, for example, antibiotics and PEG transglycosylation (Scheckermann et al. 1997; Fang et al. 2012) as these enzymes tolerate fairly high amounts of organic solvents.

In order to improve the cost-effectiveness of large-scale industrial applications for lactose hydrolysis and GOS production, various immobilization strategies, such as the immobilization on amino-epoxy beads, magnetic beads, and cotton cloth, were already applied for  $\beta$ -galactosidases (Albayrak and Yang 2002; Torres et al. 2003; Zhang et al. 2010); altogether, these immobilization strategies have been successful as they increase the operational, thermal, and pH robustness of the enzymes (Klein et al. 2013) and are, as such, beneficial for continuous bioprocesses (Liu et al. 2012). Considering the generally high thermal stability of *A. niger* and *A. nidulans* rlacA, it will also be of great interest to explore different immobilization strategies for these novel enzymes in future projects.

Moreover,  $\beta$ -galactosidases have also been successfully engineered in order to achieve decreased product inhibition by galactose (Hu et al. 2010; Kim et al. 2011). In this regard, *A. nidulans* rlacA may be, due to its generally high  $K_i$  for galactose, a very interesting and suitable candidate for future protein engineering studies. The availability of crystal structures of closely related enzymes, including the recently reported structure of *A. oryzae*  $\beta$ -galactosidase (Maksimainen et al. 2013) may further facilitate not only the directed engineering of fungal galactosidases toward decreased product inhibition but also the engineering toward other relevant improved activities such as glucuronidase (Xiong et al. 2007), fucosidase (Zhang et al. 1997a), or glycosynthase activity (Shim et al. 2012).

Large-scale processes demand large quantities of enzyme, and the use of immobilized enzymes proved successful in order to improve the economics of such processes. In the current study, high yields of these prospective enzymes could be achieved by using the *P. pastoris* GAP promoter system and fermentor cultivation (Online Resource 1, Supplemental Fig. S10). Whereas we only used minimal medium, yields may be further increased by growth medium optimization and the addition of proper feed supplements (Pal et al. 2006) or altered process conditions and advanced feed strategies that already proved successful for GAP promoter-based protein production processes in *P. pastoris* (Maurer et al. 2006; Baumann et al. 2008). Nevertheless, according to our fermentor experiments, cost-effective large-scale production of these novel recombinant galactosidases is certainly feasible.

All three enzymes in the current study share predicted  $\beta$ -galactosidase protein domains, and we could verify this hydrolytic activity. *A. niger* and *A. nidulans* rlacA could be successfully applied in order to process lactose and *N*-glycan substrates. Nevertheless, *A. nidulans* rlacB showed the weakest performance on all substrates that were tested. As the ORF used for expression did not completely match the predicted one, we cannot exclude the possibility that this discrepancy influences the catalytic activity of this enzyme. In their natural habitat, fungi subsist to some extent on the degradation of plant material and are a valuable source for polysaccharide-degrading enzymes (van den Brink and de Vries 2011). Furthermore, filamentous fungi also produce  $\beta$ -galactosidases when grown on substrates such as polygalacturonic acid (McKay 1991). In this context, it is possible that neither of the tested compounds represents a natural substrate for the *A. nidulans* rlacB enzyme.

In conclusion, with the potential of low-cost and efficient large-scale production and ease of purification, recombinant galactosidases from *A. niger* and *A. nidulans* (rlacA) enrich the series of valuable  $\beta$ -galactosidase enzymes available for various biotechnological and analytical procedures and may also serve as potential targets for glycoenzyme engineering studies.

**Acknowledgments** We thank the members of the research group for their help and useful comments on the manuscript. Special thanks to Shi Yan for supplying the *N*-glycan with Gal $\beta$ 1,4Fuc epitope, to Rhiannon Stanton for some HPLC analysis, and to Katharina Paschinger for the help with the MALDI-TOF/TOF MS and for critically reading the manuscript. We would also like to thank Hans Marx for his assistance during the GOS HPLC assays, Michael Maurer for his assistance with fermentations, and Barbara Amon from the Agrana Stärke AG for providing the GOS samples. This work was funded by the Austrian Science Fund (FWF) [TRP127 to D.R.].

**Conflict of interest** The authors declare that they have no conflict of interest.

**Open Access** This article is distributed under the terms of the Creative Commons Attribution License which permits any use, distribution, and reproduction in any medium, provided the original author(s) and the source are credited.

## References

- Albayrak N, Yang ST (2002) Production of galacto-oligosaccharides from lactose by *Aspergillus oryzae*  $\beta$ -galactosidase immobilized on cotton cloth. *Biotechnol Bioeng* 77:8–19. doi:10.1002/Bit.1195
- Altmann F, Schweiszer S, Weber C (1995) Kinetic comparison of peptide: *N*-glycosidases F and A reveals several differences in substrate specificity. *Glycoconj J* 12:84–93. doi:10.1007/Bf00731873
- Arakawa M, Ogata S, Muramatsu T, Kobata A (1974)  $\beta$ -Galactosidases from jack bean meal and almond emulsin. Application for the enzymatic distinction of Gal $\beta$ 1 $\rightarrow$ 4GlcNAc and Gal $\beta$ 1 $\rightarrow$ 3GlcNAc linkages. *J Biochem* 75:707–714
- Baumann K, Maurer M, Dragosits M, Cos O, Ferrer P, Mattanovich D (2008) Hypoxic fed-batch cultivation of *Pichia pastoris* increases specific and volumetric productivity of recombinant proteins. *Biotechnol Bioeng* 100:177–183. doi:10.1002/bit.21763
- Cantarel BL, Coutinho PM, Rancurel C, Bernard T, Lombard V, Henrissat B (2009) The Carbohydrate-Active EnZymes database (CAZy): an expert resource for Glycogenomics. *Nucleic Acids Res* 37:D233–D238. doi:10.1093/nar/gkn663
- Díaz M, Pedregosa AM, de Lucas JR, Torralba S, Monistrol IF, Laborda F (1996) Purification and properties of  $\beta$ -galactosidase from *Aspergillus nidulans*. *Microbiologia* 12:585–592
- Dickson RC, Markin JS (1978) Molecular cloning and expression in *E. coli* of a yeast gene coding for  $\beta$ -galactosidase. *Cell* 15:123–130. doi:10.1016/0092-8674(78)90088-0
- Distler JJ, Jourdan GW (1973) The purification and properties of  $\beta$ -galactosidase from bovine testes. *J Biol Chem* 248:6772–6780
- Dixon M (1953) The determination of enzyme inhibitor constants. *Biochem J* 55:170–171
- Fang Y, Xu W, Wu J, Xu ZK (2012) Enzymatic transglycosylation of PEG brushes by  $\beta$ -galactosidase. *Chem Commun (Camb)* 48:11208–11210. doi:10.1039/c2cc35369e
- Forsee WT, Palmer CF, Schutzbach JS (1989) Purification and characterization of an  $\alpha$ -1,2-mannosidase involved in processing asparagine-linked oligosaccharides. *J Biol Chem* 264:3869–3876
- Gasser B, Dragosits M, Mattanovich D (2010) Engineering of biotin-prototrophy in *Pichia pastoris* for robust production processes. *Metab Eng* 12:573–580. doi:10.1016/j.ymben.2010.07.002
- Ghosalkar A, Sahai V, Srivastava A (2008) Secretory expression of interferon- $\alpha$  2b in recombinant *Pichia pastoris* using three different secretion signals. *Protein Expr Purif* 60:103–109. doi:10.1016/j.pep.2008.02.006
- Guerrero C, Vera C, Illanes A (2013) Optimisation of synthesis of oligosaccharides derived from lactulose (fructosyl-galacto-oligosaccharides) with  $\beta$ -galactosidases of different origin. *Food Chem* 138:2225–2232. doi:10.1016/j.foodchem.2012.10.128
- Hamilton SR, Davidson RC, Sethuraman N, Nett JH, Jiang Y, Rios S, Bobrowicz P, Stadheim TA, Li H, Choi BK, Hopkins D, Wischniewski H, Roser J, Mitchell T, Strawbridge RR, Hoopes J, Wildt S, Gerngross TU (2006) Humanization of yeast to produce complex terminally sialylated glycoproteins. *Science* 313:1441–1443. doi:10.1126/science.1130256
- Henrissat B, Bairoch A (1996) Updating the sequence-based classification of glycosyl hydrolases. *Biochem J* 316:695–696
- Homouz D, Perham M, Samiotakis A, Cheung MS, Wittung-Stafshede P (2008) Crowded, cell-like environment induces shape changes in aspherical protein. *Proc Natl Acad Sci U S A* 105:11754–11759. doi:10.1073/pnas.0803672105
- Hsu CA, Yu RC, Chou CC (2005) Production of  $\beta$ -galactosidase by *Bifidobacteria* as influenced by various culture conditions. *Int J Food Microbiol* 104:197–206. doi:10.1016/j.ijfoodmicro.2005.02.010
- Hu X, Robin S, O'Connell S, Walsh G, Wall JG (2010) Engineering of a fungal  $\beta$ -galactosidase to remove product inhibition by galactose. *Appl Microbiol Biotechnol* 87:1773–1782. doi:10.1007/s00253-010-2662-8
- Hughes RC, Jeanloz RW (1964) The extracellular glycosidases of *Diplococcus pneumoniae*. I. Purification and properties of a neuraminidase and a  $\beta$ -galactosidase. Action on the  $\alpha$ -1-acid glycoprotein of human plasma. *Biochemistry* 3:1535–1543
- Hung MN, Xia Z, Hu NT, Lee BH (2001) Molecular and biochemical analysis of two  $\beta$ -galactosidases from *Bifidobacterium infantis* HL96. *Appl Environ Microbiol* 67:4256–4263. doi:10.1128/Aem.67.9.4256-4263.2001
- Husain Q (2010)  $\beta$  Galactosidases and their potential applications: a review. *Crit Rev Biotechnol* 30:41–62. doi:10.3109/07388550903330497
- Invitrogen (2010) *Pichia* expression kit. For expression of recombinant proteins in *Pichia pastoris*. User manual. Available at [http://tools.invitrogen.com/content/sfs/manuals/pich\\_man.pdf](http://tools.invitrogen.com/content/sfs/manuals/pich_man.pdf)
- Iskratsch T, Braun A, Paschinger K, Wilson IBH (2009) Specificity analysis of lectins and antibodies using remodeled glycoproteins. *Anal Biochem* 386:133–146. doi:10.1016/j.ab.2008.12.005
- Iwasaki K, Nakajima M, Nakao S (1996) Galacto-oligosaccharide production from lactose by an enzymic batch reaction using  $\beta$ -galactosidase. *Process Biochem* 31:69–76. doi:10.1016/0032-9592(94)00067-0
- Kim YS, Yeom SJ, Oh DK (2011) Reduction of galactose inhibition via the mutation of  $\beta$ -galactosidase from *Caldicellulosiruptor saccharolyticus* for lactose hydrolysis. *Biotechnol Lett* 33:353–358. doi:10.1007/s10529-010-0445-z
- Klein MP, Fallavena LP, Schöffler J, Ayub MA, Rodrigues RC, Ninow JL, Hertz PF (2013) High stability of immobilized  $\beta$ -D-galactosidase for lactose hydrolysis and galactooligosaccharides synthesis. *Carbohydr Polym* 95:465–470. doi:10.1016/j.carbpol.2013.02.044
- Kumar V, Ramakrishnan S, Teeri TT, Knowles JK, Hartley BS (1992) *Saccharomyces cerevisiae* cells secreting an *Aspergillus niger*  $\beta$ -galactosidase grow on whey permeate. *Biotechnology (N Y)* 10:82–85. doi:10.1038/Nbt0192-82
- Li SC, Mazzotta MY, Chien SF, Li YT (1975) Isolation and characterization of jack bean  $\beta$ -galactosidase. *J Biol Chem* 250:6786–6791
- Liu H, Liu J, Tan B, Zhou F, Qin Y, Yang R (2012) Covalent immobilization of *Kluyveromyces fragilis*  $\beta$ -galactosidase on magnetic nanosized epoxy support for synthesis of galacto-oligosaccharide. *Bioprocess Biosyst Eng* 35:1287–1295. doi:10.1007/s00449-012-0716-2
- Macauley-Patrick S, Fazenda M, McNeil B, Harvey L (2005) Heterologous protein production using the *Pichia pastoris* expression system. *Yeast* 22:249–270. doi:10.1002/yea.1208
- Maksimainen MM, Lampio A, Mertanen M, Turunen O, Rouvinen J (2013) The crystal structure of acidic  $\beta$ -galactosidase from *Aspergillus oryzae*. *Int J Biol Macromol* 60:109–115. doi:10.1016/j.ijbiomac.2013.05.003
- Maurer M, Kühleitner M, Gasser B, Mattanovich D (2006) Versatile modeling and optimization of fed batch processes for the production of secreted heterologous proteins with *Pichia pastoris*. *Microb Cell Fact* 5:37. doi:10.1186/1475-2859-5-37
- McIlvaine T (1921) A buffer solution for colorimetric comparison. *J Biol Chem* 49:183–186
- McKay M (1991) Extracellular  $\beta$ -galactosidase production during growth of filamentous fungi on polygalacturonic acid. *Lett Appl Microbiol* 12:75–77. doi:10.1111/j.1472-765X.1991.tb00508.x
- Mucha J, Domlatil J, Lochnit G, Rendić D, Paschinger K, Hinterkömer G, Hofinger A, Kosma P, Wilson IBH (2004) The *Drosophila melanogaster* homologue of the human histo-blood group Pk gene encodes a glycolipid-modifying  $\alpha$ 1,4-N-acetylgalactosaminyltransferase. *Biochem J* 382:67–74. doi:10.1042/BJ20040535
- O'Connell S, Walsh G (2008) Application relevant studies of fungal  $\beta$ -galactosidases with potential application in the alleviation of lactose intolerance. *Appl Biochem Biotechnol* 149:129–138. doi:10.1007/s12010-007-8098-7
- O'Connell S, Walsh G (2010) A novel acid-stable, acid-active  $\beta$ -galactosidase potentially suited to the alleviation of lactose intolerance.

- Appl Microbiol Biotechnol 86:517–524. doi:10.1007/s00253-009-2270-7
- Oliveira C, Guimarães PM, Domingues L (2011) Recombinant microbial systems for improved  $\beta$ -galactosidase production and biotechnological applications. *Biotechnol Adv* 29:600–609. doi:10.1016/j.biotechadv.2011.03.008
- Pabst M, Bondili JS, Stadlmann J, Mach L, Altmann F (2007) Mass+ retention time=structure: a strategy for the analysis of *N*-glycans by carbon LC-ESI-MS and its application to fibrin *N*-glycans. *Anal Chem* 79:5051–5057. doi:10.1021/ac070363i
- Pal Y, Khushoo A, Mukherjee KJ (2006) Process optimization of constitutive human granulocyte–macrophage colony-stimulating factor (hGM-CSF) expression in *Pichia pastoris* fed-batch culture. *Appl Microbiol Biotechnol* 69:650–657. doi:10.1007/s00253-005-0018-6
- Palai T, Mitra S, Bhattacharya PK (2012) Kinetics and design relation for enzymatic conversion of lactose into galacto-oligosaccharides using commercial grade  $\beta$ -galactosidase. *J Biosci Bioeng* 114:418–423. doi:10.1016/j.jbiosc.2012.05.012
- Park AR, Oh DK (2010) Galacto-oligosaccharide production using microbial  $\beta$ -galactosidase: current state and perspectives. *Appl Microbiol Biotechnol* 85:1279–1286. doi:10.1007/s00253-009-2356-2
- Paschinger K, Gonzalez-Sapienza GG, Wilson IBH (2012a) Mass spectrometric analysis of the immunodominant glycan epitope of *Echinococcus granulosus* antigen Ag5. *Int J Parasitol* 42:279–285. doi:10.1016/j.ijpara.2012.01.002
- Paschinger K, Hykollari A, Razzazi-Fazeli E, Greenwell P, Leitsch D, Walochnik J, Wilson IBH (2012b) The *N*-glycans of *Trichomonas vaginalis* contain variable core and antennal modifications. *Glycobiology* 22:300–313. doi:10.1093/glycob/cwr149
- Pisanelli I, Kujawa M, Gschnitzer D, Spadiut O, Seiboth B, Peterbauer C (2010) Heterologous expression of an *Agaricus meleagris* pyranose dehydrogenase-encoding gene in *Aspergillus* spp. and characterization of the recombinant enzyme. *Appl Microbiol Biotechnol* 86:599–606. doi:10.1007/s00253-009-2308-x
- Scheckermann C, Wagner F, Fischer L (1997) Galactosylation of antibiotics using the  $\beta$ -galactosidase from *Aspergillus oryzae*. *Enzyme Microb Technol* 20:629–634. doi:10.1016/S0141-0229(96)00211-6
- Sen S, Ray L, Chattopadhyay P (2012) Production, purification, immobilization, and characterization of a thermostable  $\beta$ -galactosidase from *Aspergillus alliaceus*. *Appl Biochem Biotechnol* 167:1938–1953. doi:10.1007/s12010-012-9732-6
- Shen VK, Cheung JK, Errington JR, Truskett TM (2009) Insights into crowding effects on protein stability from a coarse-grained model. *J Biomech Eng* 131:071002. doi:10.1115/1.3127259
- Shim JH, Chen HM, Rich JR, Goddard-Borger ED, Withers SG (2012) Directed evolution of a  $\beta$ -glycosidase from *Agrobacterium* sp. to enhance its glycosynthase activity toward C3-modified donor sugars. *Protein Eng Des Sel* 25:465–472. doi:10.1093/protein/gzso45
- Sykes DE, Abbas SA, Barlow JJ, Matta KL (1983) Substrate specificity and other properties of the  $\beta$ -D-galactosidase from *Aspergillus niger*. *Carbohydr Res* 116:127–138. doi:10.1016/S0008-6215(00)90960-1
- Takeuchi T, Sugiura K, Nishiyama K, Takahashi H, Natsugari H, Arata Y, Natsuka S, Kasai K (2011)  $\beta$ -Galactosidases from jack bean and *Streptococcus* have different cleaving abilities towards fucose-containing sugars. *Biol Pharm Bull* 34:567–569
- Tanaka Y, Kagamiishi A, Kiuchi A, Horiuchi T (1975) Purification and properties of  $\beta$ -galactosidase from *Aspergillus oryzae*. *J Biochem* 77:241–247
- Titz A, Buttschi A, Henrissat B, Fan YY, Hennet T, Razzazi-Fazeli E, Hengartner MO, Wilson IBH, Künzler M, Aebi M (2009) Molecular basis for galactosylation of core fucose residues in invertebrates: identification of *Caenorhabditis elegans* *N*-glycan core  $\alpha$ 1,6-fucoside  $\beta$ 1,4-galactosyltransferase GALT-1 as a member of a novel glycosyltransferase family. *J Biol Chem* 284:36223–36233. doi:10.1074/jbc.M109.058354
- Torres R, Mateo C, Fernández-Lorente G, Ortiz C, Fuentes M, Palomo JM, Guisan JM, Fernández-Lafuente R (2003) A novel heterofunctional epoxy-amino sepabeads for a new enzyme immobilization protocol: immobilization-stabilization of  $\beta$ -galactosidase from *Aspergillus oryzae*. *Biotechnol Prog* 19:1056–1060. doi:10.1021/bp025771g
- van den Brink J, de Vries RP (2011) Fungal enzyme sets for plant polysaccharide degradation. *Appl Microbiol Biotechnol* 91:1477–1492. doi:10.1007/s00253-011-3473-2
- Vera C, Guerrero C, Illanes A (2011) Determination of the transgalactosylation activity of *Aspergillus oryzae*  $\beta$ -galactosidase: effect of pH, temperature, and galactose and glucose concentrations. *Carbohydr Res* 346:745–752. doi:10.1016/j.carres.2011.01.030
- Wang H, Luo H, Bai Y, Wang Y, Yang P, Shi P, Zhang W, Fan Y, Yao B (2009) An acidophilic  $\beta$ -galactosidase from *Bispora* sp. MEY-1 with high lactose hydrolytic activity under simulated gastric conditions. *J Agric Food Chem* 57:5535–5541. doi:10.1021/jf900369e
- Xiong AS, Peng RH, Zhuang J, Li X, Xue Y, Liu JG, Gao F, Cai B, Chen JM, Yao QH (2007) Directed evolution of a  $\beta$ -galactosidase from *Pyrococcus woesei* resulting in increased thermostable beta-glucuronidase activity. *Appl Microbiol Biotechnol* 77:569–578. doi:10.1007/s00253-007-1182-7
- Yan S, Bleuler-Martinez S, Plaza DF, Künzler M, Aebi M, Joachim A, Razzazi-Fazeli E, Jantsch V, Geyer R, Wilson IBH, Paschinger K (2012) Galactosylated fucose epitopes in nematodes: increased expression in a *Caenorhabditis* mutant associated with altered lectin sensitivity and occurrence in parasitic species. *J Biol Chem* 287:28276–28290. doi:10.1074/jbc.M112.353128
- Zeleny R, Altmann F, Praznik W (1997) A capillary electrophoretic study on the specificity of  $\beta$ -galactosidases from *Aspergillus oryzae*, *Escherichia coli*, *Streptococcus pneumoniae*, and *Canavalia ensiformis* (jack bean). *Anal Biochem* 246:96–101. doi:10.1006/abio.1996.9973
- Zhang JH, Dawes G, Stemmer WP (1997a) Directed evolution of a fucosidase from a galactosidase by DNA shuffling and screening. *Proc Natl Acad Sci U S A* 94:4504–4509. doi:10.1073/pnas.94.9.4504
- Zhang Y, Iwasa T, Tsuda M, Kobata A, Takasaki S (1997b) A novel monoantennary complex-type sugar chain found in octopus rhodopsin: occurrence of the Gal  $\beta$ 1 $\rightarrow$ 4Fuc group linked to the proximal *N*-acetylglucosamine residue of the trimannosyl core. *Glycobiology* 7:1153–1158. doi:10.1093/glycob/7.8.1153
- Zhang S, Gao S, Gao G (2010) Immobilization of  $\beta$ -galactosidase onto magnetic beads. *Appl Biochem Biotechnol* 160:1386–1393. doi:10.1007/s12010-009-8600-5