

MIDDLE EUROPEAN PLANNING SEMINAR

2013. 05. 17.

FELDKIRCH, AUSTRIA

Group 6

(Members)

Jaime Llorente

Eduardo Lopez

Tamás Halmos

Zoltán Budai

Premysl Mucha

Jan Silar

Contents

1. Description of the planning area
2. Problems
3. Solution tree
- 4.1 Solution A
- 4.2 Solution B
5. Summary

Description of the planning area



Problems I.

(increasing traffic volume, 2022)



Problems II.

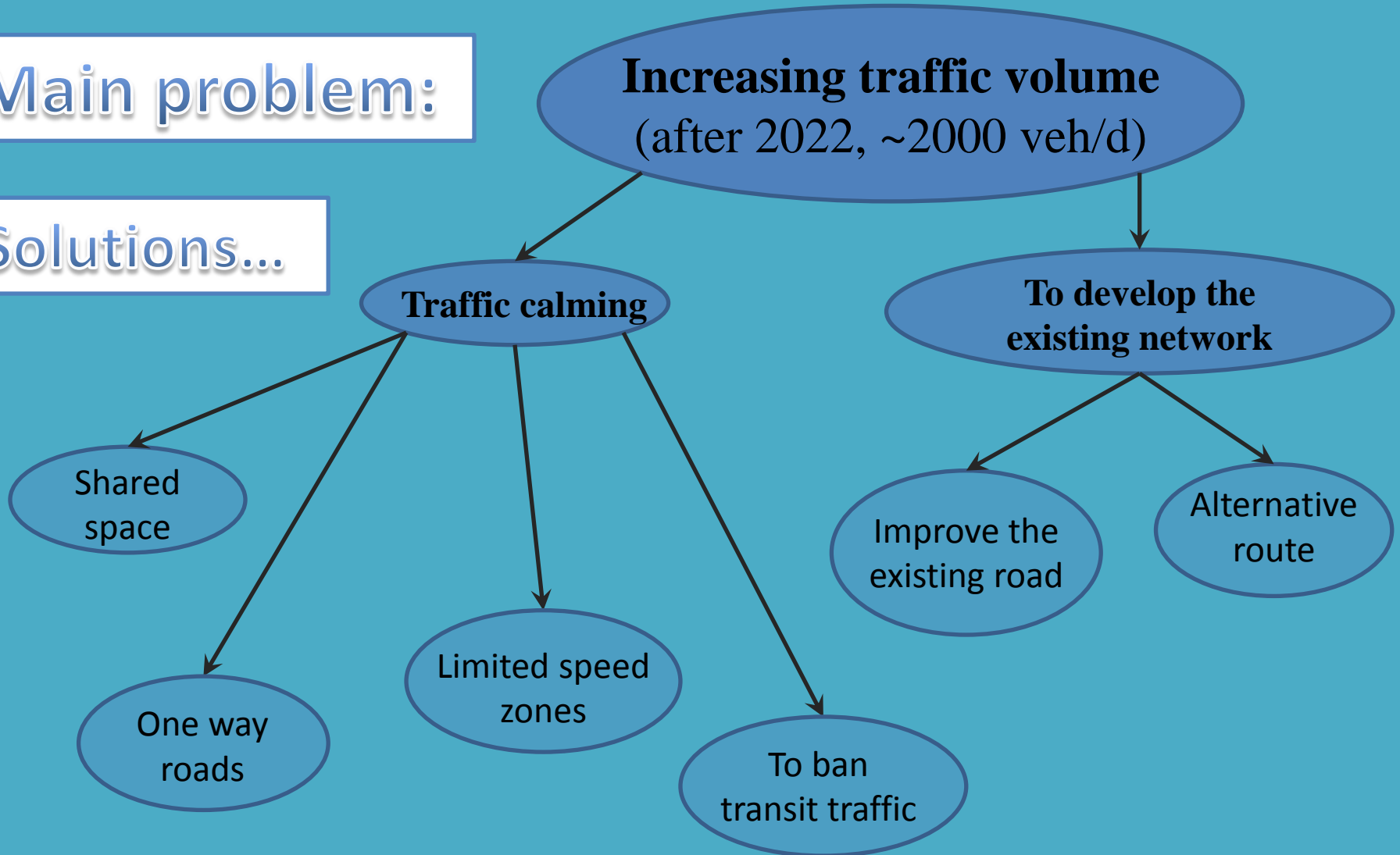
(location of the new railway stop, Tosters)



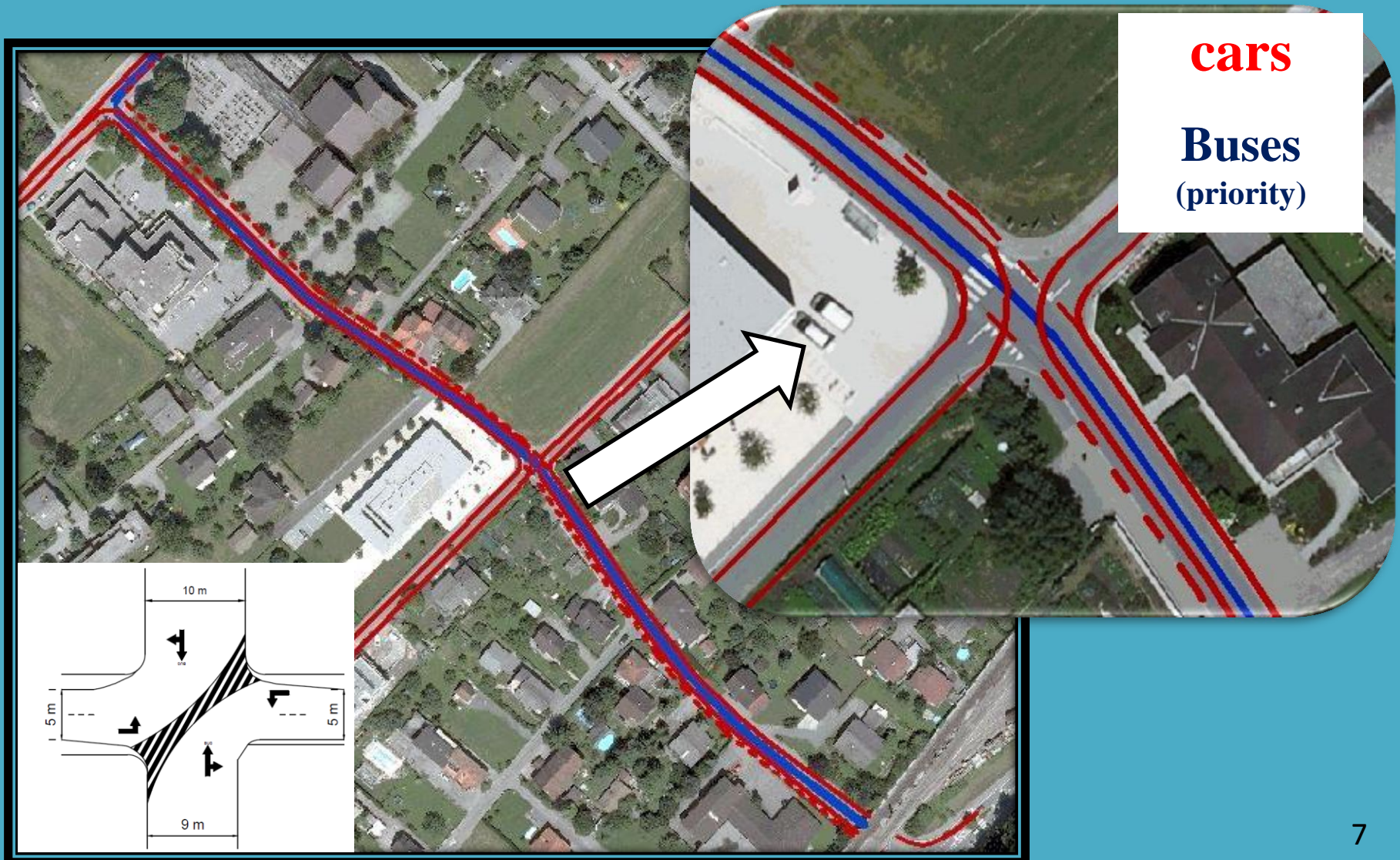
Solution tree

Main problem:

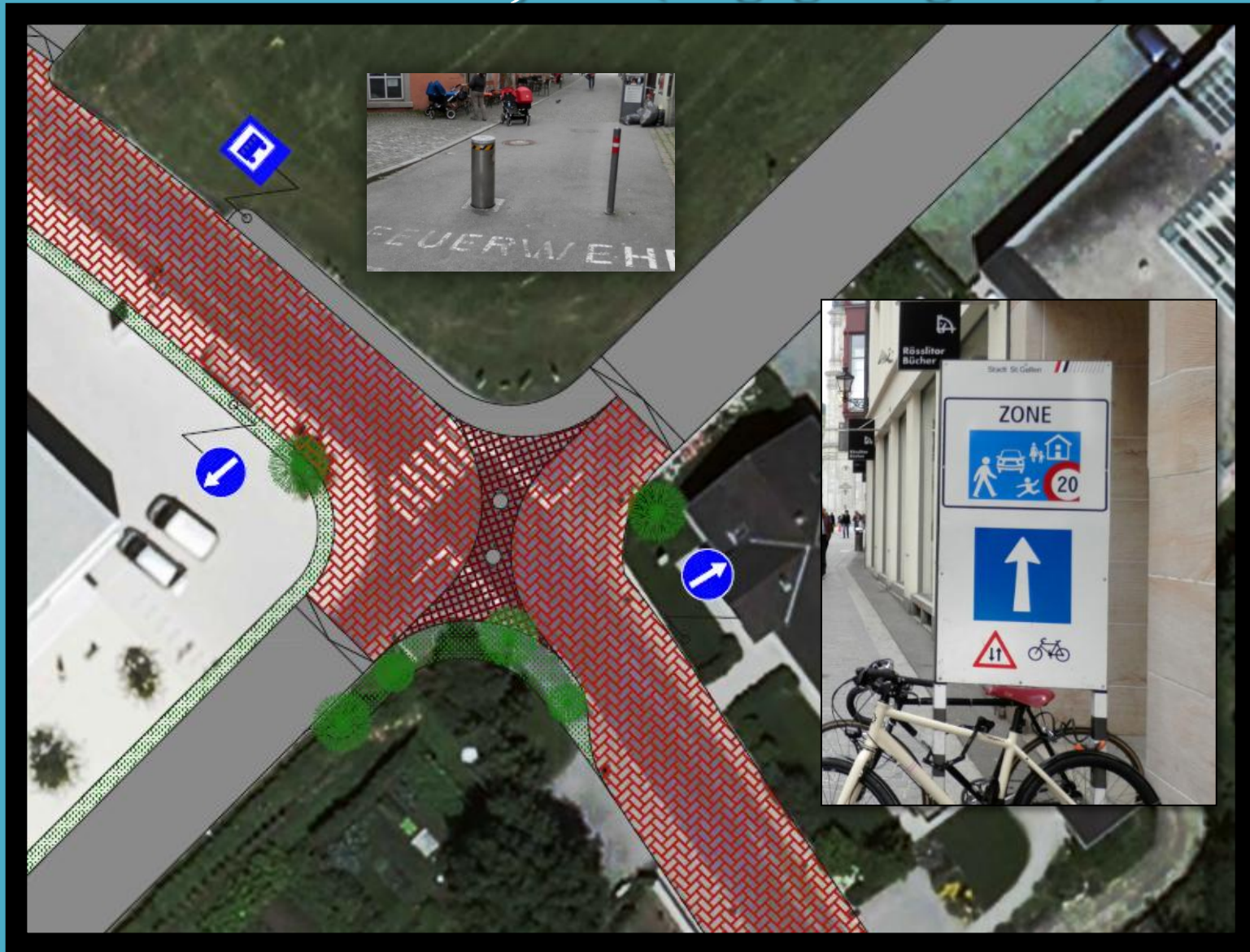
Solutions...



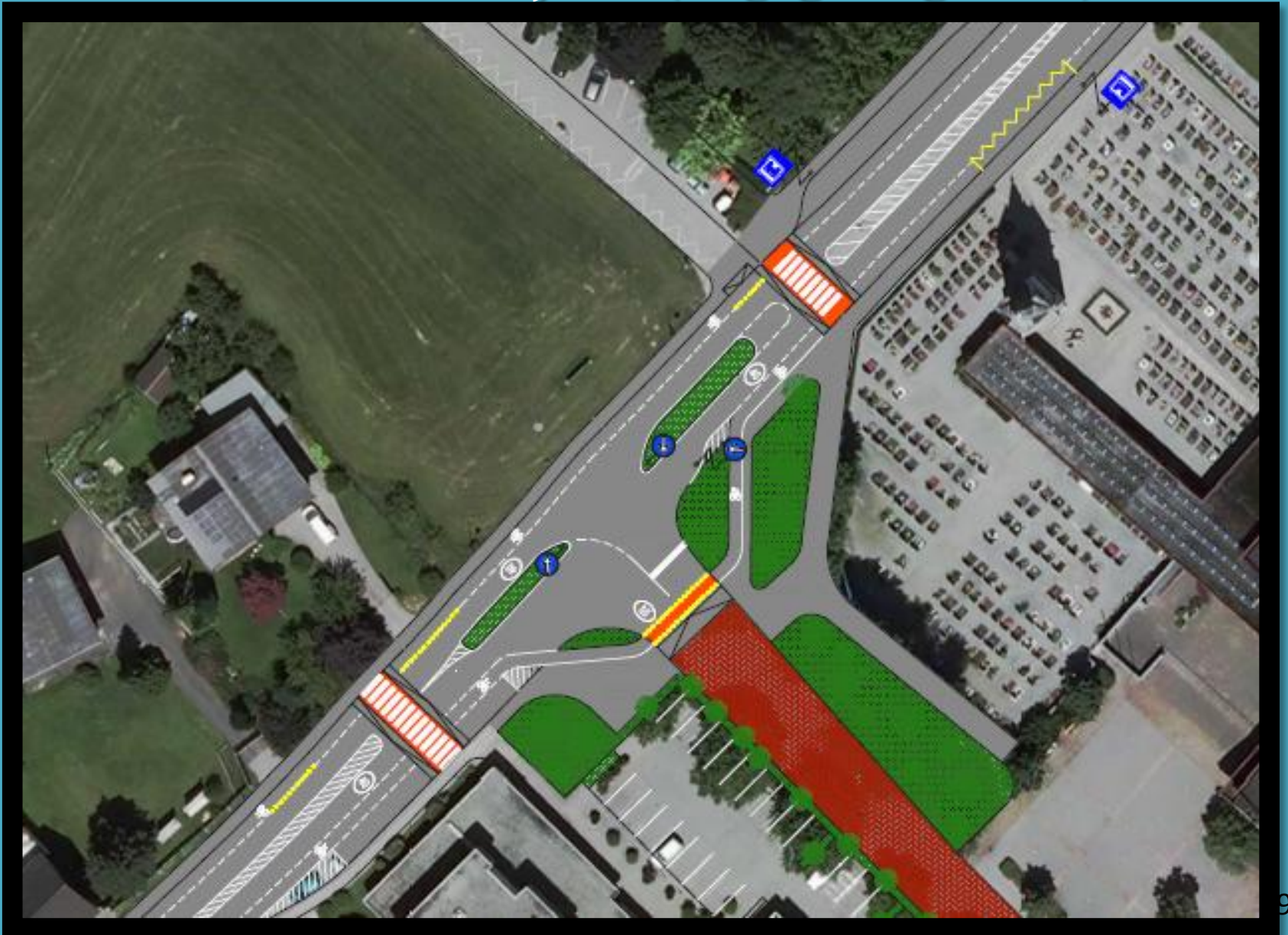
Solution ,A' (Begegnungszone)



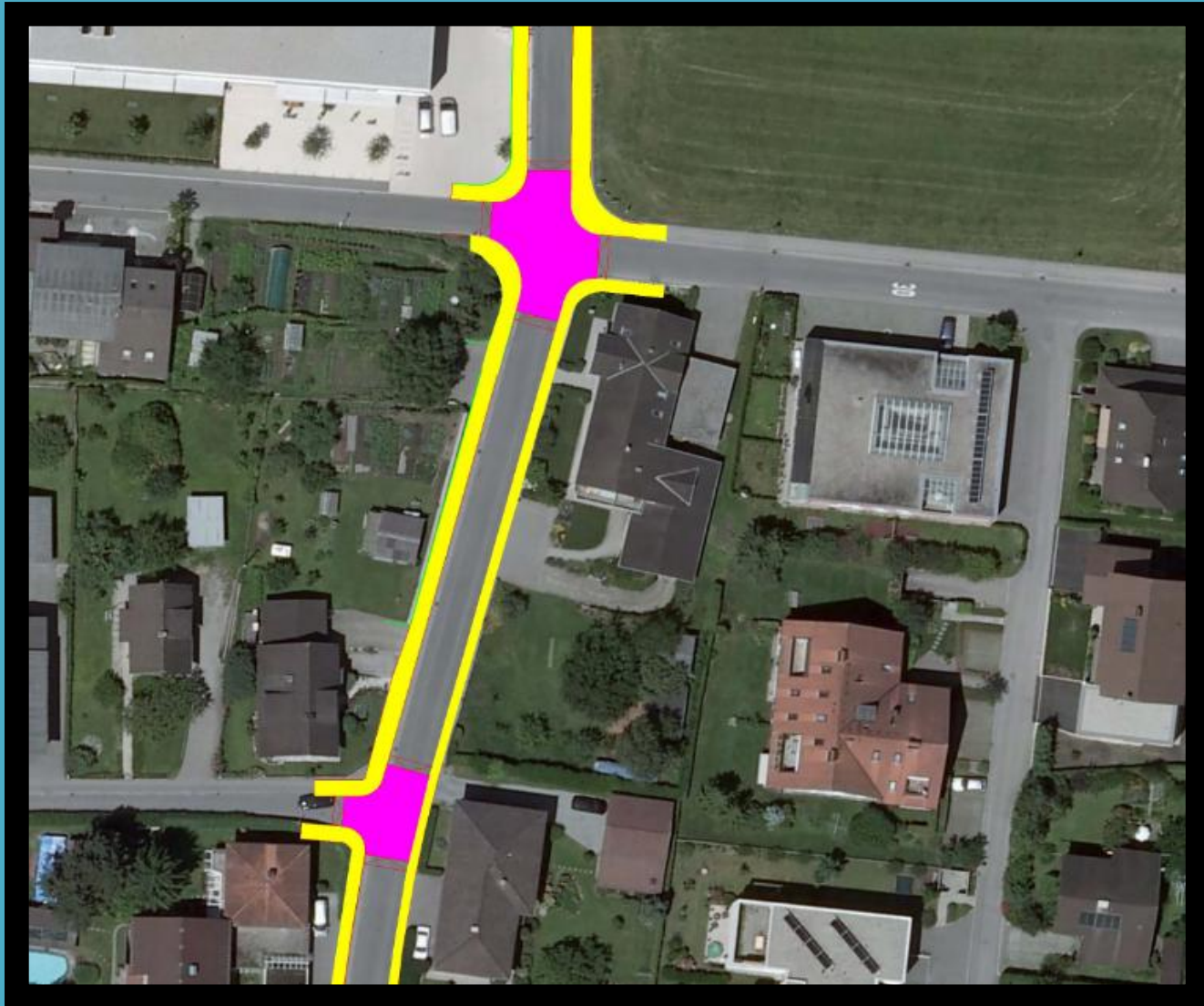
Solution ‚A‘ (Begegnungszone)



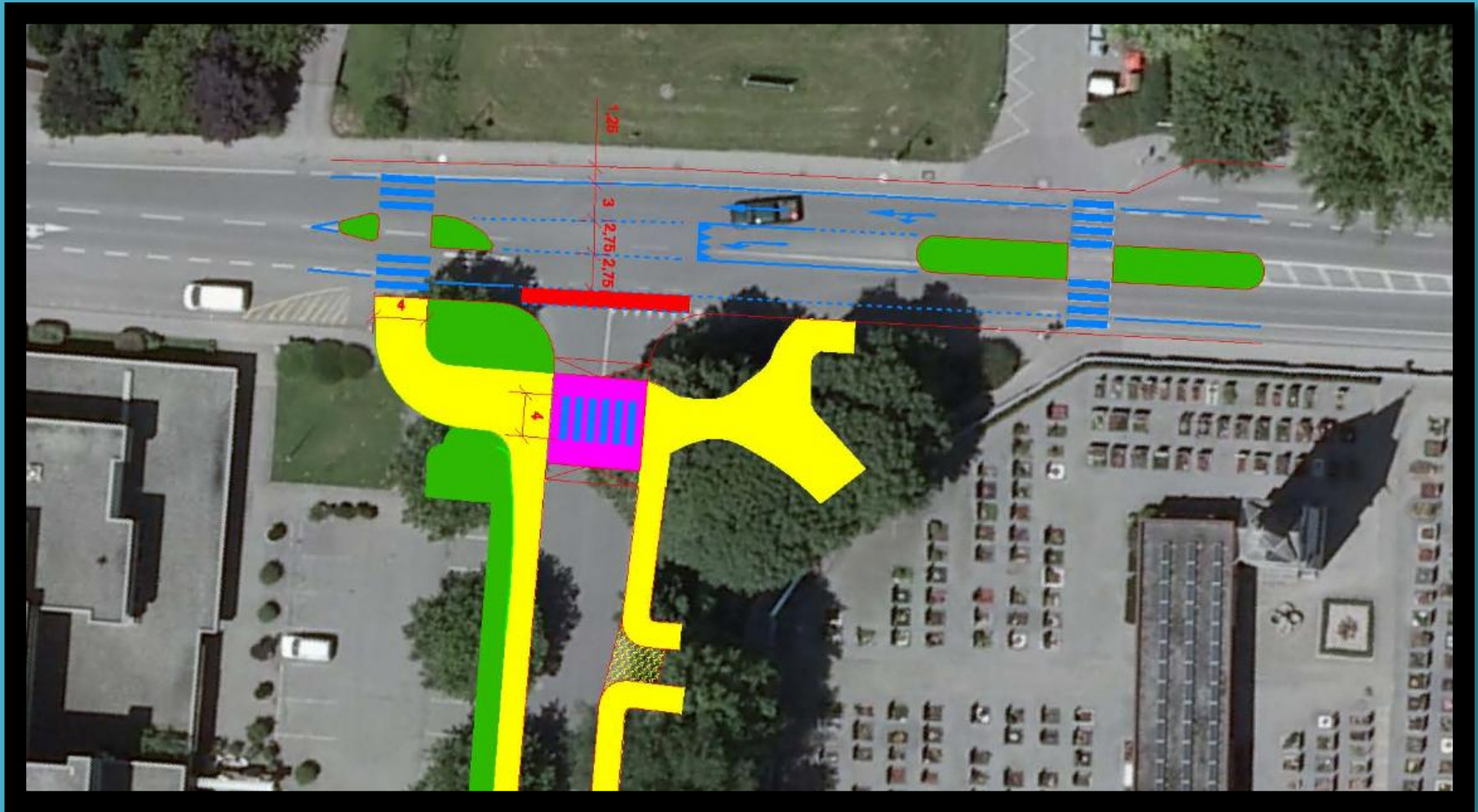
Solution „A’ (Begegnungszone)



Solution ,B' (elevated intersections)

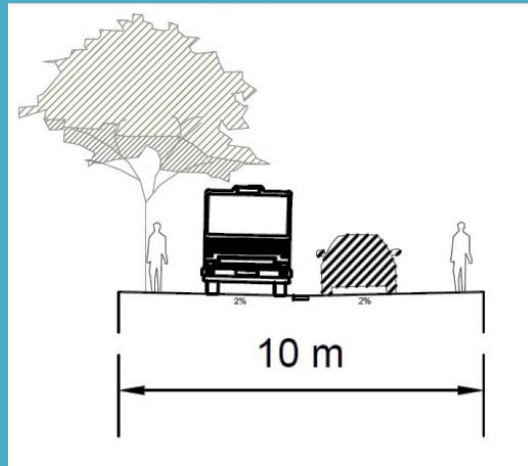


Solution ,B' (elevated crossings)



Planned cross sections

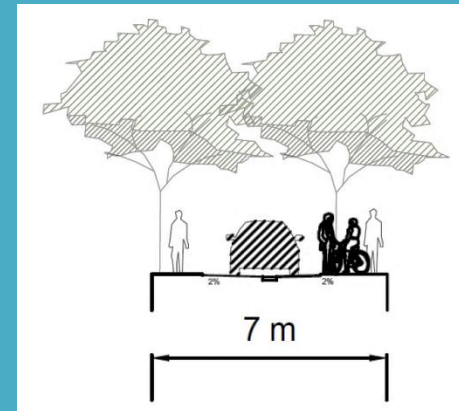
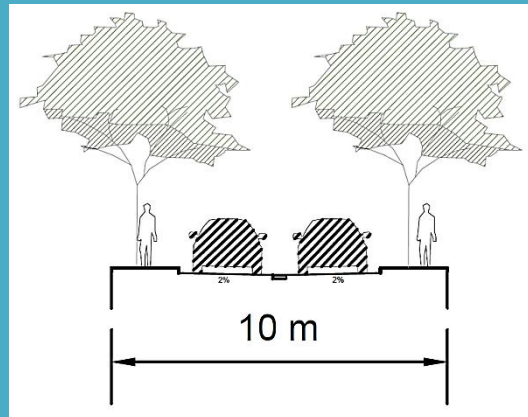
version
A



„Begegnungszone“




version
B



Summary

- Increasing traffic volume
- Traffic calming measures
 - „Begegnungszone”
 - Speed limiting
 - Elevated surface
- Bike and Ride location

A group of six people (three men and three women) are standing in a room with wood-paneled walls. In the background, there is a large, ornate circular emblem or seal on the wall, featuring a central shield and various symbols. The text is overlaid on the image in a large, bold, black font.

Thank you for your attention!
Danke für die Aufmerksamkeit!
Dekujeme za Vasi pozornost!
Köszönjük a figyelmet!
Gracias por su atención!