

BÄRENKREUZUNG *(Task 2)*

Rearrangement of the central intersection



*Adam Kapcsos
Andras Körizs
Guillermo Gonzalez
Thomas Heinzle*



GOALS

↑ *Pedestrian Traffic*

↓ *Car Traffic*

↑ *Cycling*

↑ *Public Transport (Bus)*



PEDESTRIAN TRAFFIC

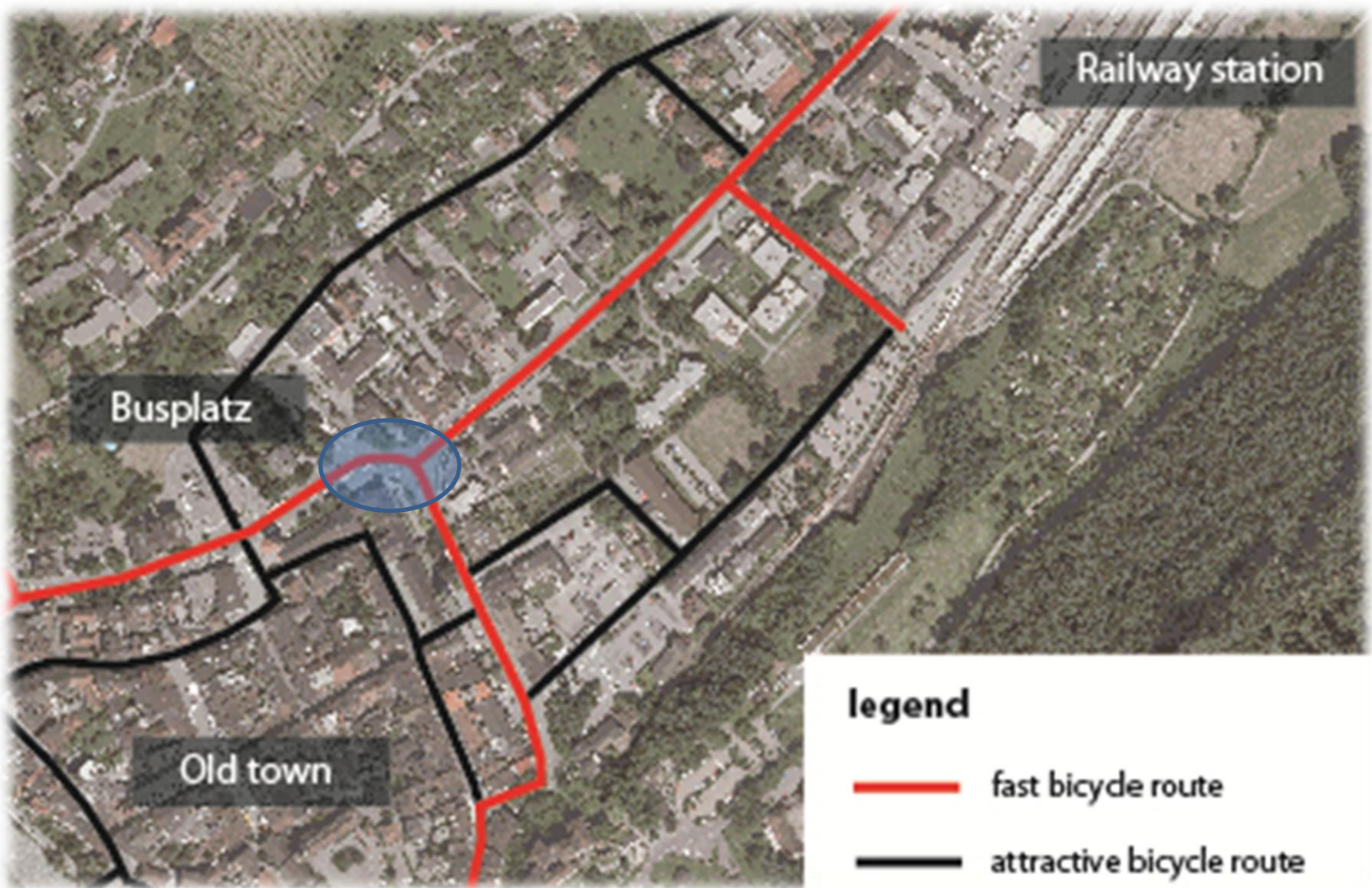


*Bärenkreuzung
(Feldkirch)*



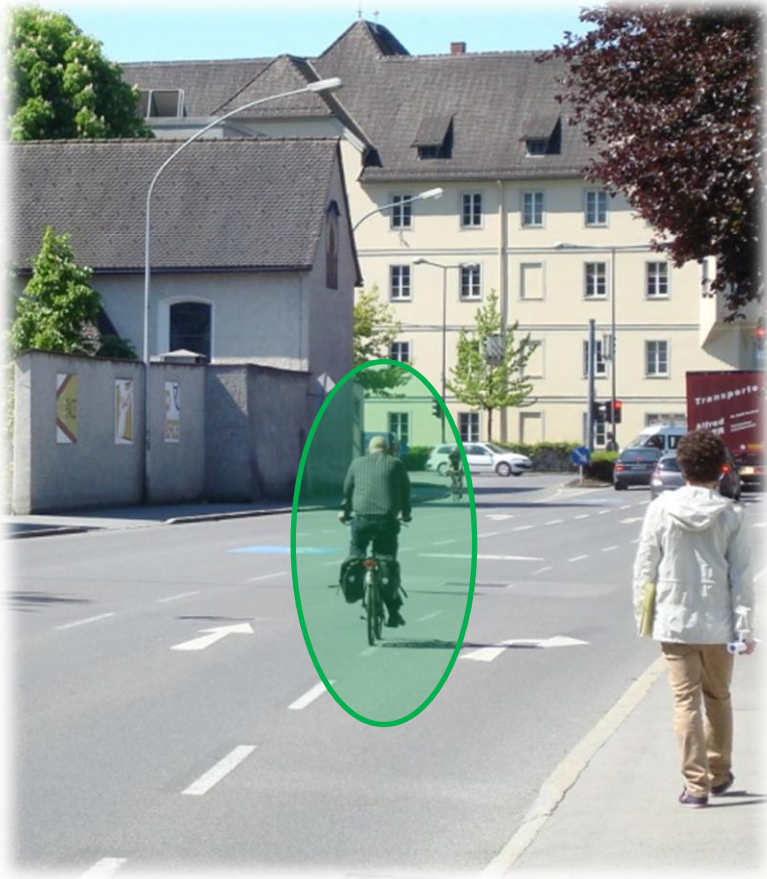
*Babenberger Passage
(Vienna)*



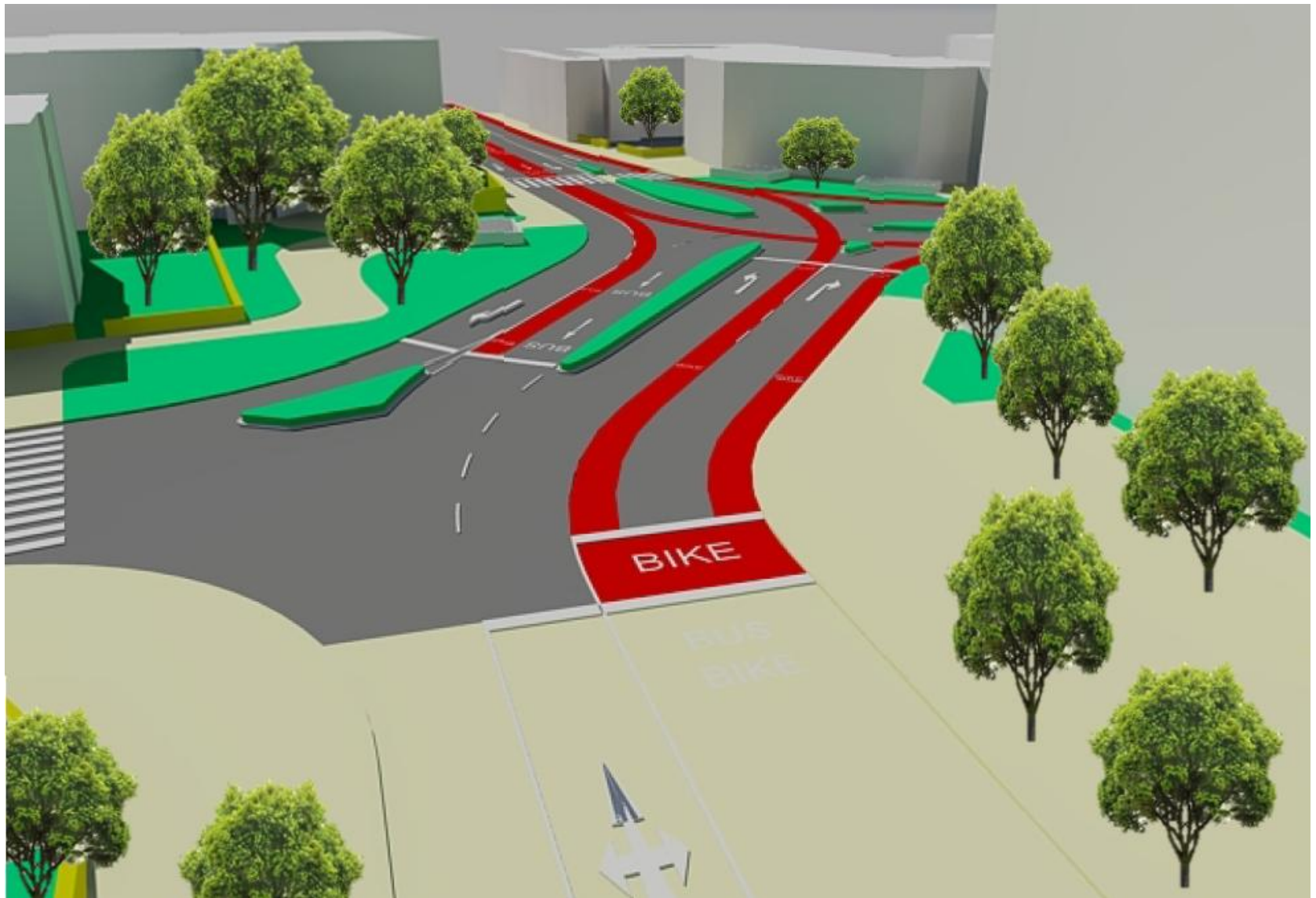


Bicycle route network (Feldkirch, City Center)

CYCLING



CYCLING (BEGEGNUNGSZONE)



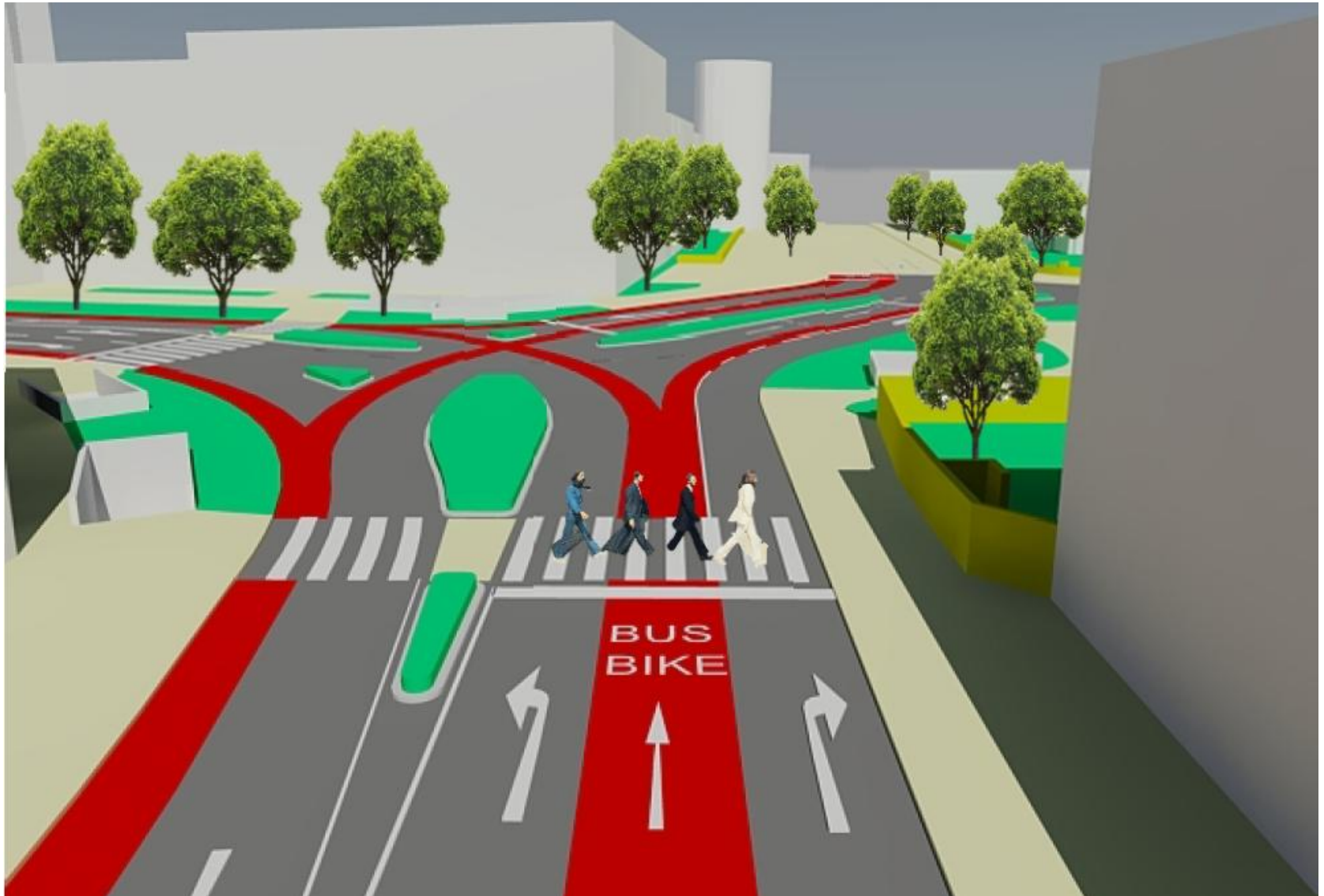
CYCLING – TURNING LEFT (SCHLOSSGRABEN)



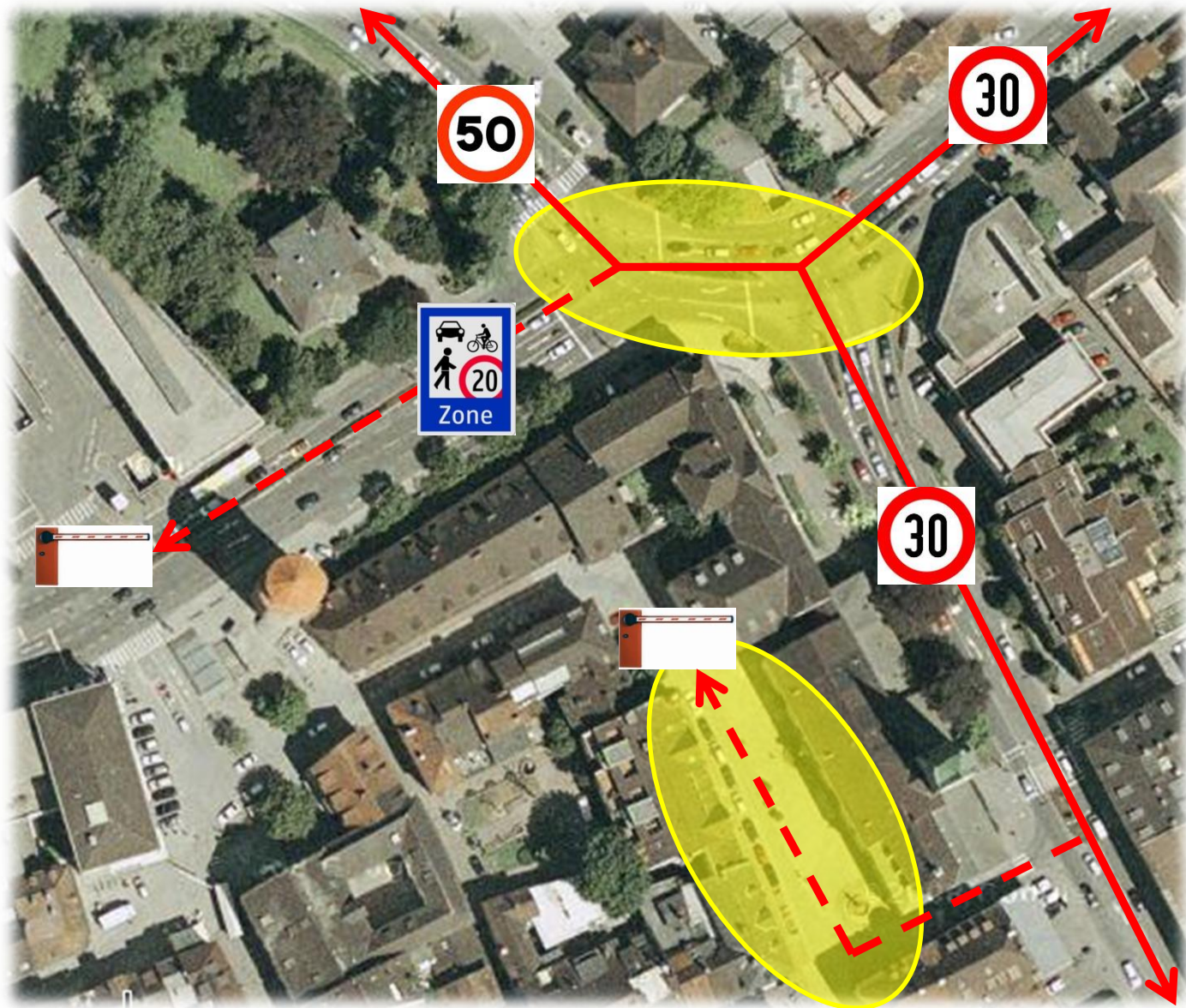
PUBLIC TRANSPORT (BUS)



BUS & BICYCLE LANE (BAHNHOFSTRASSE)



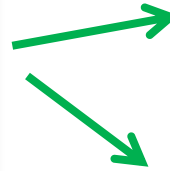
CAR TRAFFIC



REARRANGEMENT OF DOMPLATZ



REARRANGEMENT OF DOMPLATZ



SIGNAL PLAN (2025)



Phase 1



Phase 2



Phase 3

GREEN ELEMENTS



Chicago, USA



Vienna, Austria



Madrid, Spain

- *Improvement of situation for pedestrians, cyclists & public transport*
- *Reduction of car traffic in the city centre*

- *Reduction of capacity for car traffic of ~ 10 %
(But: Longer signal period can increase capacity)*

- *More green areas*
- *Less noise & air pollution*
- *Higher safety*
- *Better mobility*

- *Higher standard of living in & higher attractiveness of the city centre*

REGAINING URBAN SPACE FOR PEOPLE

***THANK YOU
for your kind
attention!***

ATTACHMENT

SIGNAL PLAN (2013)



Phase 1



Phase 2

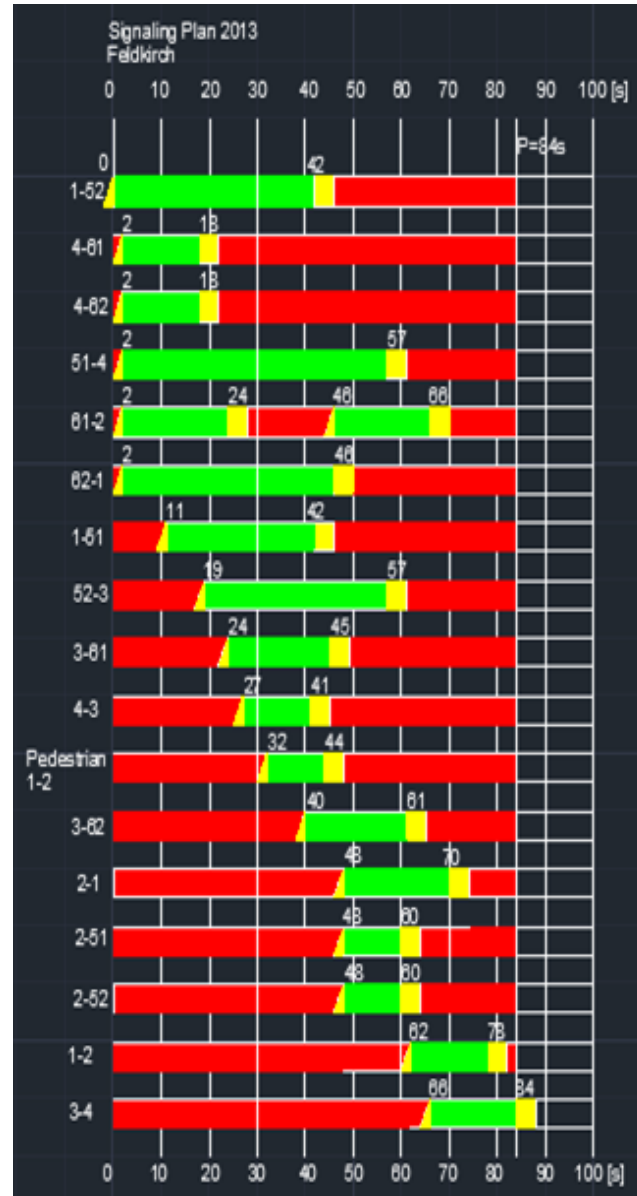


Phase 3

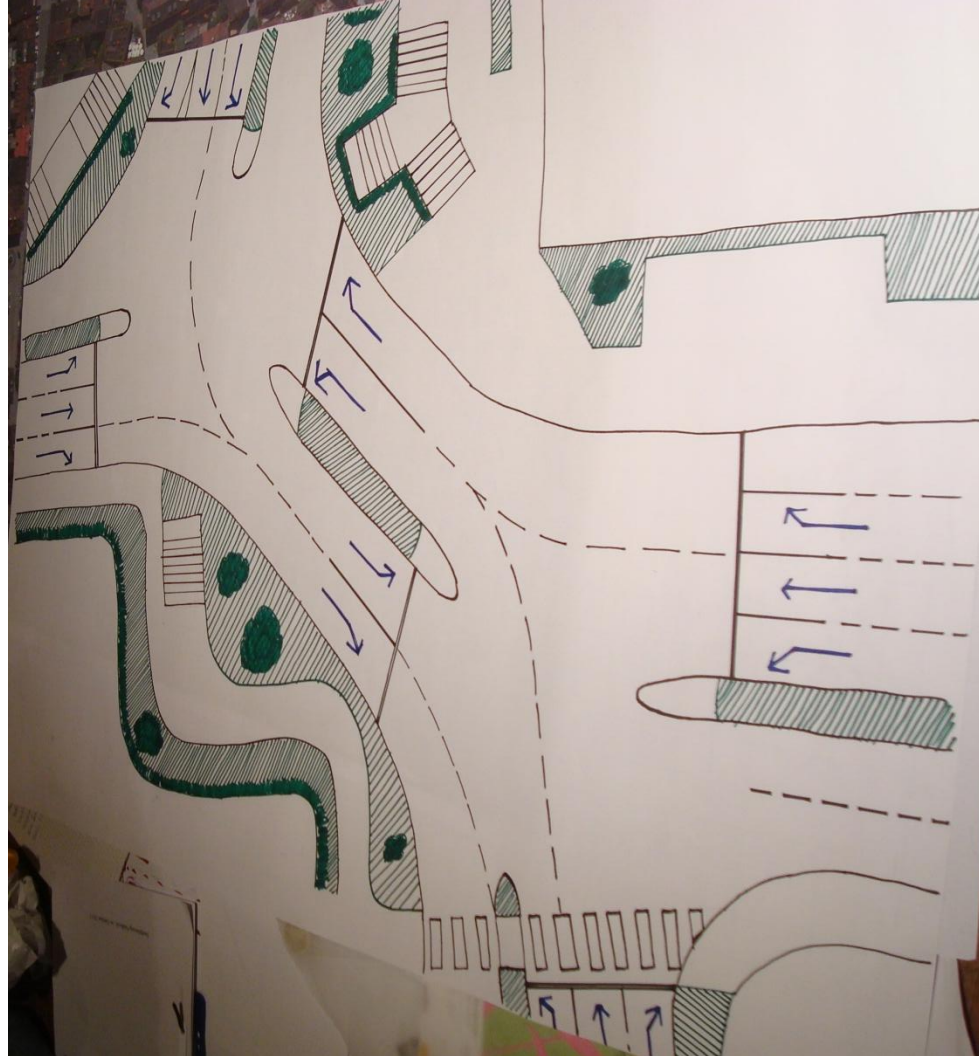


Phase 4

PHASE DISTRIBUTION (2013)



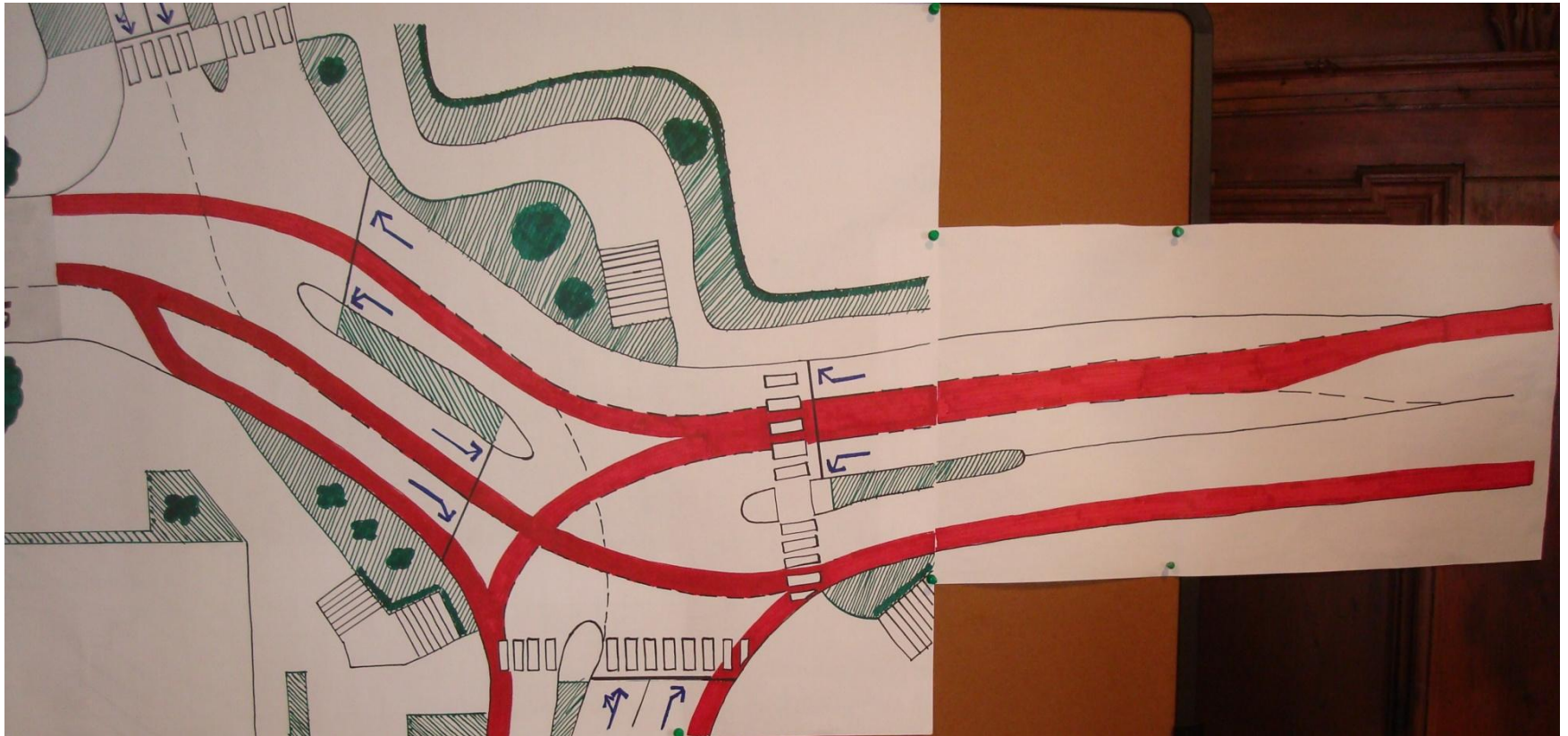
INTERSECTION – STATUS QUO (2013)



REARRANGED INTERSECTION (2025)



REARRANGED INTERSECTION (2025)



REARRANGED INTERSECTION (2025)

