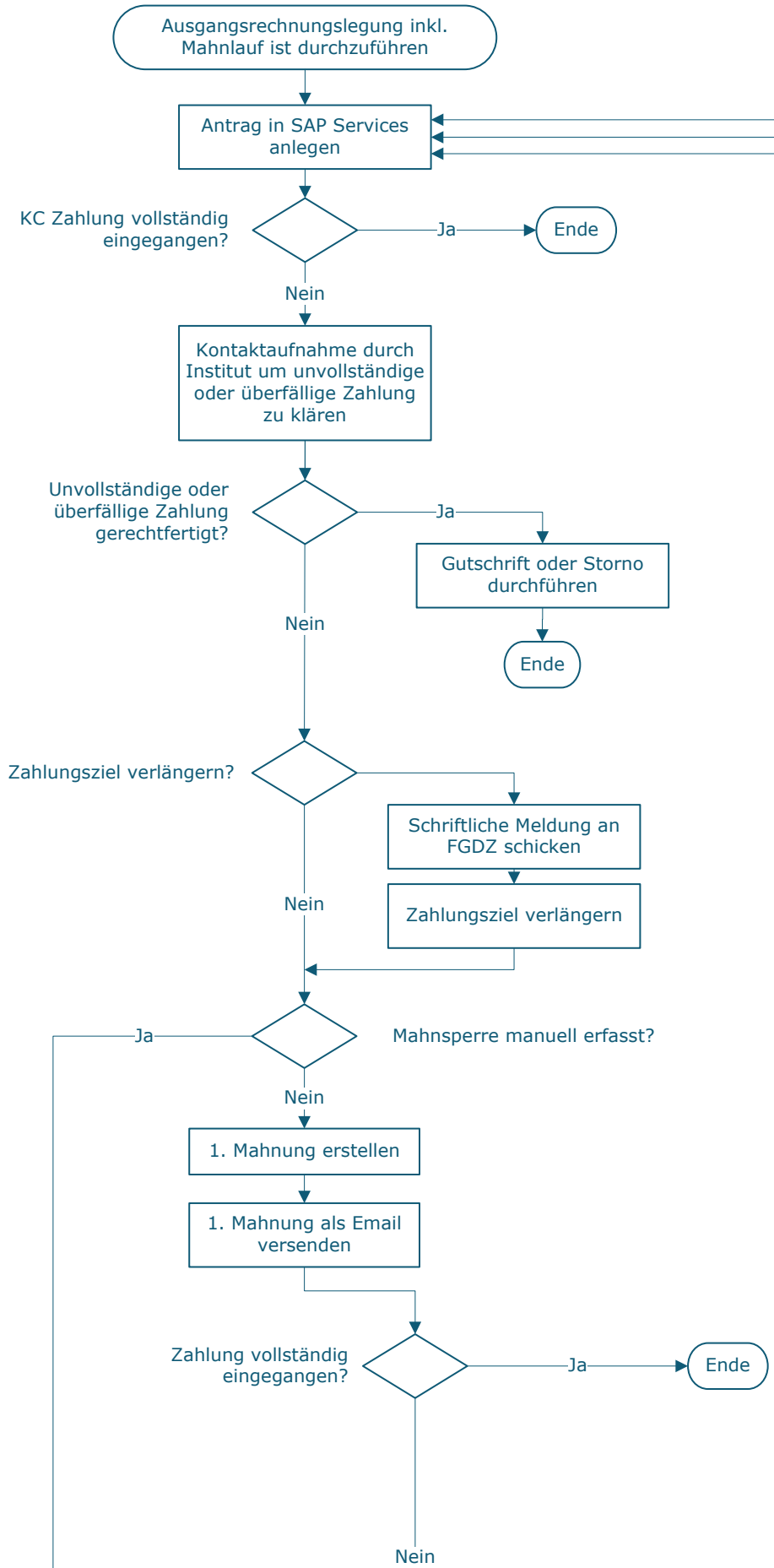
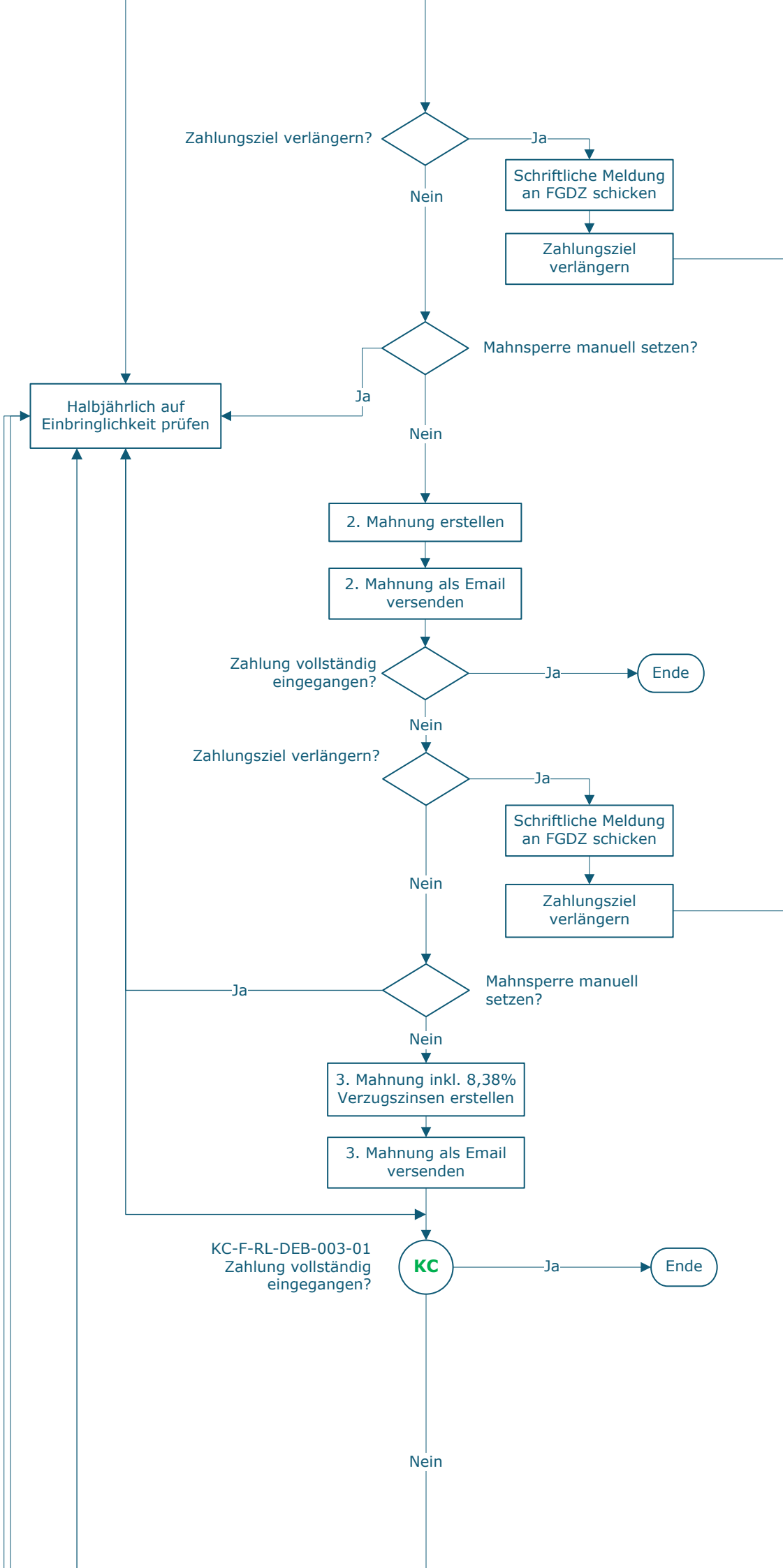


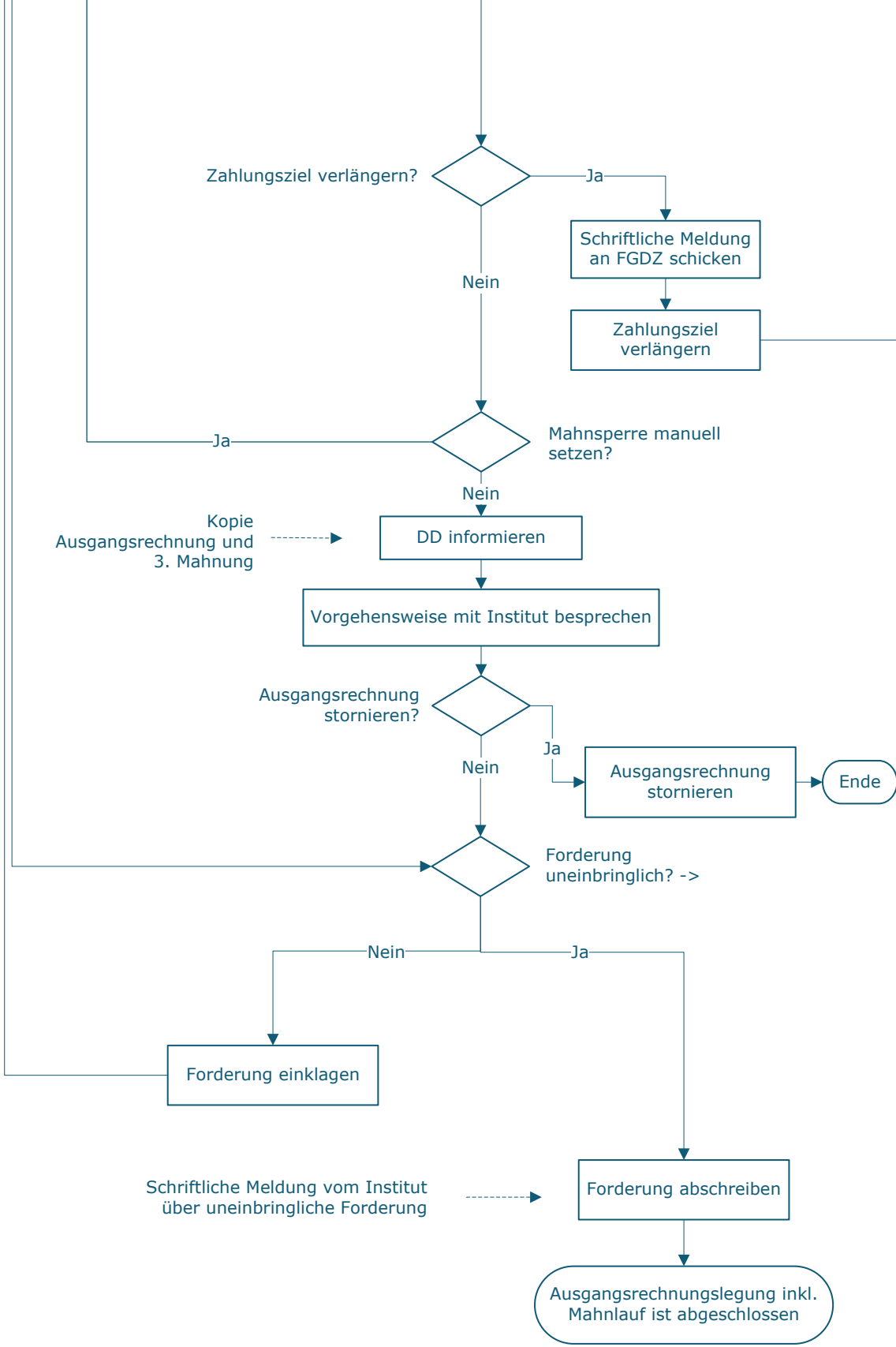
Input	Ablauf	Output	D	E	M	I
-------	--------	--------	---	---	---	---



MA	-	-	-
-	FGDZ	-	-
MA	-	-	FGDZ
-	MA	-	-
MA	-	-	FGDZ
-	MA	FGDZ	-
MA	-	-	FGDZ
FGDZ	-	-	-
-	FGDZ	SAP	-
FGDZ	-	-	-
FGDZ	-	-	-
-	FGDZ	-	-



-	MA	FGDZ	-
MA	-	-	FGDZ
FGDZ	-	-	-
-	FGDZ	SAP	-
FGDZ	-	-	-
FGDZ	-	-	-
-	FGDZ	-	-
-	MA	FGDZ	-
FGDZ	-	-	-
-	FGDZ	-	-
FGDZ	-	-	-
-	FGDZ	-	-
FGDZ	-	-	-



-	MA	FGDZ	-
FGDZ	-	-	-
-	MA	-	-
FGDZ	-	-	-
DD	-	MA	-
-	MA	-	FGDZ
MA	-	-	-
-	DD	-	FGDZ
DD	-	MA	-
FGDZ	-	MA	-

## Legende

---

D ... Durchführung  
E ... Entscheidung  
M ... Mitarbeit  
I ... Information

---

**KC** ... Key Control

---

FGDZ ... Finanzen | FAG Girokontenbetreuung, Debitorenbuchhaltung und Zahlungsverkehr  
MA ... Mitarbeiter\_in  
SAP ... SAP  
DD ... Datenschutz und Dokumentenmanagement

---

## Prozessinformation

---

*Aufgezeichnet:* E. Schmid-Müllegger  
*Prozessverantwortliche\_r:* E. Schmid  
*Freigegeben:* M. Kolassa

---

Version: v8  
Datum: 2023-06-29

---