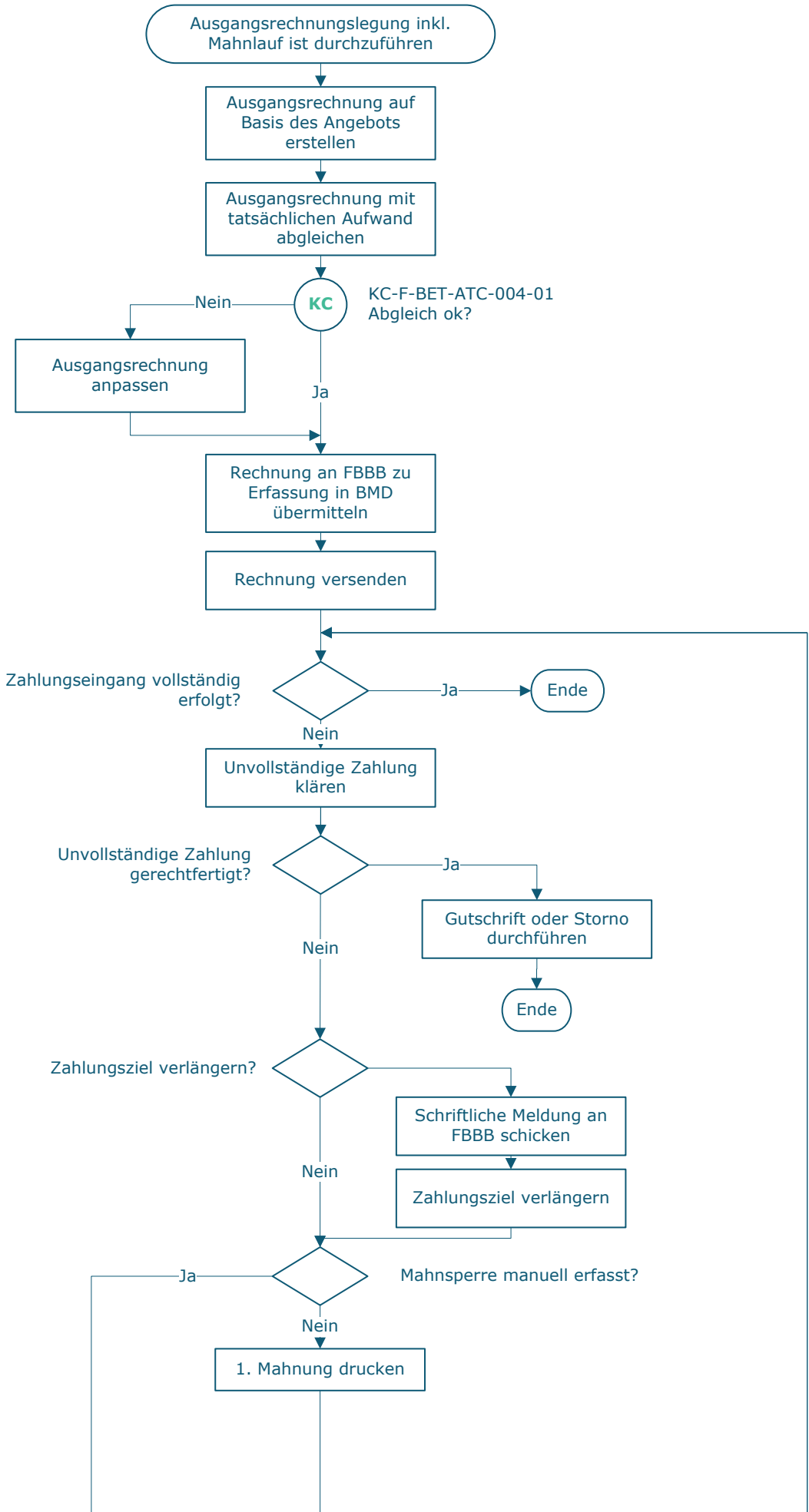
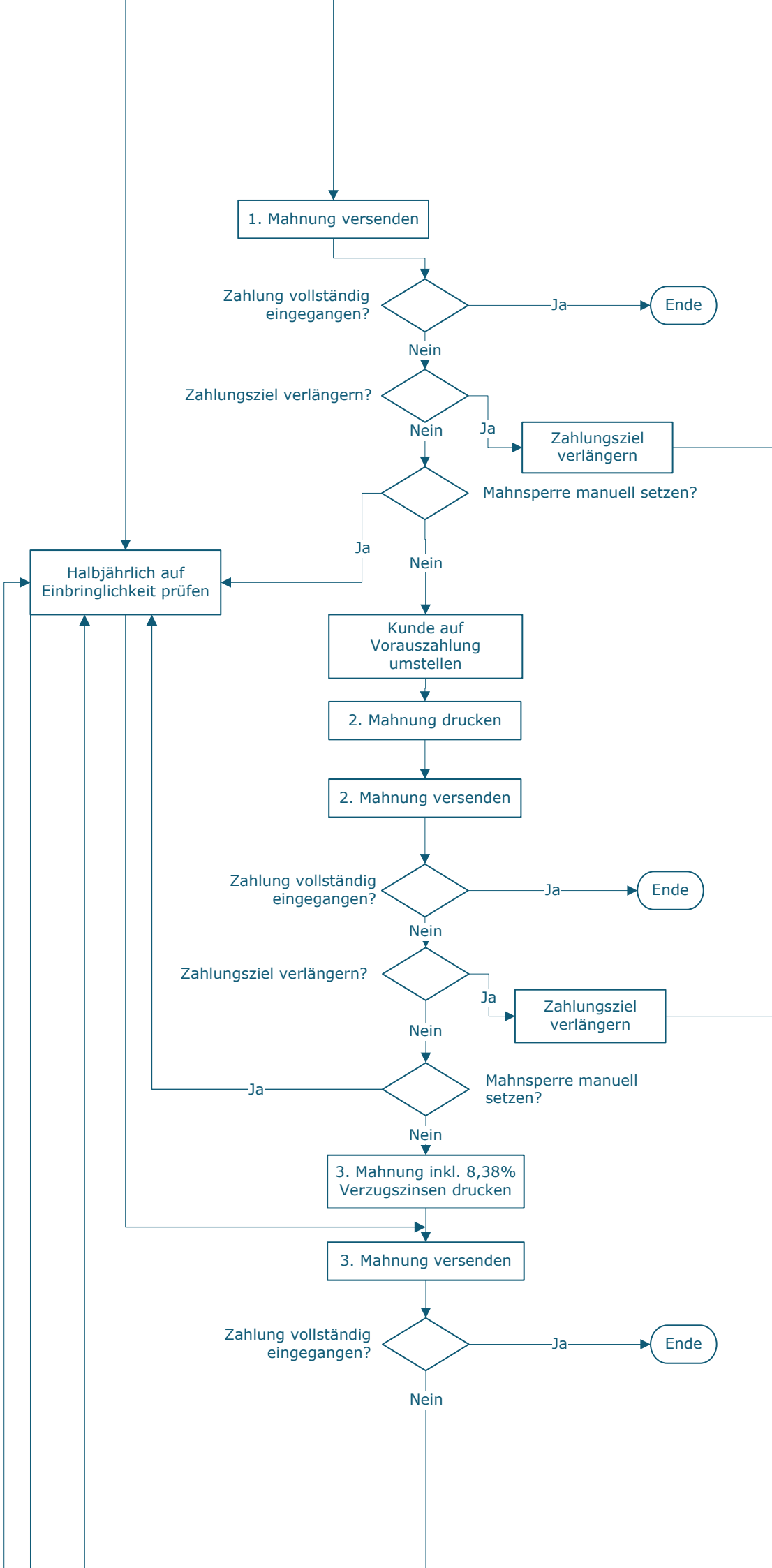


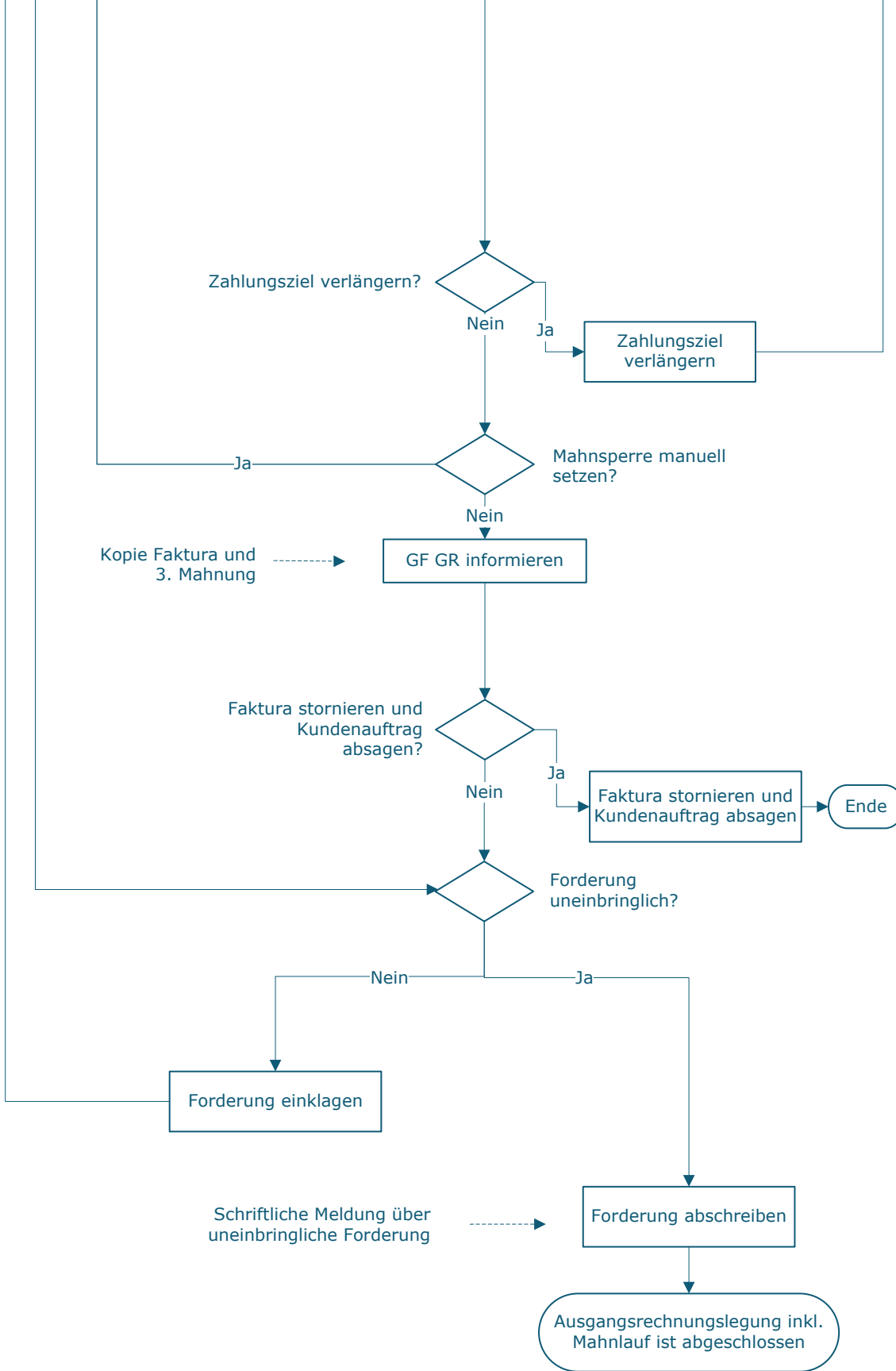
Input	Ablauf	Output	D	E	M	I
-------	--------	--------	---	---	---	---



GF HR	-	-	-
GF HR	-	-	-
-	GF HR	-	-
GF HR	-	-	-
GF HR	-	-	-
-	GF HR	-	-
GF HR GF GR	-	-	-
-	GF HR GF GR	-	FBBB
FBBB	-	-	-
-	GF HR	-	-
GF HR	-	-	FBBB
GF HR	-	-	FBBB
-	GF HR	-	-
GF HR	-	-	-



GF HR	-	-	-
-	FBBB	-	-
-	GF HR	-	-
GF HR	-	-	FBBB
-	FBBB	-	-
GF HR	-	-	-
GF HR	-	-	-
GF HR	-	-	-
-	FBBB	-	-
-	GF HR	-	-
GF HR	-	-	FBBB
-	FBBB	-	-
GF HR	-	-	-
GF HR	-	-	-
-	FBBB	-	-



-	GF HR	-	-
GF HR	-	-	FBBB
-	FBBB	-	-
GF HR	-	GF GR	-
-	GF HR GF GR	-	FBBB
GF HR GF GR	-	-	-
-	GF HR GF GR	-	-
GF HR GF GR	-	-	TUH
GF HR GF GR	-	TUH	-

Legende

D ... Durchführung
E ... Entscheidung
M ... Mitarbeit
I ... Information

KC ... Key Control

GF HR ... Geschäftsführer_in handelsrechtlich
GF GR ... Geschäftsführer_in gewerberechtlich
FBBB ... Finanzen | FAG Bilanzierung, Beteiligungsbuchhaltung und Barzahlungsverkehr
TUH ... TU Holding

Prozessinformation

Aufgezeichnet: E. Schmid-Müllegger
Prozessverantwortliche_r: M. Huber
Freigegeben: M. Kolassa

Version: v3
Datum: 2023-07-13
