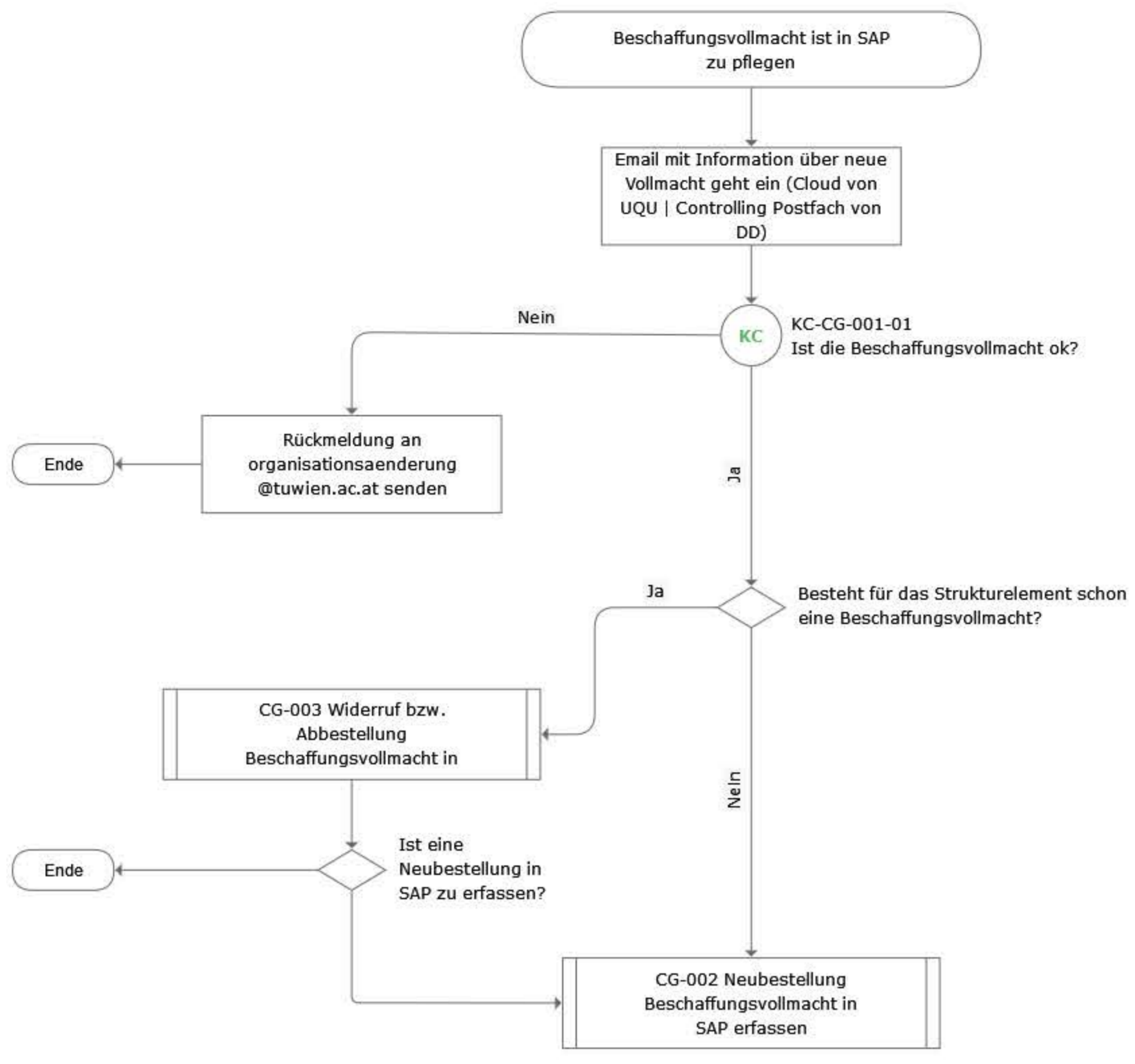


CG-001 Beschaffungsvollmacht in SAP pflegen

Input	Ablauf	Output
-------	--------	--------



	D	E	M	I
1	-	-	-	-
2	UQU	-	-	FCO
3	-	FCO	-	-
4	FCO	-	-	UQU
5	-	FCO	-	-
6	FCO	-	-	-
7	-	FCO	-	-
8	FCO	-	-	-
9	-	-	-	-
10	-	-	-	-
11	-	-	-	-

Legende

1		
2	FCO	Finanzen FAB Controlling
3	UQU	Universitätsentwicklung und Qualitätsmanagement
4	x	x
5	x	x
6	x	x
7	x	x
8	x	x
9	x	x
10	x	x