

Eternity bike

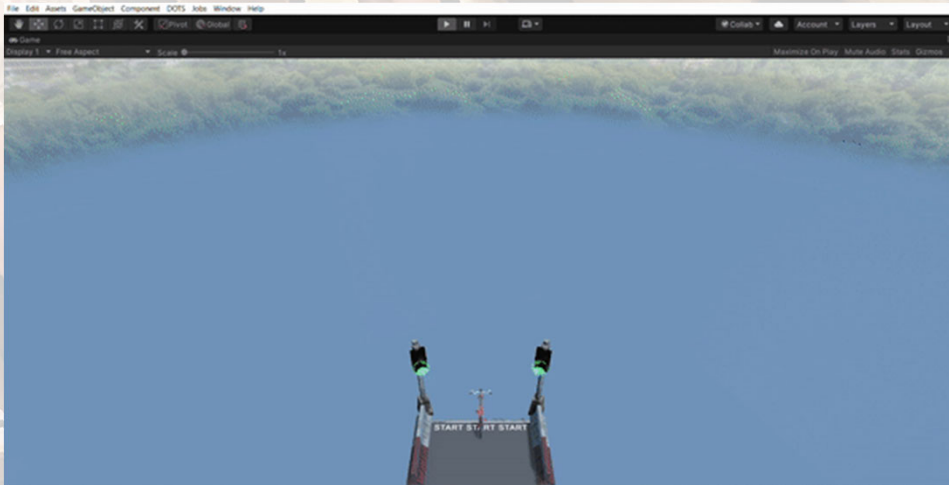
Artifact-Based Computing & User Research, TU Wien, Austria

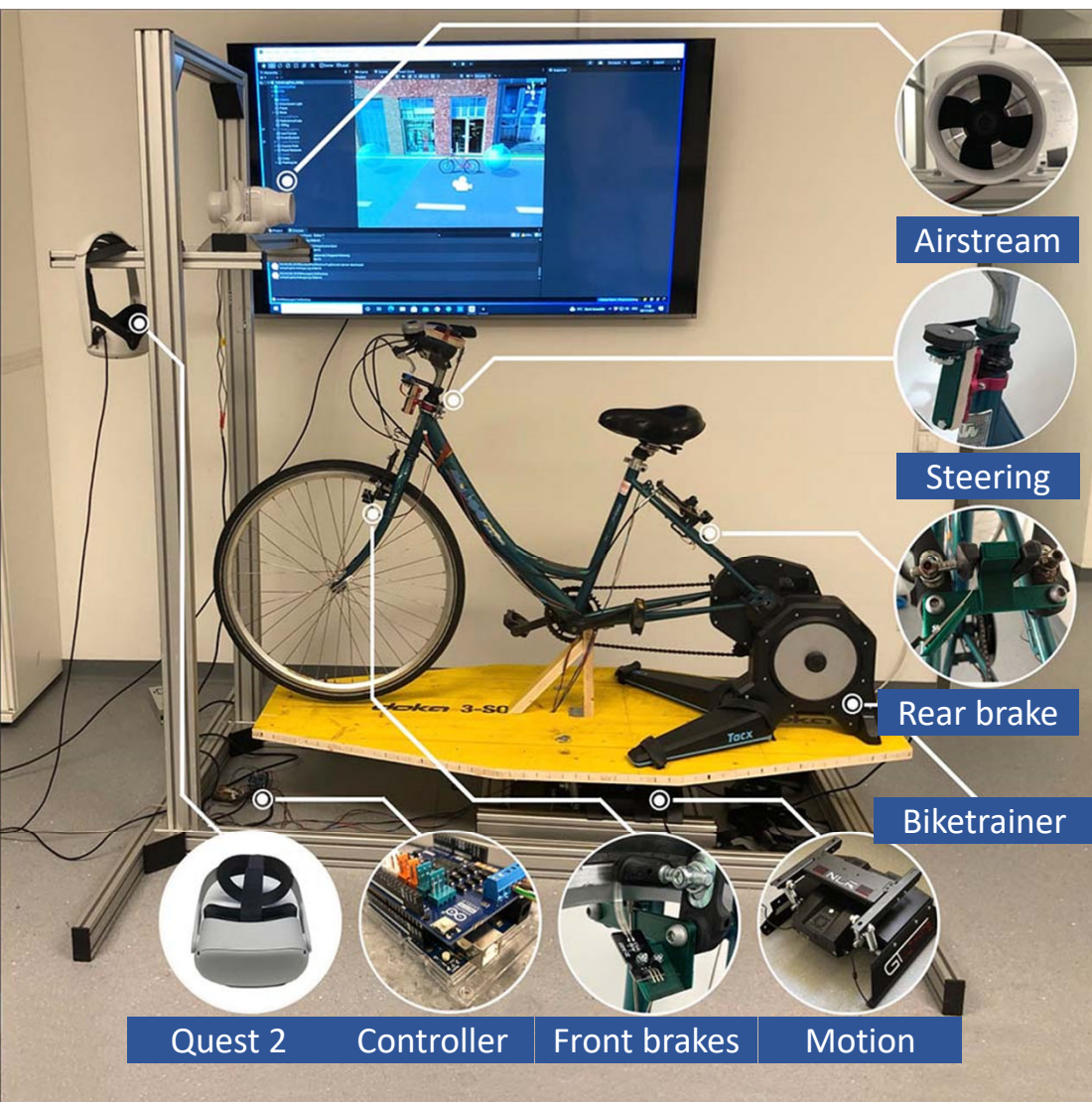
Prof. Florian Michahelles

<http://media.tuwien.ac.at>



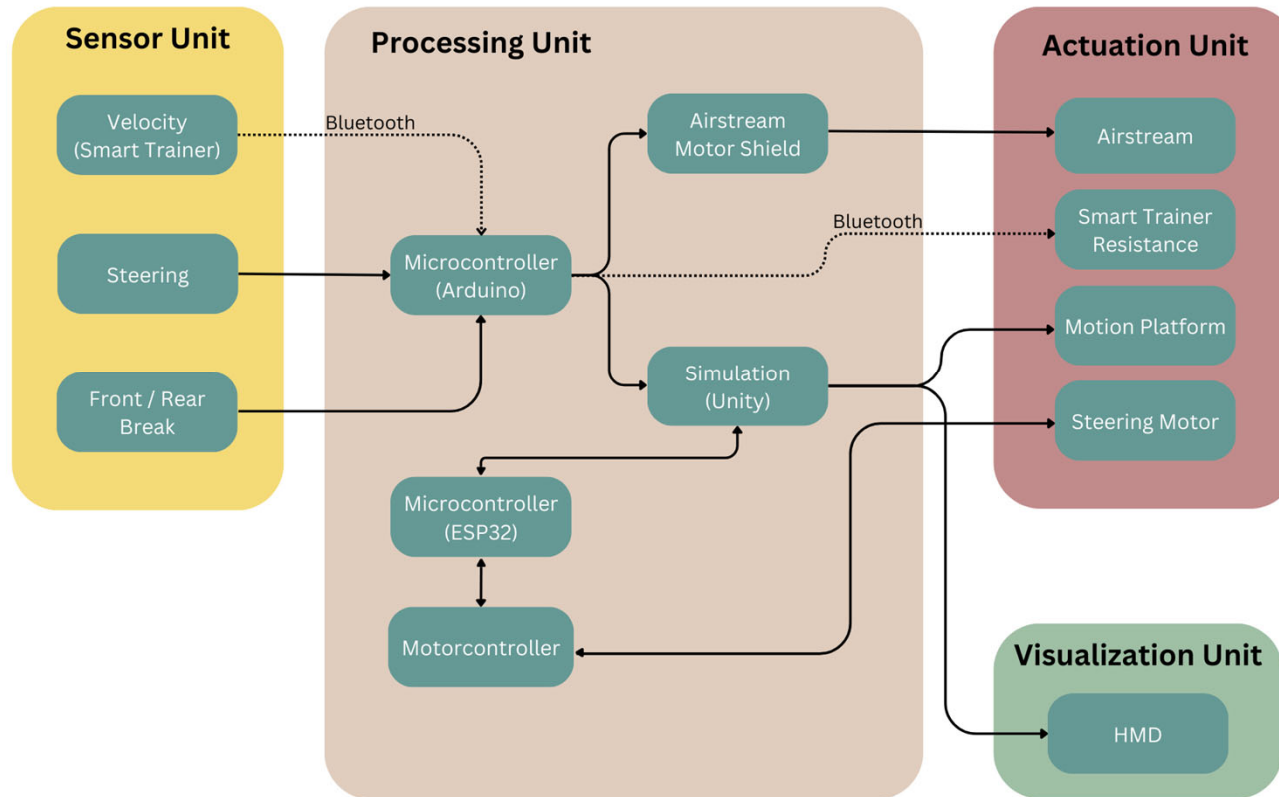
Vision self-driving bike



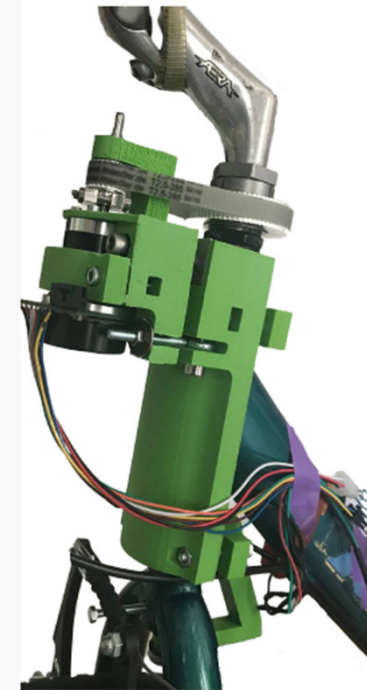


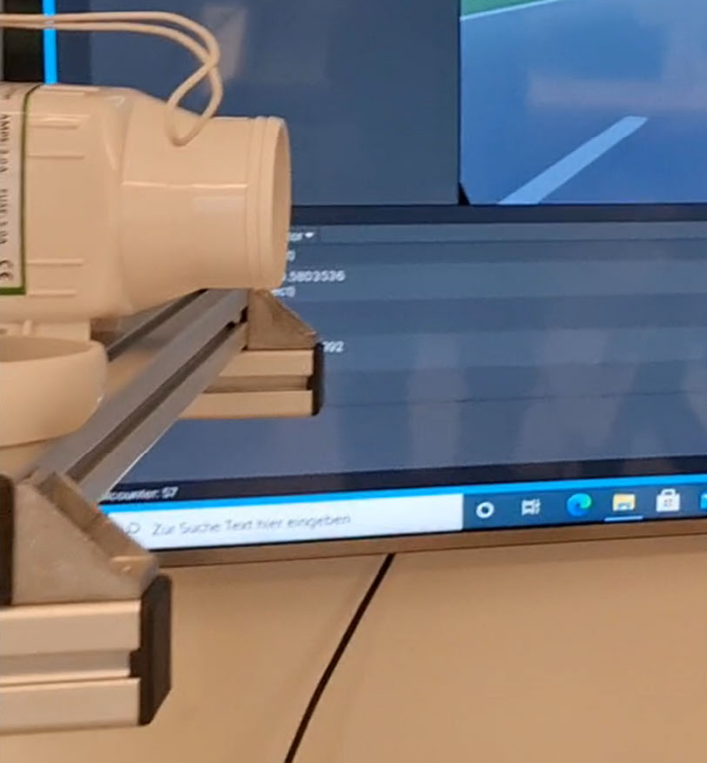
Philipp Wintersberger, Andrii Matviienko, Andreas Schweidler, and Florian Michahelles. 2022. Development and Evaluation of a Motion-based VR Bicycle Simulator. *Proc. ACM Hum.-Comput. Interact.* 6, MHCI, Article 210 (September 2022), 19 pages. <https://doi.org/10.1145/3546745>

Architecture



Integrating AI with mechanics





What it feels...

- Driver-Assistance Systems
- Autonomous Driving



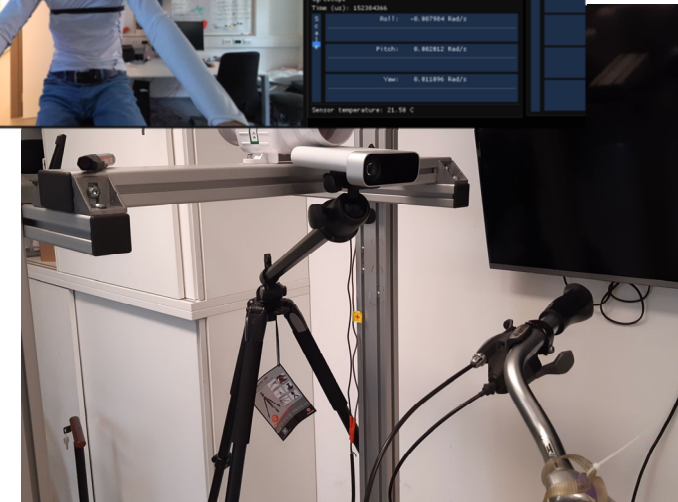
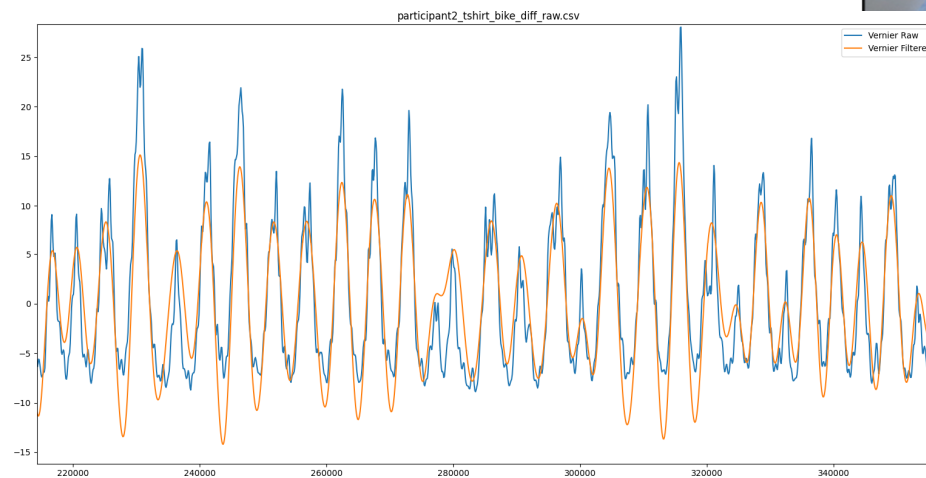
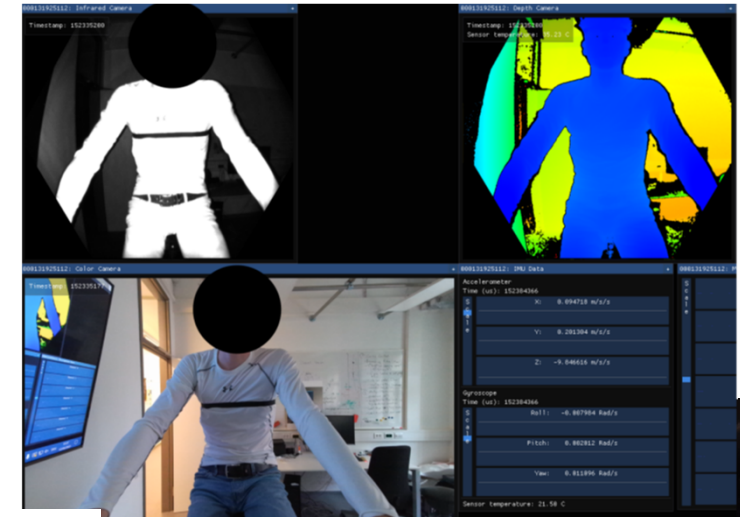
Bike Simulator

- Driver-Assistance Systems
- Autonomous Driving
- Self-Balancing

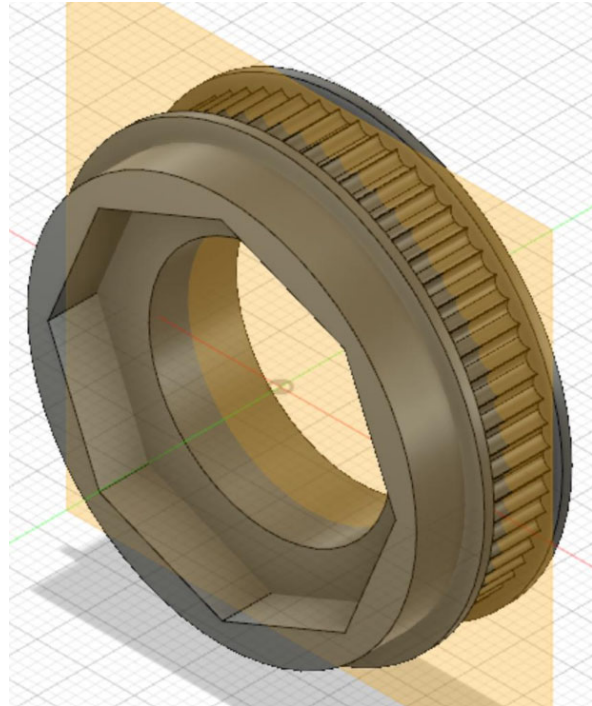


Future 1: Physiological measurements

- Driver-Assistance Systems
- Autonomous Driving
- Self-Balancing
- Shock, anxiety, and comfort



Future 2: Mechanical integration



Future 3: Citizen empowerment



Empowering citizens for designing 15mC by using simulation, VR, and AR for sharing, evaluating alternatives, and collecting feedback

Interested in joining our endeavor?

Florian Michahelles
Professor of Ubiquitous Computing

- <https://media.tuwien.ac.at/>
- <http://florian-michahelles.blogspot.com/>
- <https://informatics.tuwien.ac.at/people/florian-michahelles>

