



# TOILET FOR ME

**Our Vision: Empowering old or disabled people ...**

**... to use toilets in semi-public environments without personal assistance**

**... to leave home more often and participate more in societal life**

Design and evaluation of innovative toilet systems capable to **adapt to user needs** and offering **physical support** for transition to and from toilet (motorized height and inclination adaptation), emergency sensor for **maintaining safety**, cleaning support by **shower seat**.

Final Prototype based on existing products, mainly **LiftWC 'STV' product** from Santis or 'R2D2' chair type (<https://www.attris.de/en/>) and **cogvisAI 3D smart safety sensor** product from Cogvis (<https://cogvis.ai/>)

Passive, manual and advanced **interaction modes**

**Co-designed** manual all-in-one control

Preferred settings via RFID tag or phone app  
Estimation of user properties (e.g. body size) and user behaviour

Integration via **ICT backbone** into a modular smart system

**Shower seat**, air quality sensor for cleanliness estimation, future options: UV-C light **disinfection**, seat cleaning, **open for 3<sup>rd</sup> parties** via an **open API**



Smart safety sensor



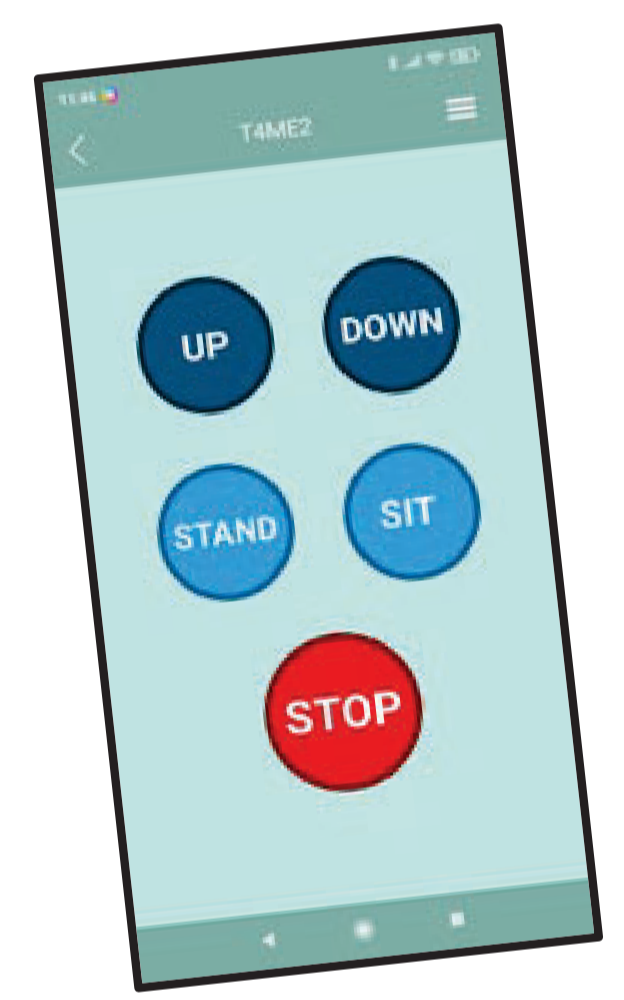
Cleanliness sensor



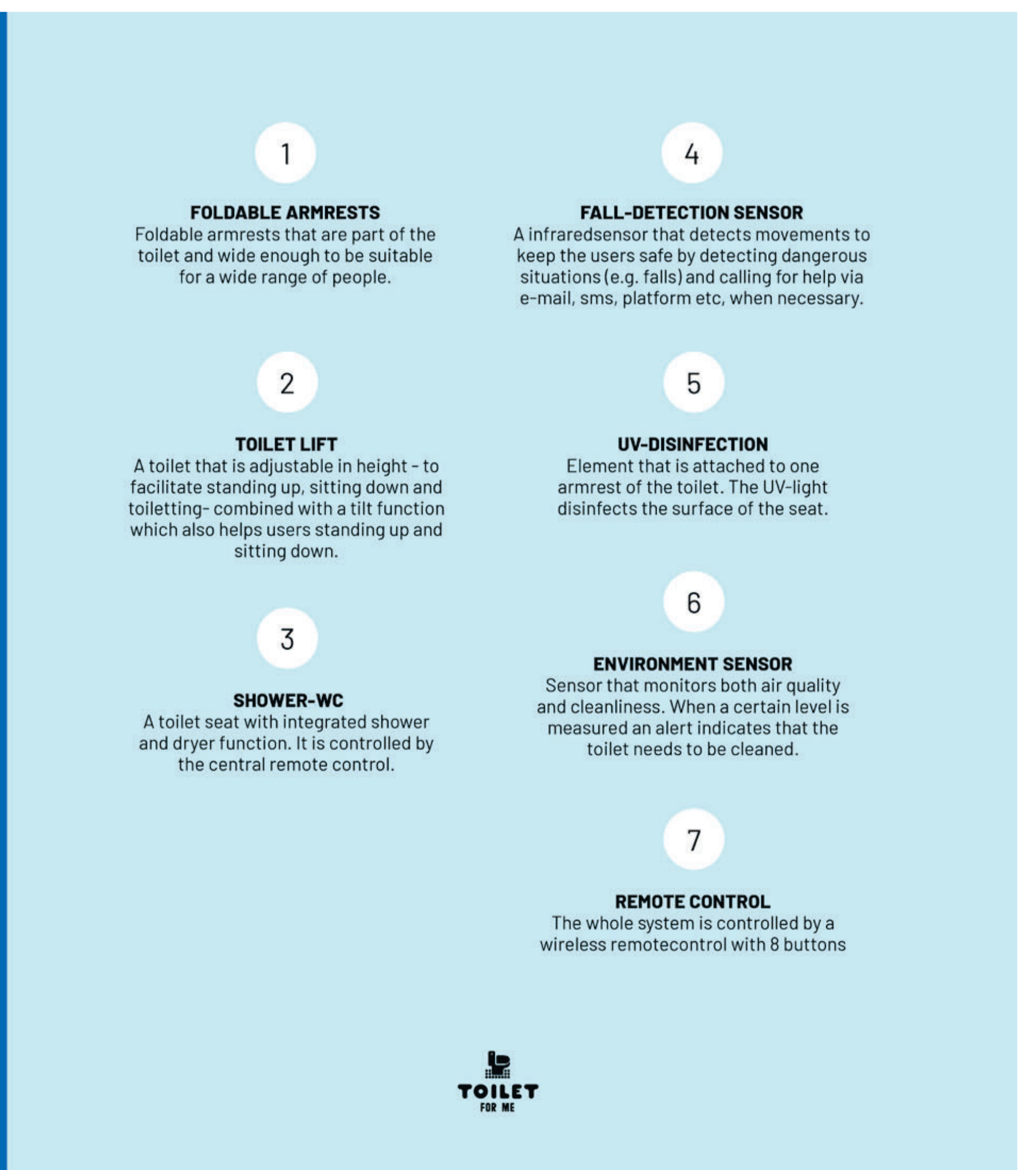
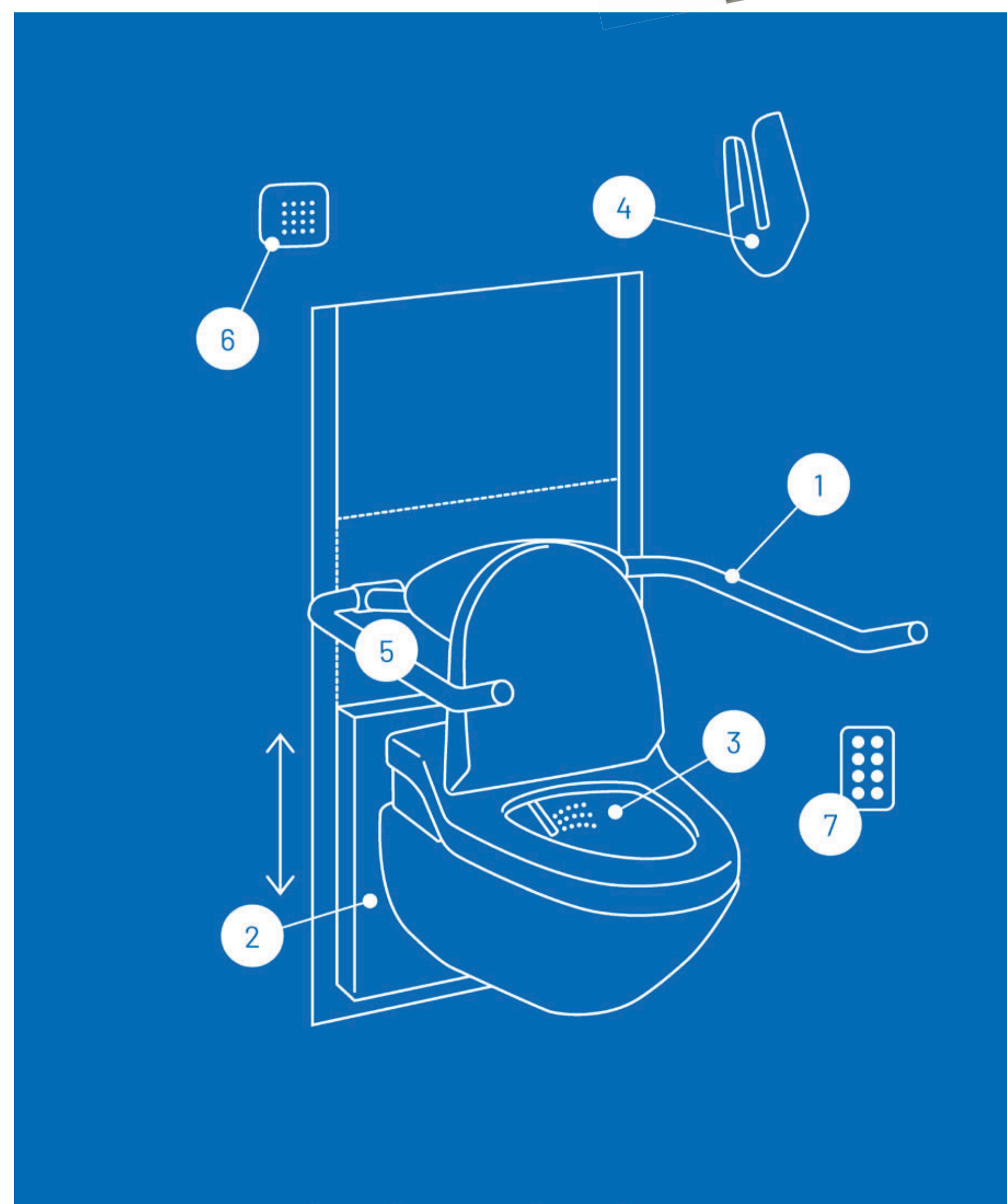
All-in-one hand control



Preferred settings on RFID tag



Smart phone app



Final Prototype for evaluation in real-life environment at test site

Web: <http://toiletforme.com/>

Business inquiries: [ms@sanmedi.nl](mailto:ms@sanmedi.nl) (Mrs. Marjolein in 't Veld)

Project partners:



T4ME2 is funded in part by AAL and national research funding agencies: