



TOP REASONS TO DO EXCHANGE STUDIES AT EURECOM



Florian Kaltenberger
Professor
florian.kaltenberger@eurecom.fr

Philippe Benassi
International Relations Manager
Philippe.benassi@eurecom.fr

KEY FACTS ABOUT EURECOM

300 Master students

75 Phd students

26 Professors

A consortium of

11 universities
and

6 companies
from

10 countries

3

**Main fields of
research and
teaching**

Data Science

Digital Security

Communication Systems

300

**Days of sun
on the
French Riviera**





Academia



Industry and institution



EURECOM is part of a brand new campus called SophiaTech and benefits from cutting-edge facilities



EUROPEAN SILICON VALLEY

EURECOM is located in the heart of SOPHIA ANTIPOLIS



2,330	companies
36,300	jobs
4,500	researchers
5,000	students
70	nationalities

One of the largest techno-parks in Europe

Some of the top companies offering internship opportunities to our Master & Post Master students:



DLR, NXP, Magnetti Marelli, PSA, KMPG, Delivery Hero Germany, Technicolor, HP, Nokia, CEA, Accenture

ITS AREAS OF EXPERTISE



DATA SCIENCE & ENGINEERING

- Machine learning, deep learning and statistical modeling
- Big Data
- Data Science & Data Mining
- Business Intelligence
- Artificial Intelligence



DIGITAL SECURITY

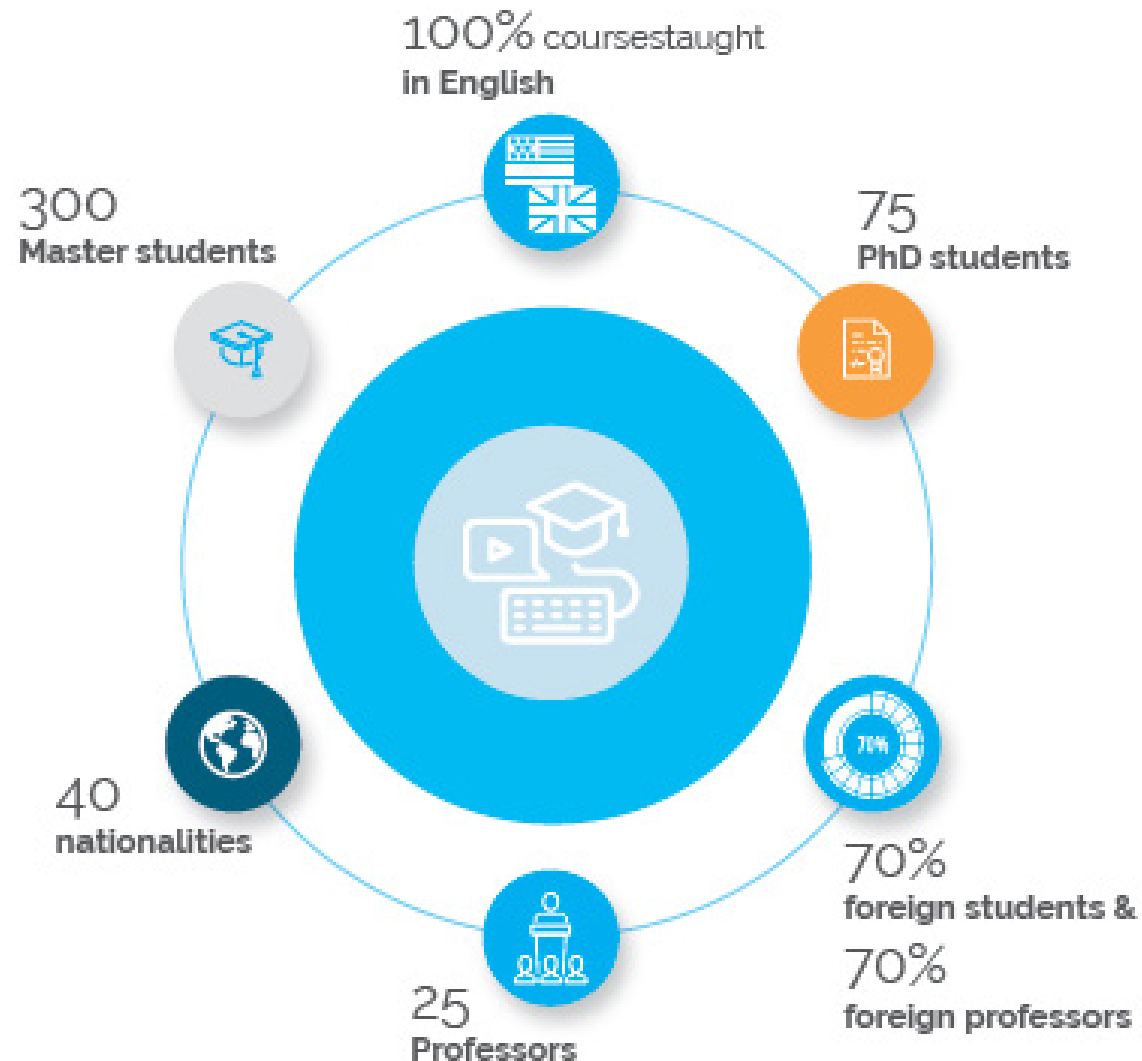
- System and Software Security
- Applied Cryptography and Security Protocols
- Biometrics and Digital Media



COMMUNICATION SYSTEMS

- Internet of Things
- 5G
- Wireless Communications
- Mobile Communications
- Mobile Networking
- Mobile Applications and Services
- Telecommunications

Diversity is not the exception: it's the norm !



**A VERY
INTERNATIONAL
SCHOOL**

STUDENT MOBILITY

October

February

June

July

December

**FALL SEMESTER
30 ECTS**

**SPRING SEMESTER
30 ECTS**

**MASTER THESIS
30 ECTS**

1 Academic Semester

1 Academic Semester

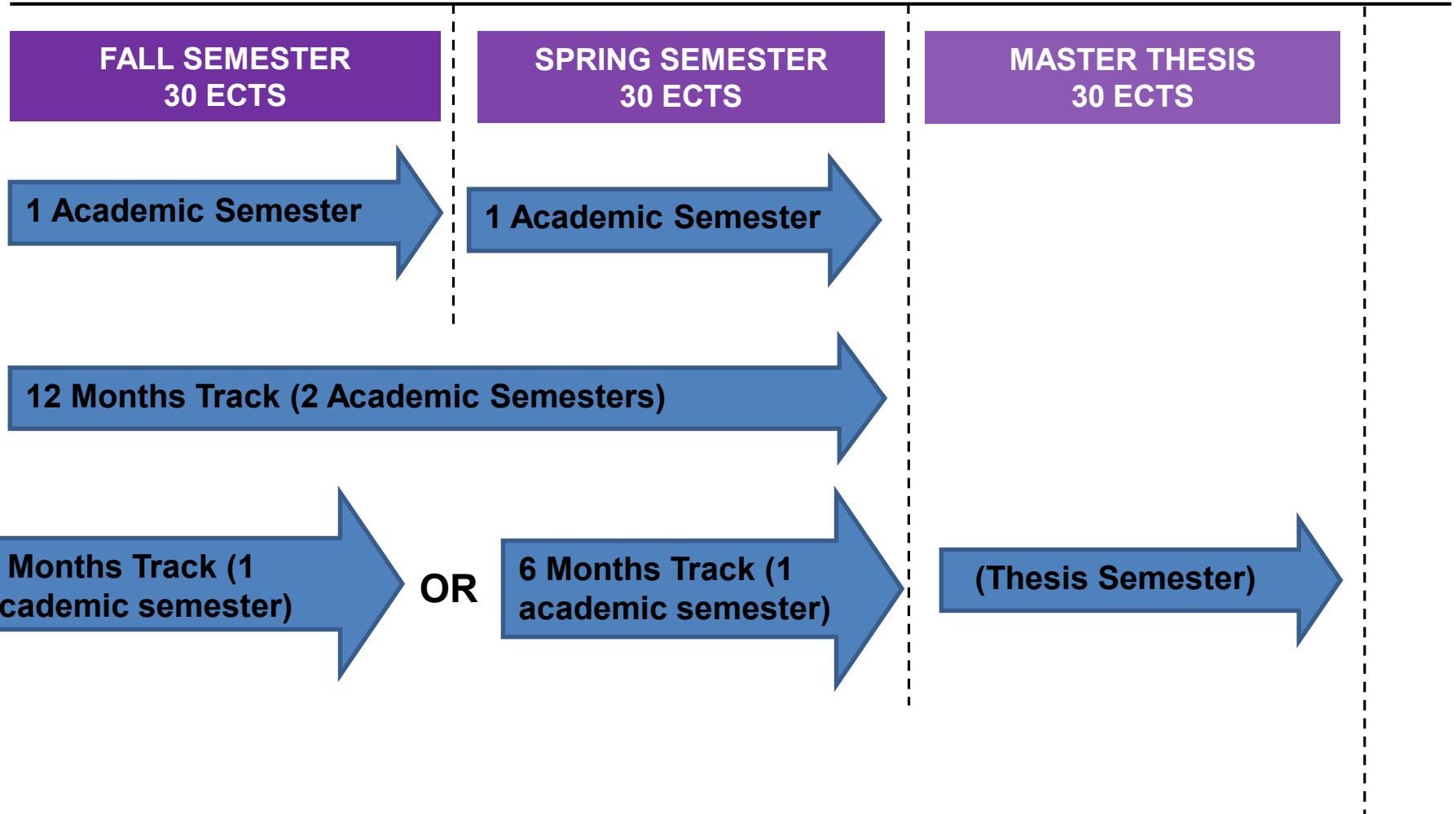
12 Months Track (2 Academic Semesters)

**6 Months Track (1
academic semester)**

OR

**6 Months Track (1
academic semester)**

(Thesis Semester)



STUDY TRACKS

Courses are organized into 5 Study Tracks with several compulsory courses and the rest being elective. More information: <http://www.eurecom.fr/en/teaching/engineering-studies/18-months-curriculum>

You pick the courses you wish among 5 study tracks

Data
Science

Digital Security

Internet of
Things

Intelligent
Communication
Systems

Embedded
Systems

FLEXIBLE CURRICULUM

EURECOM's organisation is very flexible and allow students to design their own curriculum (if approved by their home university).

The whole catalogue of courses is open to exchange students.

TECHNICAL COURSES

FALL SEMESTER (OCTOBER-JANUARY)

Technical courses		
T	ATMM	Advanced topics in multimedia
T	ATWireless	Advanced topics in wireless communications
T	Clouds	Distributed Systems and Cloud Computing
T	CompArch	Computer architecture
T	DigiCom	Digital communications
T	EmSim	Emulation and simulation methodologies
T	G_Theory	Game Theory
T	ImCompress	Image and video Compression and Processing
T	InfoTheo	Information theory
T	MALIS	Machine Learning and Intelligent System
T	MathEng	Essential Mathematical Methods for Engineers
T	MMIR	Multimedia indexing and retrieval
T	MobCom	Mobile communication techniques
T	MobMod	Mobility Modeling

NON TECHNICAL COURSES

FALL SEMESTER (OCTOBER-JANUARY)

General courses		
G	Entrep	Entrepreneurship and Capital-Venture
G	GreenIT	Sustainable ICT's
G	Innov	Innovation & new product development
G	ManagIntro	Introduction to management
G	Property	Intellectual property law
G	TeamLead	Personal Development and Team Leadership

CONTENT OF THE CURRICULUM

Technical Courses

- Innovative courses, designed in partnership with EURECOM's academic and industrial members.
- Regularly assessed and updated.

Non Technical Courses

- 1/3 of the curriculum. « **Soft skills** » MBA type classes taught by experts from companies or professors from renowned business schools in Law, Management, Business simulation...

Semester Project

- Blend of theoretical and practical work under the supervision of a professor, often involves the building of a prototype. In teams of 2/3 students. (Around 90-100h per semester)

Foreign Languages

- Any foreign language can be taught provided there are 5 students min. with a similar level.

Master's Thesis

- Thesis on an industrial or research subject carried out in a company or a lab during 6 months. EURECOM maintains an updated database.
- Students are paid and integrated as part of the company' staff.

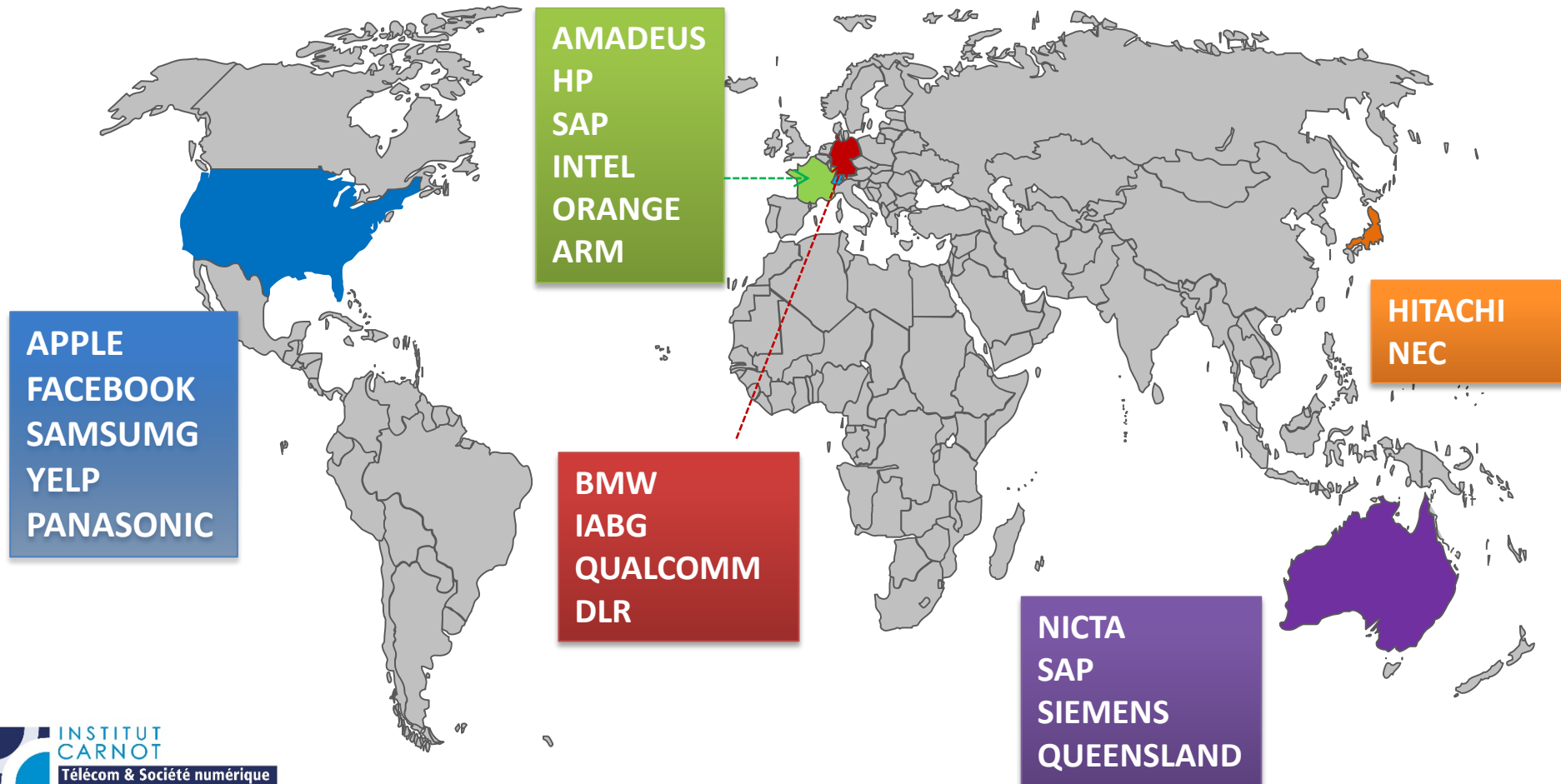
HANDS-ON APPROACH

- **Balanced approach between theoretical input and practical application (Labs, Challenges..)**
- **Guest Speakers from the Industry**
- **Semester long projects on relevant industrial topics**
- **Visits in nearby companies and introduction to new technologies**



MASTER THESIS OPPORTUNITIES

EURECOM provides students with a database of Master's thesis opportunities in labs and companies in France and abroad.



INDIVIDUAL ASSISTANCE

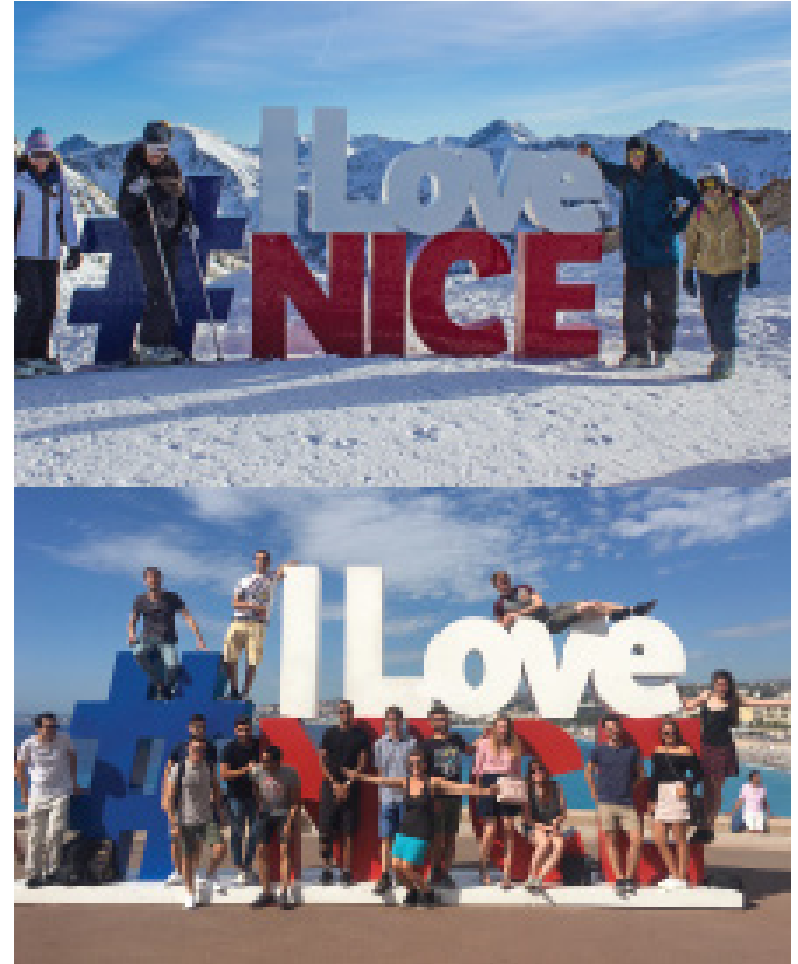
- **Human-size school: Accessible professors and staff**
- **Favorable professor/students ratio**
- **A whole team dedicated to student's administrative life**
 - Administrative assistance: Health insurance, housing, bank account...
 - Help to find a flat and an internship



EURECOM
Student Affairs Team

LANGUAGE AND CULTURAL TRAINING

- A 3-week Intensive program of French language and cultural visits organized in September
- Included in the program (Free of charge for Exchange Students)
- Weekly French courses throughout the academic year



STUDENT ACTIVITIES

EURECOM has a very active Student's association organises many events all year long to fully enjoy your stay in France.



Weekend of Integration



International Meal



International Study trip



Ski Weekend



Many sport activities



Graduation and Alumni Events

AN UNPARALLELED LOCATION

EURECOM's localization allows our students to enjoy culture, sports and discovery.



60 km from Italy



**Gateway to main European
Cities with low cost flights**

Fine Arts

**Like the cinema ?
Enjoy the Festival de Cannes**

CONTACT DETAILS

Admin Coordinator :
Philippe Benassi
philippe.benassi@eurecom.fr



Academic Coordinator :
Florian Kaltenberger
florian.kaltenberger@eurecom.fr



DEADLINES FOR APPLICATION :

For Fall intake (September 2022):

29 May 2022

For Spring intake (February 2022):

30 November 2021

www.eurecom.fr/en